



Wymering Road, W9

£877 Per week

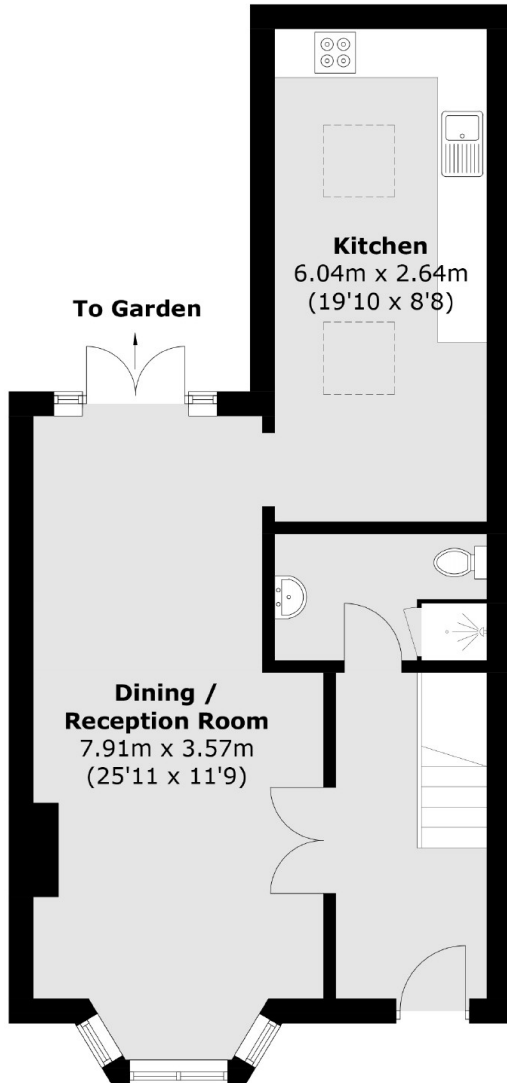
Finished to a high standard throughout, this three bedroom family house has a large living area leading to a rear private garden, three bedrooms and a stylish bathroom suite and well as downstairs cloakroom.

Wymering Road is ideally located in the heart of Maida Vale just off Elgin Avenue providing fantastic access for the vast opening space of Paddington rec as well as a number of local shops and cafes.

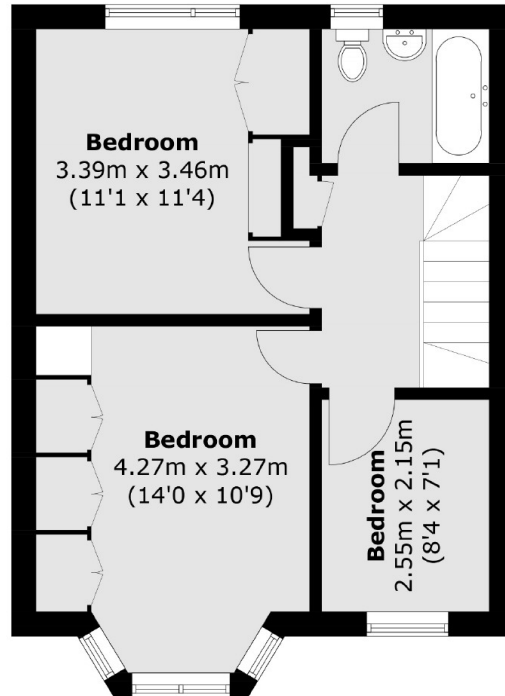
Features

- Terraced House
- Three Bedroom
- Spacious Living Room
- Separate Kitchen
- Downstairs W/C
- Private Garden

Wymering Road, Maida Vale, W9



Ground Floor



First Floor

Total area (approx.): 94.7 sq. m (1,019.3 sq. ft)