

# Birchview Vicarage Lane

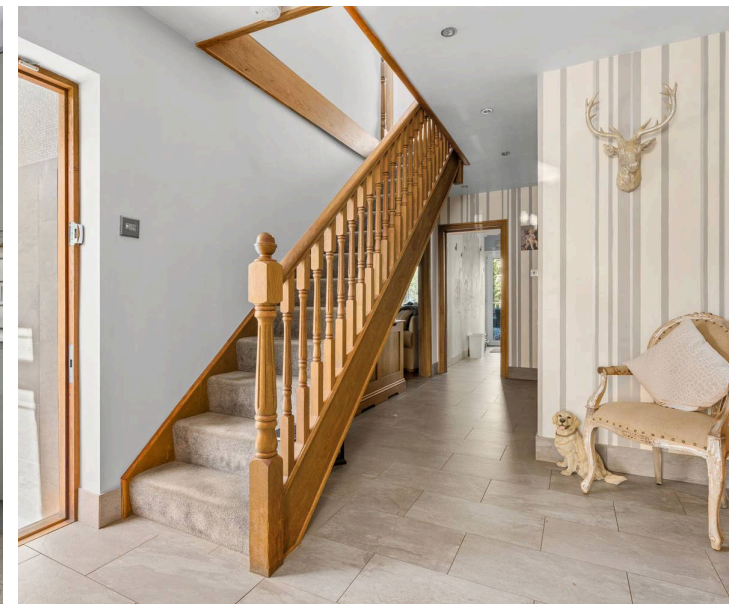
North Weald, Epping

Welcome to Birch View. A superb three double bedroom chalet bungalow in the much-loved village of North Weald. Filled with versatility, a spacious gated driveway and beautiful garden, this home is one not to miss.

Council Tax band: E

Tenure: Freehold

- Three double bedroom chalet bungalow
- Gated gravelled driveway
- Beautiful private garden
- Two bathrooms
- Short drive to M11
- Short drive to nearby towns of Epping & Harlow



**Hallway**

**Living Room**

11' 5" x 24' 5" (3.49m x 7.45m)

**Kitchen**

11' 3" x 10' 6" (3.43m x 3.19m)

**Dining Room**

14' 2" x 8' 7" (4.33m x 2.61m)

**Storage / Garage**

10' 7" x 18' 1" (3.23m x 5.52m)

**Bedroom**

12' 2" x 10' 5" (3.71m x 3.18m)

**Bathroom**

**Bedroom**

9' 5" x 18' 7" (2.88m x 5.67m)

**Bedroom**

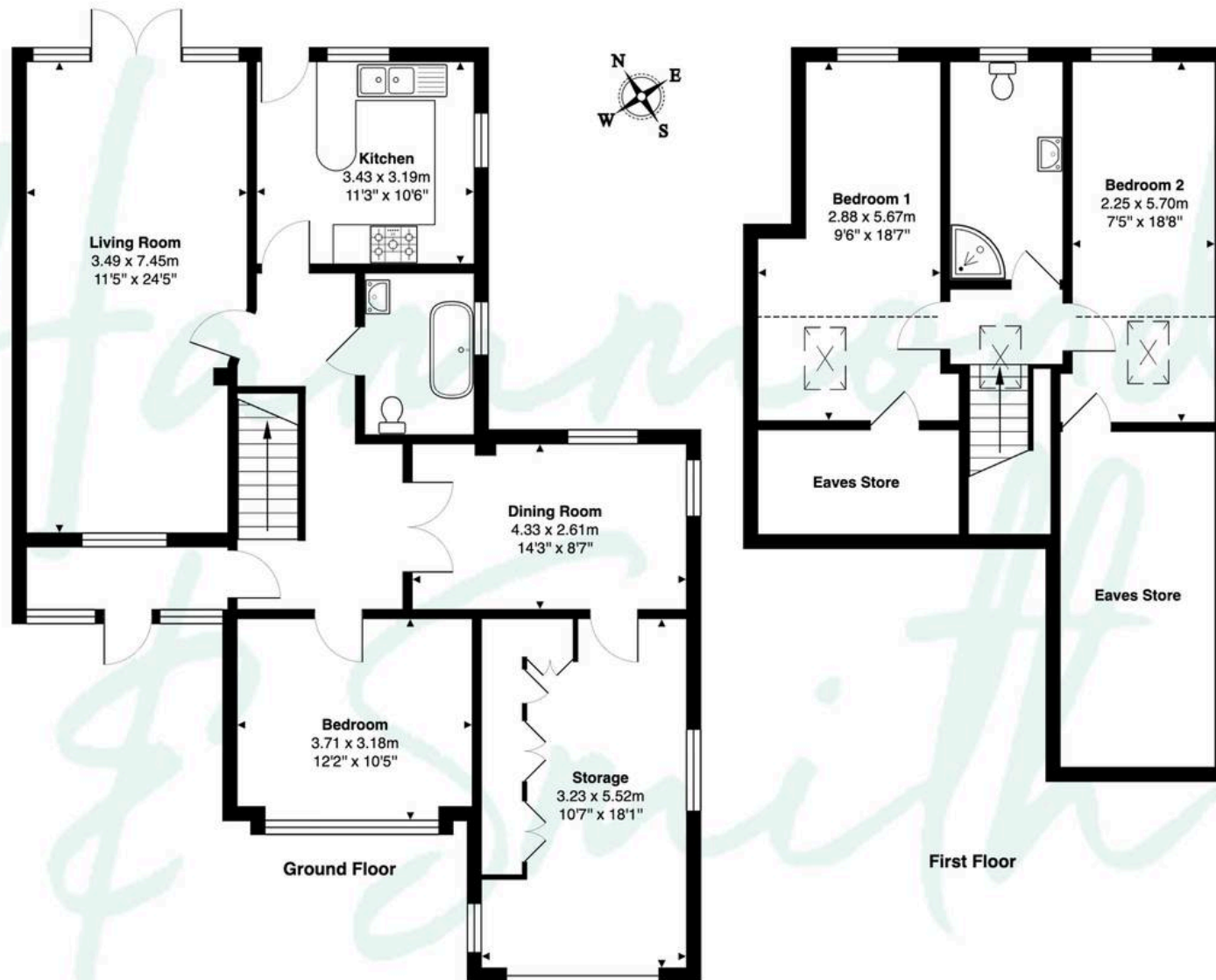
7' 5" x 18' 8" (2.25m x 5.70m)

**Shower Room**





Birchview Vicarage Lane North Weald, Epping, CM16 6ET



Total Area: 142.5 m<sup>2</sup> ... 1534 ft<sup>2</sup> (Excluding Eaves Stores)

This floor plan is for illustrative purposes only and is not to scale.  
Measurements are approximate and intended as a guide. All details should be verified independently.