



HARFORD STREET, STEPNEY GREEN, E1

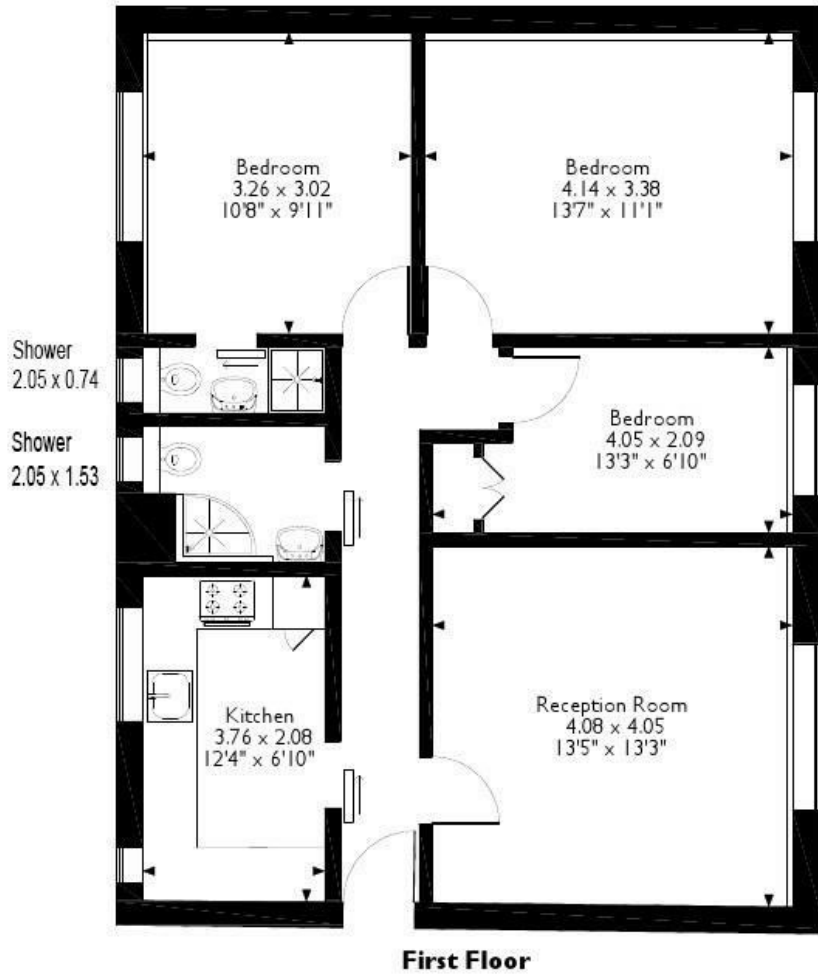
£3,000 PER MONTH

- HMO Licence - Suitable for Sharers
- Central East London Location
- Three Double Bedrooms
- Two Bathrooms

wj.
meade

Harford Street

Approximate Gross Internal Area 72 sq m/770 sq ft



Please note that the location of doors, windows and other items are approximate and this floorplan is to be used for illustrative purposes only. Unauthorized reproduction is prohibited.



W J Meade are pleased to present this three bedroom property to rent on Harford Street, E1. Situated in the middle of both Mile End & Stepney Green tube stations (5 minutes walk to both), this property is perfect for those working in the City or Central London, and as it has a HMO licence, it is available for sharers to occupy. Comprising three double bedrooms, two bathrooms (one of which is en-suite), modern kitchen and spacious lounge.

Deposit is 5 week's rent.

Council Tax Band B.

Service charge £n/a

Ground rent £n/a

Reserve fund £n/a

n/a years lease

Council tax band B

Current EPC Rating 73

Tenure:



All sizes are approximate. The Agent has not tested any apparatus, equipment, fixtures and fittings, or services and so cannot verify that they are in working order or fit for the purpose. A buyer is advised to obtain verification from their Solicitors or Surveyor. Photographs are for illustration purposes only and may depict items, which are not for sale or included in the sale price. References to tenure of a property are based upon information supplied by the vendor. The agent has not had sight of the title documents, a buyer is advised to obtain verification from their solicitor. Money Laundering Regulations 2003: Intending purchasers will be asked to produce identification, documentation at a later stage and we would ask for your co-operation in order that there will be no delay in agreeing the sale.

These particulars are intended to give a fair description of the property only and are in no way guaranteed, nor do of any contract. They are issued on the express condition that all negotiations are conducted through W.J. Meade Estate Agents. All subject to contract and to being unsold.