



Honeysuckle Close, Sutton-On-Sea Mablethorpe LN12 2ST

welcome to

Honeysuckle Close, Sutton-On-Sea Mablethorpe

A well-proportioned 3-bed detached bungalow located in the sought-after coastal village of Sutton-on-Sea. Offering comfortable single-storey living with an entrance hallway with storage, lounge, kitchen, conservatory, bathroom, separate WC, driveway, garage, shed, and gardens.

Entrance Hallway

With storage cupboard and leads to all other rooms.

Lounge

15' 4" into bay x 12' 2" (4.67m into bay x 3.71m)
With bay window to front elevation and radiator.

Kitchen

12' 1" x 10' 1" (3.68m x 3.07m)
Wall, base and drawer units with worktop space over, sink & drainer, appliance space, window to front elevation and door leading to conservatory.

Conservatory

11' 1" x 8' 9" (3.38m x 2.67m)
With windows to three elevations and door leading into garden.

Separate Wc

Toilet, hand basin and window to side elevation.

Bathroom

With bath, toilet, sink and window to side elevation.

Bedroom 1

14' x 10' (4.27m x 3.05m)
With window to rear elevation and radiator.

Bedroom 2

11' 8" x 8' 10" (3.56m x 2.69m)
Window to rear elevation and radiator.

Bedroom 3

8' 7" x 6' 11" (2.62m x 2.11m)
With window to rear elevation and radiator.

External

With driveway to the front of property and small garden. The rear garden is mainly laid to lawn with

patio area.

Shed

17' 10" x 5' 10" (5.44m x 1.78m)

Garage

17' x 9' 5" (5.18m x 2.87m)

Local Area

Sutton-on-Sea is a charming seaside village on the Lincolnshire coast, known for its relaxed atmosphere, sandy beaches, and attractive promenade. The village offers a range of local amenities including shops, cafés, pubs, a supermarket, doctors' surgery, and primary school. The seafront and promenade are within easy reach, providing beautiful coastal walks and a traditional seaside environment. Nearby towns such as Mablethorpe and Alford offer additional amenities, while the popular seaside resort of Skegness is within comfortable driving distance, providing further shopping, leisure, and transport links.





view this property online williamhbrown.co.uk/Property/SKG110274



welcome to

Honeysuckle Close, Sutton-On-Sea Mablethorpe

- Detached bungalow
- Three bedrooms
- Spacious lounge
- Kitchen with access to conservatory
- Conservatory overlooking the garden

Tenure: Freehold EPC Rating: C

Council Tax Band: C

£290,000

Honeysuckle Close, Sutton-on-Sea, Mablethorpe, LN12

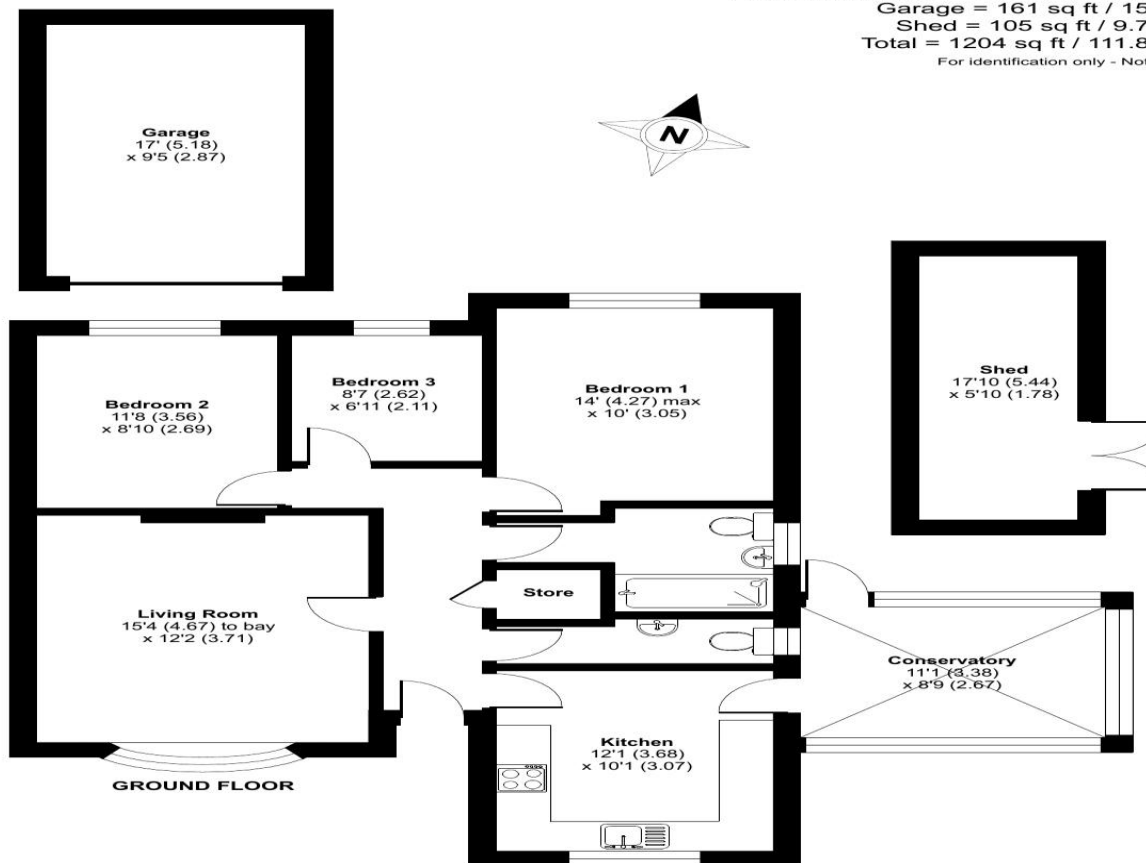
Approximate Area = 938 sq ft / 87.1 sq m

Garage = 161 sq ft / 15 sq m

Shed = 105 sq ft / 9.7 sq m

Total = 1204 sq ft / 111.8 sq m

For identification only - Not to scale



Floor plan produced in accordance with RICS Property Measurement 2nd Edition, incorporating International Property Measurement Standards (IPMS2 Residential). © nichecom 2026. Produced for Flyp Homes Limited. REF: 1430258

view this property online williamhbrown.co.uk/Property/SKG110274



Property Ref:
SKG110274 - 0002

1. MONEY LAUNDERING REGULATIONS Intending purchasers will be asked to produce identification documentation at a later stage and we would ask for your co-operation in order that there is no delay in agreeing the sale. 2. These particulars do not constitute part or all of an offer or contract. 3. The measurements indicated are supplied for guidance only and as such must be considered incorrect. Potential buyers are advised to recheck measurements before committing to any expense. 4. We have not tested any apparatus, equipment, fixtures or services and it is in the buyers interest to check the working condition of any appliances. 5. Where an EPC, or a Home Report (Scotland only) is held for this property, it is available for inspection at the branch by appointment. If you require a printed version of a Home Report, you will need to pay a reasonable production charge reflecting printing and other costs. 6. We are not able to offer an opinion either written or verbal on the content of these reports and this must be obtained from your legal representative. 7. Whilst we take care in preparing these reports, a buyer should ensure that his/her legal representative confirms as soon as possible all matters relating to title including the extent and boundaries of the property and other important matters before exchange of contracts.

William H Brown is a trading name of Sequence (UK) Limited which is registered in England and Wales under company number 4268443, Registered Office is Cumbria House, 16-20 Hockliffe Street, Leighton Buzzard, Bedfordshire, LU7 1GN. VAT Registration Number is 500 2481 05.


william h brown



01754 768311



Skegnness@williamhbrown.co.uk



20 Roman Bank, SKEGNESS, Lincolnshire, PE25
2RU



williamhbrown.co.uk