



Horselydown Lane, SE1

£3,200 Per month



- Two Bedroom Apartment
- Two Bathrooms
- Fitted Wardrobes

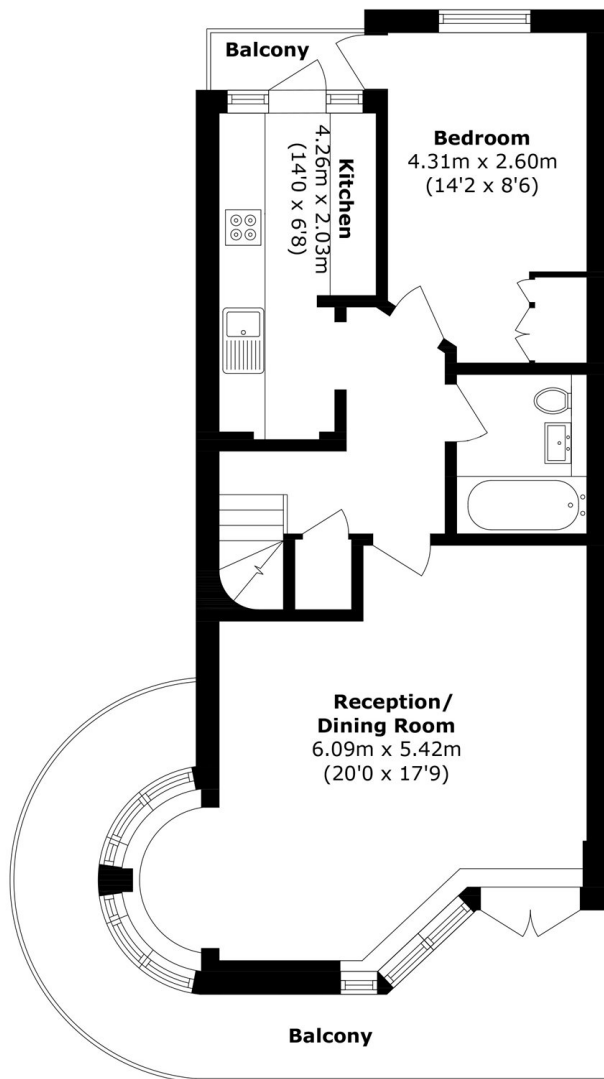
- Balcony
- Concierge
- Tower Bridge



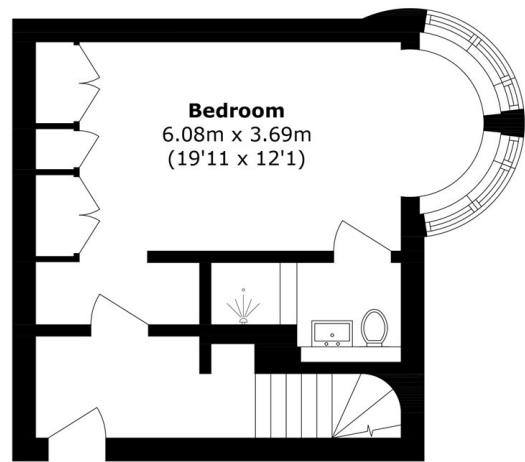
Spacious two bedroom split level apartment located within this popular Shad Thames development with concierge near Tower Bridge. This stylish apartment offers a bright reception with a balcony, two good sized double bedrooms with fitted wardrobes, and two modern bathrooms.

Ideally located close to Tower Bridge and within walking distance to London Bridge and Tower Hill stations. Ideal for Canary Wharf and City commuters.





Second Floor



Third Floor

Total area (approx.): 83.8 sq. m (902.0 sq. ft)
 Balcony area (approx.): 17.3 sq. m (186.2 sq. ft)

35A Wapping High Street,
 London, E1W 1NR
 020 7702 3456
 ea2group.com



Energy Rating: We aim to make our particulars both accurate and reliable. However they are not guaranteed; nor do they form part of an offer or contract. If you require clarification on any points then please contact us, especially if you're travelling some distance to view. Please note that appliances and heating systems have not been tested and therefore no warranties can be given as to their good working order.