



Foxborough Gardens, SE4

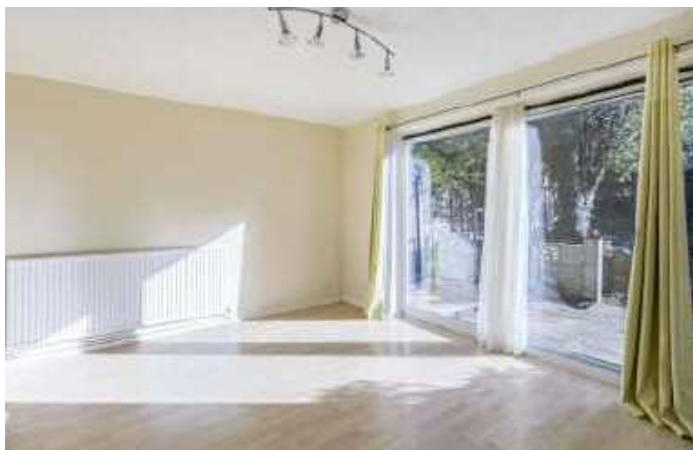
£2,300 Per calendar month

A three bedroom house in a quite cul-de-sac. The property comprises a brand new Howdens eat-in kitchen, separate reception that leads to the private garden, three bedrooms and plenty of storage. The property has a full repaint throughout.

Foxborough Gardens is located conveniently for Crofton Park, Catford Bridge and Ladywell stations which all have regular services into central London.

Features

- Newly Refurbished
- Three Bedrooms
- Reception Room
- Eat-In Kitchen
- Private Garden
- Close To Public Transport

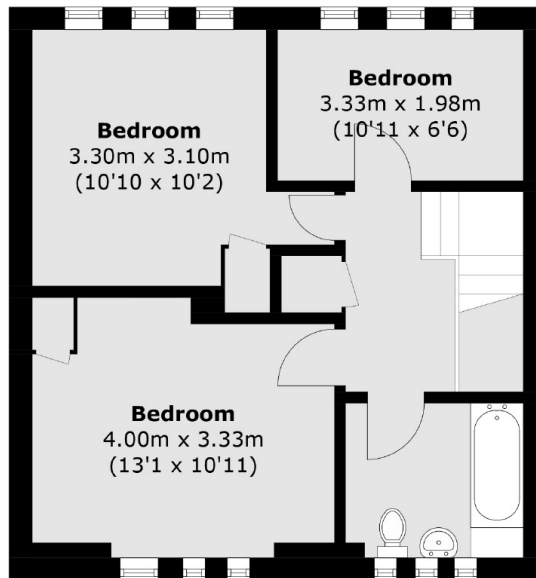


Foxborough Gardens, SE4

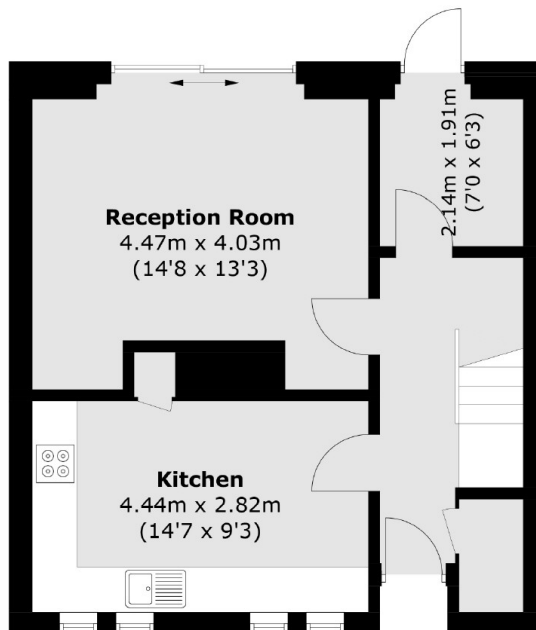
Comprising a large reception room, eat-in kitchen breakfast room, bathroom and three double bedrooms the property also has the added benefit of a private rear garden.



Foxborough Gardens, London, SE4



First Floor



Ground Floor

Total area (approx.): 90.3 sq. m (972 sq. ft)