



## Hallfield Estate, W2

£2,500 Per week

A spacious and modern one bedroom apartment with wooden floors and lift access. The property has a good size kitchen with breakfast bar and gas hob, bedroom with fitted storage and a modern bathroom with shower over bath.

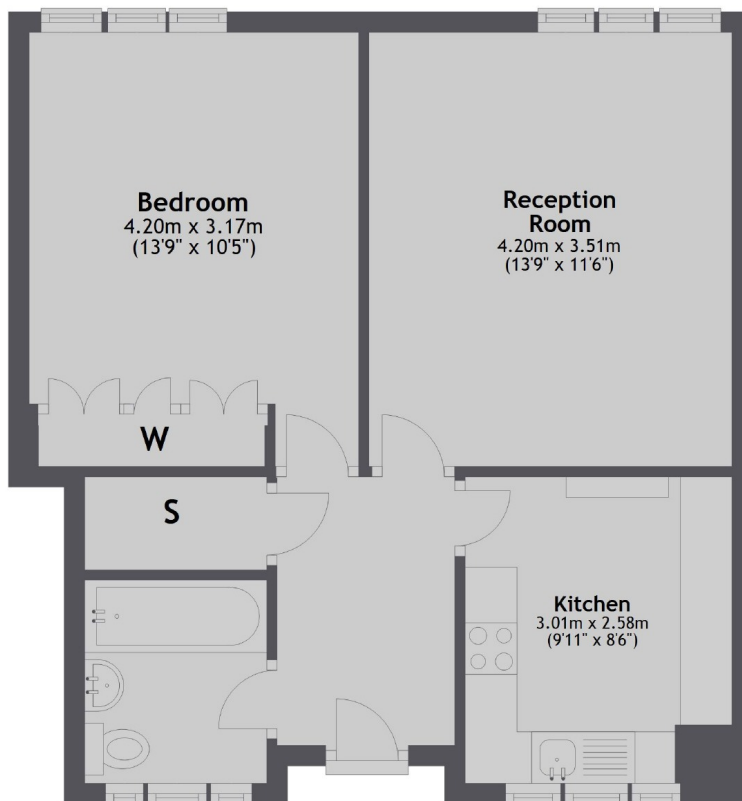
The property is moments from local transport, shops and restaurants and Hyde Park is only a short walk away.

### Features

- One Bedroom
- Hyde Park
- Storage
- Wooden Floors
- Modern
- Lift Access

# Hallfield Estate, London, W2

## Second Floor



Total area: approx. 47.2 sq. metres (508.2 sq. feet)