

More sides to city living.

The Octagon

theoctagonbirmingham.co.uk

Contents

| | |
|------------------------------|----|
| <u>Introduction</u> | 03 |
| <u>Your neighbourhood</u> | 04 |
| <u>Living at The Octagon</u> | 08 |
| <u>Apartment types</u> | 10 |
| <u>Your spaces</u> | 22 |





The Octagon is the world's first purely octagonal high-rise residential building. At 155 metres, it is Birmingham's tallest building, offering unparalleled views of the city and beyond.

Live in an iconic landmark where bold design meets refined elegance. The Octagon's sculpted, metallic façade creates a striking crystalline form, reflecting light and shadow throughout the day - offering ever-changing beauty from every angle.



Perfectly placed in the heart of Birmingham. Connect to culture, entertainment, creativity, business, the rest of the UK and the world. This is Paradise.

Experience life with everything at your fingertips. The Octagon, positioned at the northern gateway of Paradise, is a dynamic and creative neighbourhood where food, design, and culture come together. Immerse yourself in a thriving community, where every corner holds something new to explore.

At the centre of it all



Your neighbourhood

The City's heartbeat, right outside. A place packed with world-class shopping, top-tier dining, and cultural attractions, all just moments away. Enjoy scenic walks along the canal, explore bustling streets, or relax in nearby green spaces. The Octagon places you on the doorstep of everything Birmingham has to offer.

A PARADISE All within a 5 min walk

From coffee to culture, there's plenty to explore that's right on your doorstep.

- ① ROSA'S THAI CAFE
- ② ALBERT'S SCHLOSS
- ③ LA BELLEZZA
- ④ DISHOOM
- ⑤ COW & SOW
- ⑥ BIRMINGHAM MUSEUM AND ART GALLERY
- ⑦ F1 ARCADE
- ⑧ YORK'S CAFE

B JEWELLERY QUARTER Approx. 11 min walk

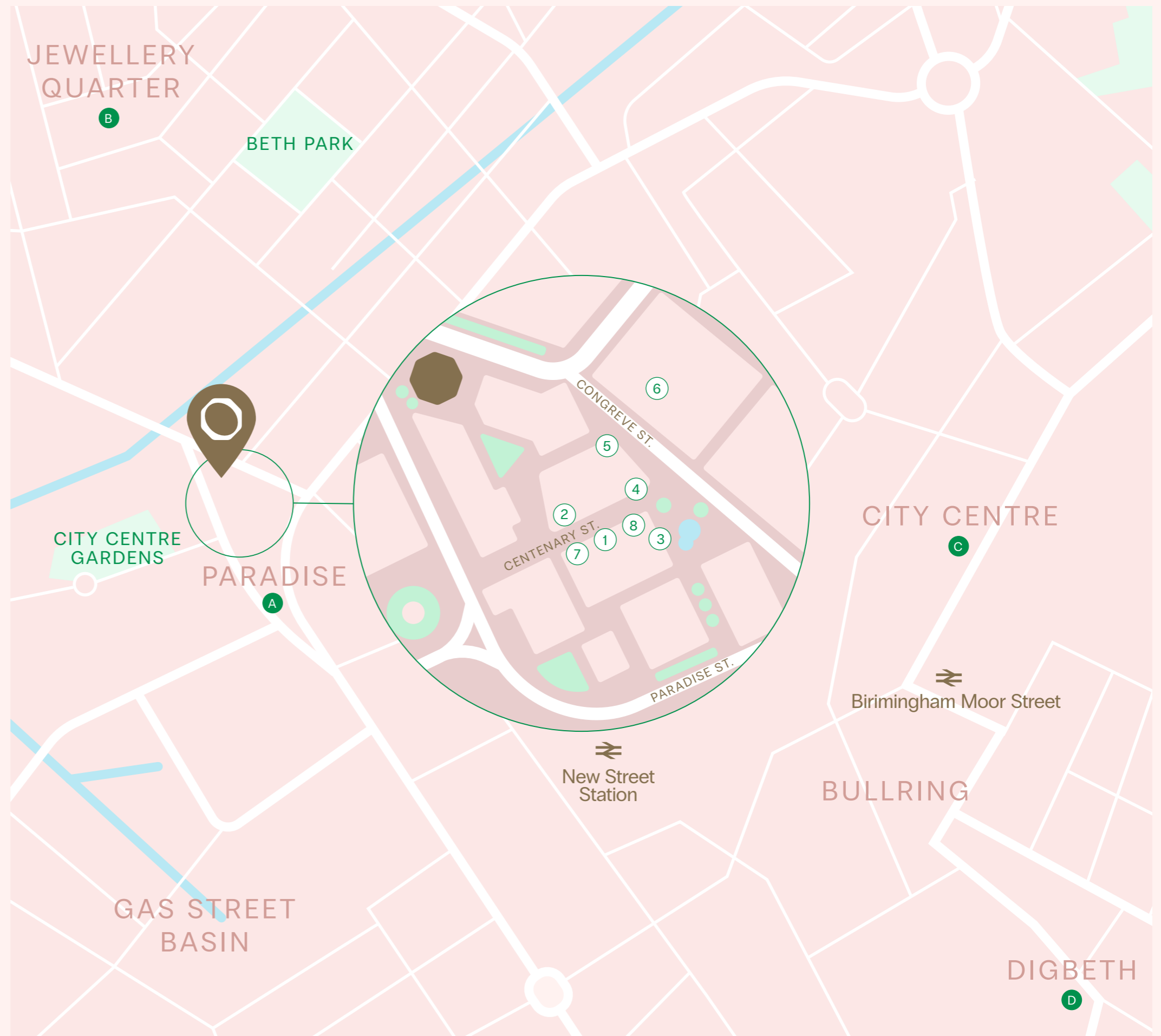
A historic area with jewellers, independent, trendy bars and a thriving food scene.

C CITY CENTRE Approx. 12 min walk

A dynamic mix of shopping and dining, including the Bullring & Grand Central Shopping Centre.

D DIGBETH Approx. 20 min walk

A creative and cultural hotspot, known for its street art, independent bars, and vibrant nightlife.



8 wonders in Paradise



1.



2.



3.



4.



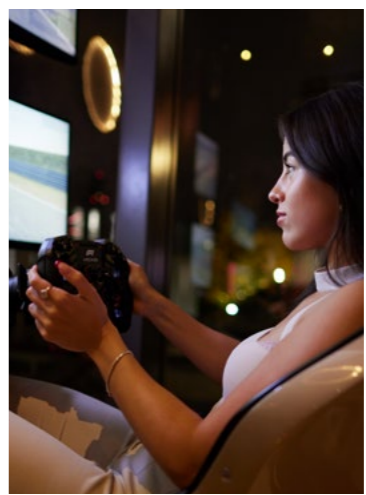
5.

Some of our neighbourhood top picks right on your doorstep.

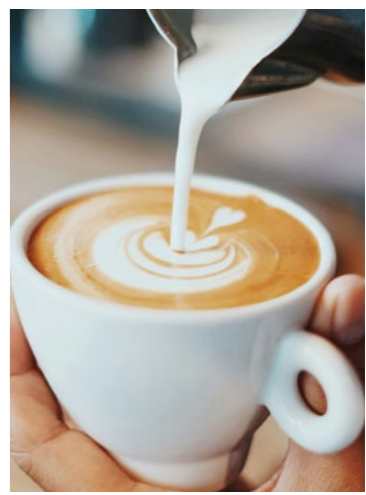
- 1. **ROSA'S THAI CAFE**
3 min walk, One Chamberlain Sq,
A family of foodies dedicated to serving up authentic Thai food.
- 2. **ALBERT'S SCHLOSS**
3 min walk, Paradise Circus, Chamberlain Sq
Bavarian-style restaurant and bar with roaring fires and live performances.
- 3. **LA BELLEZZA**
4 min walk, 2 Chamberlain Sq,
Beautiful Italian restaurant and pizzeria, with an outdoor terrace.
- 4. **DISHOOM**
3 min walk, One Chamberlain Sq,
Restaurant and bar serving Bombay comfort food.
- 5. **COW & SOW**
3 min walk, One Chamberlain Sq
Steakhouse featuring an array of prime aged steaks.
- 6. **BIRMINGHAM MUSEUM AND ART GALLERY**
3 min walk, Chamberlain Sq
Get your culture fix with collections ranging from fine art to archaeology.
- 7. **F1 ARCADE**
4 min walk, 2 Chamberlain Sq,
A thrilling simulation racing experience with tasty food, and unique cocktails.
- 8. **YORK'S CAFE**
4 min walk, Two Chamberlain Sq,
Vibrant, all-day dining with high-quality coffee and award-winning brunch.



6.



7.



8.

MORE

sides to
city living.

A new landmark, rising above the city's tallest. This is life from a new vantage point, a world-first in city living. Large opening windows frame exceptional views.

The building's unique shape creates apartments that are larger, wider and lighter than conventionally shaped equivalents, with large opening windows that frame an unparalleled skyline.

The high life



Computer generated images are indicative only.

Premium design

Discover generous living spaces within a truly unique architectural landmark, designed by award winning architect practice Howells.

Bright and spacious apartments blend style, comfort, and functionality, with large windows that flood each room with natural light.

Clean lines, open layouts, and quality finishes made for modern living enhance the sense of openness in each apartment.



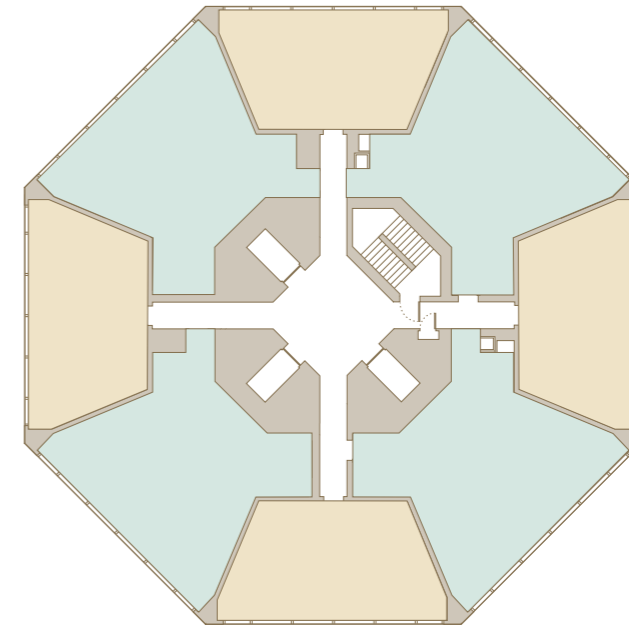
Find your apartment

- 1 Bedroom
- 2 Bedroom
- 3 Bedroom

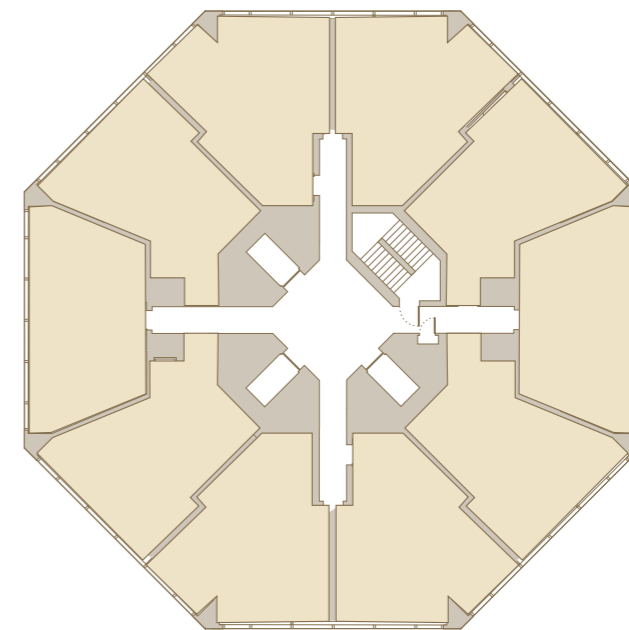
The Octagon is home to 370 apartments offering a mix of one, two and three-bedroom options. Discover a collection of beautifully designed homes where skyline views, Scandinavian comfort, and city energy come together. Modern wooden flooring and soothing, neutral tones create a serene and inviting atmosphere.

From stylish 1-bedroom apartments to expansive 3-bedroom penthouses, each space is crafted for modern living - defined by refined interiors, tactile materials, and a distinctly urban edge, courtesy of BoConcept's award-winning design.

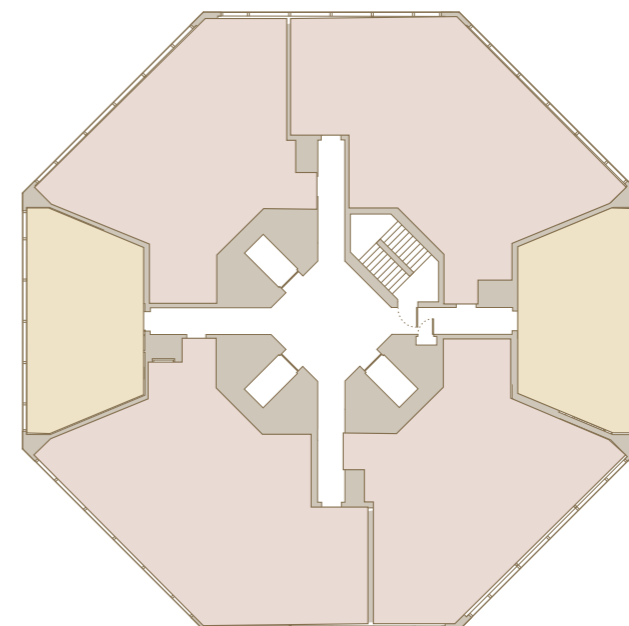
Levels 1-36



Levels 37-43

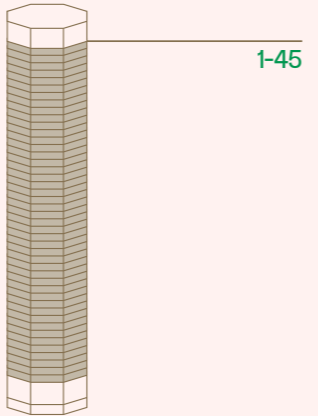


Levels 44-45



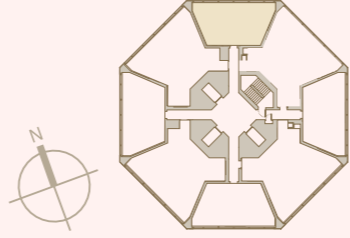
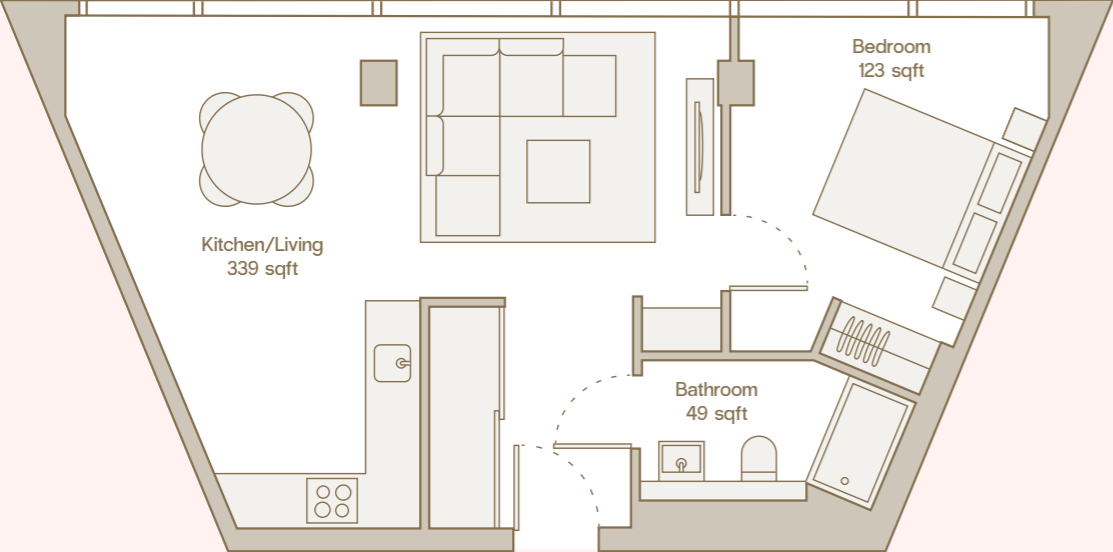
1 Bedroom

A space designed for effortless living. Thoughtfully crafted interiors, open-plan design, and room wide windows create a light-filled sanctuary in the city.



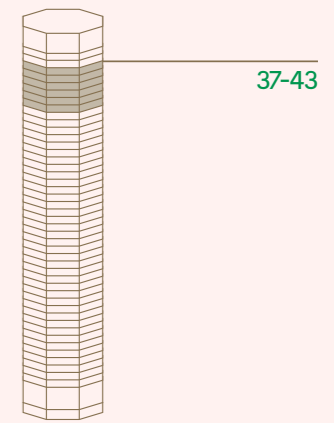
TYPE A LEVELS 1-45

| Total Area | Kitchen/Living | Bedroom | Bathroom |
|------------|----------------|----------|----------|
| 577 sqft | 339 sqft | 123 sqft | 49 sqft |



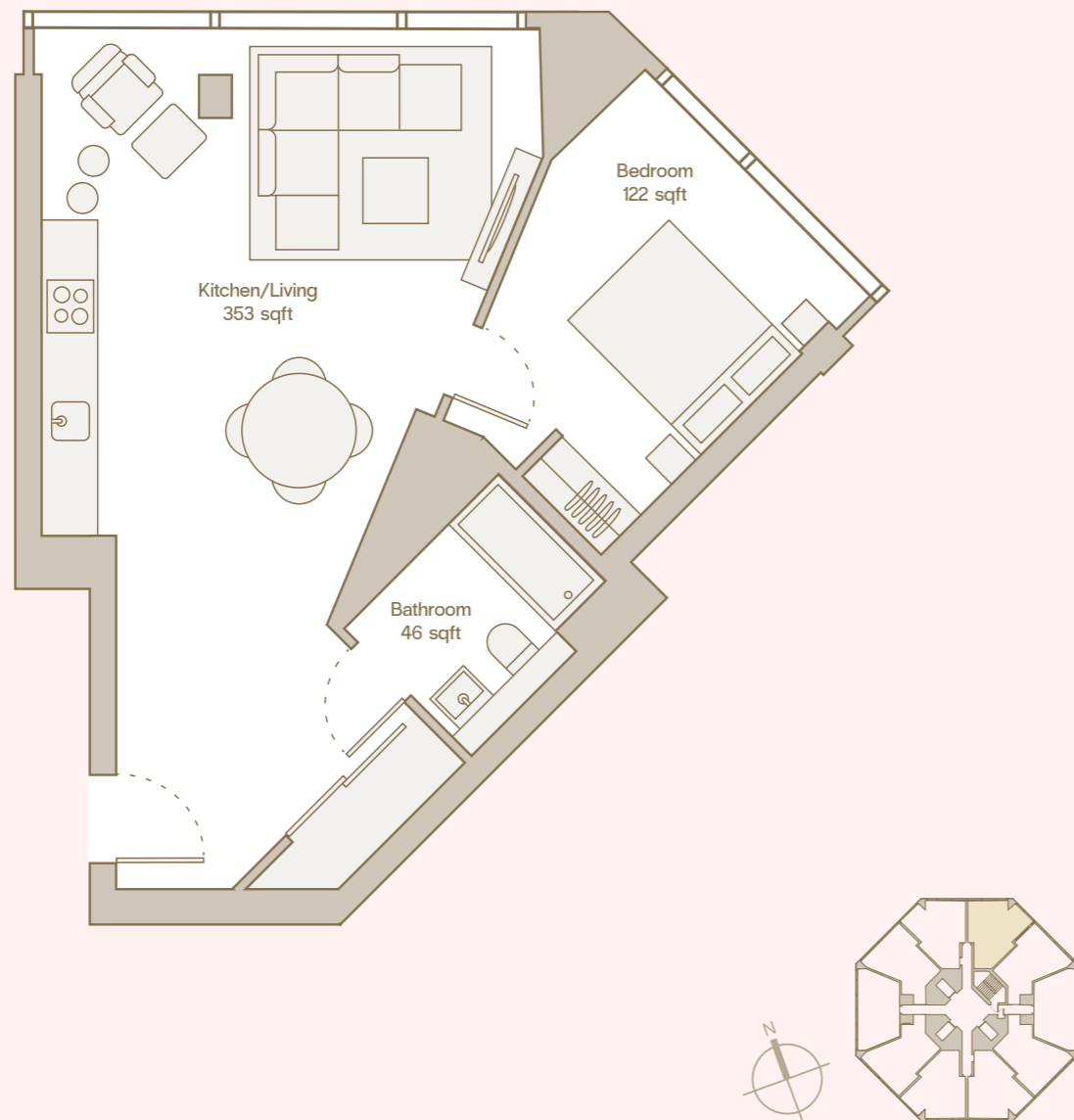
1 bedroom apartment

1 Bedroom



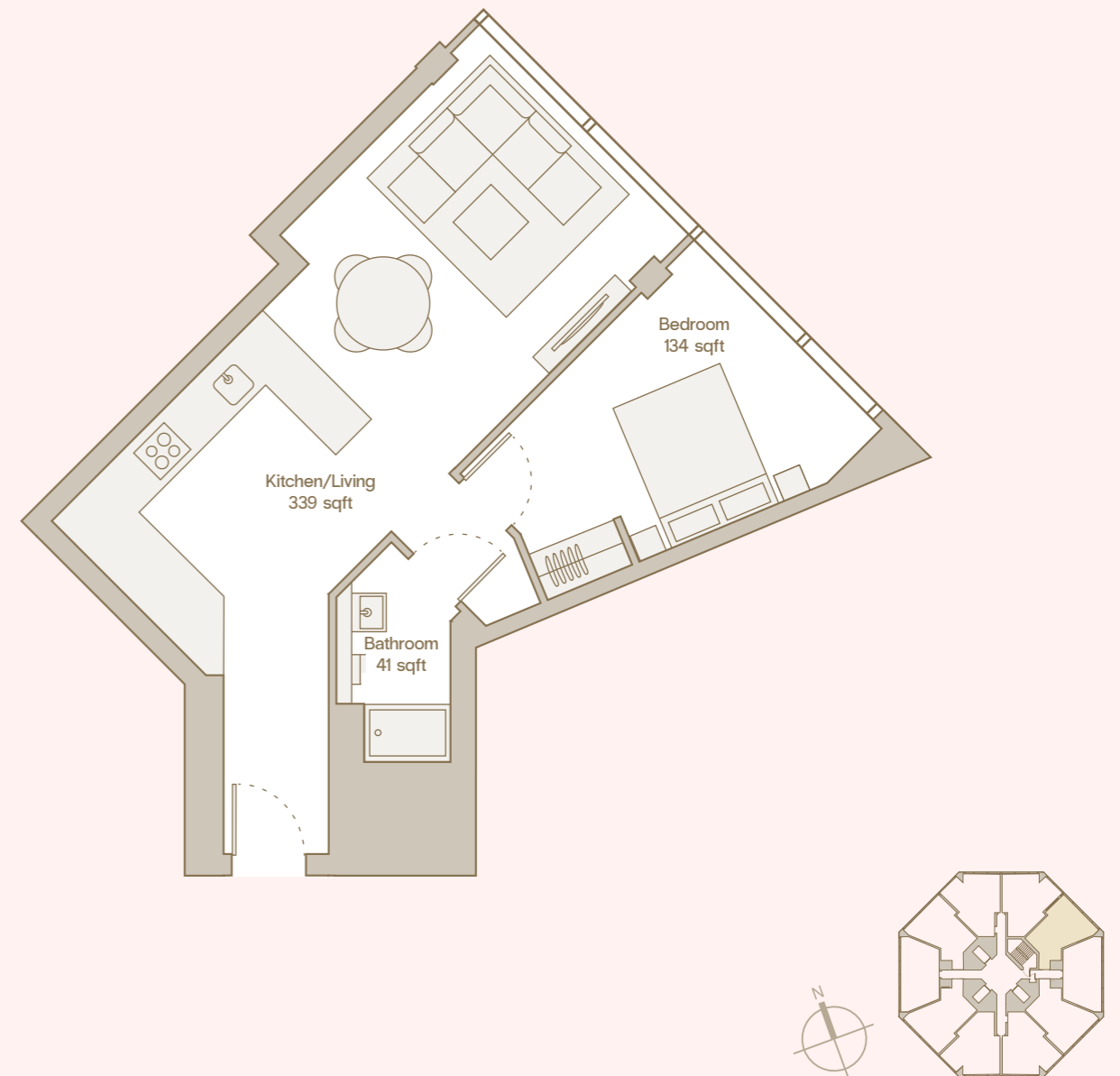
TYPE B LEVELS 37-43

| Total Area | Kitchen/Living | Bedroom | Bathroom |
|------------|----------------|----------|----------|
| 583 sqft | 353 sqft | 122 sqft | 46 sqft |



TYPE C LEVELS 37-43

| Total Area | Kitchen/Living | Bedroom | Bathroom |
|------------|----------------|----------|----------|
| 573 sqft | 339 sqft | 134 sqft | 41 sqft |





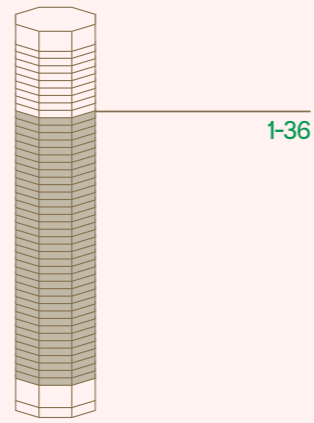
Homes with individuality, with each apartment enjoying a generous 13-metre facet of The Octagon.



1 bedroom apartment

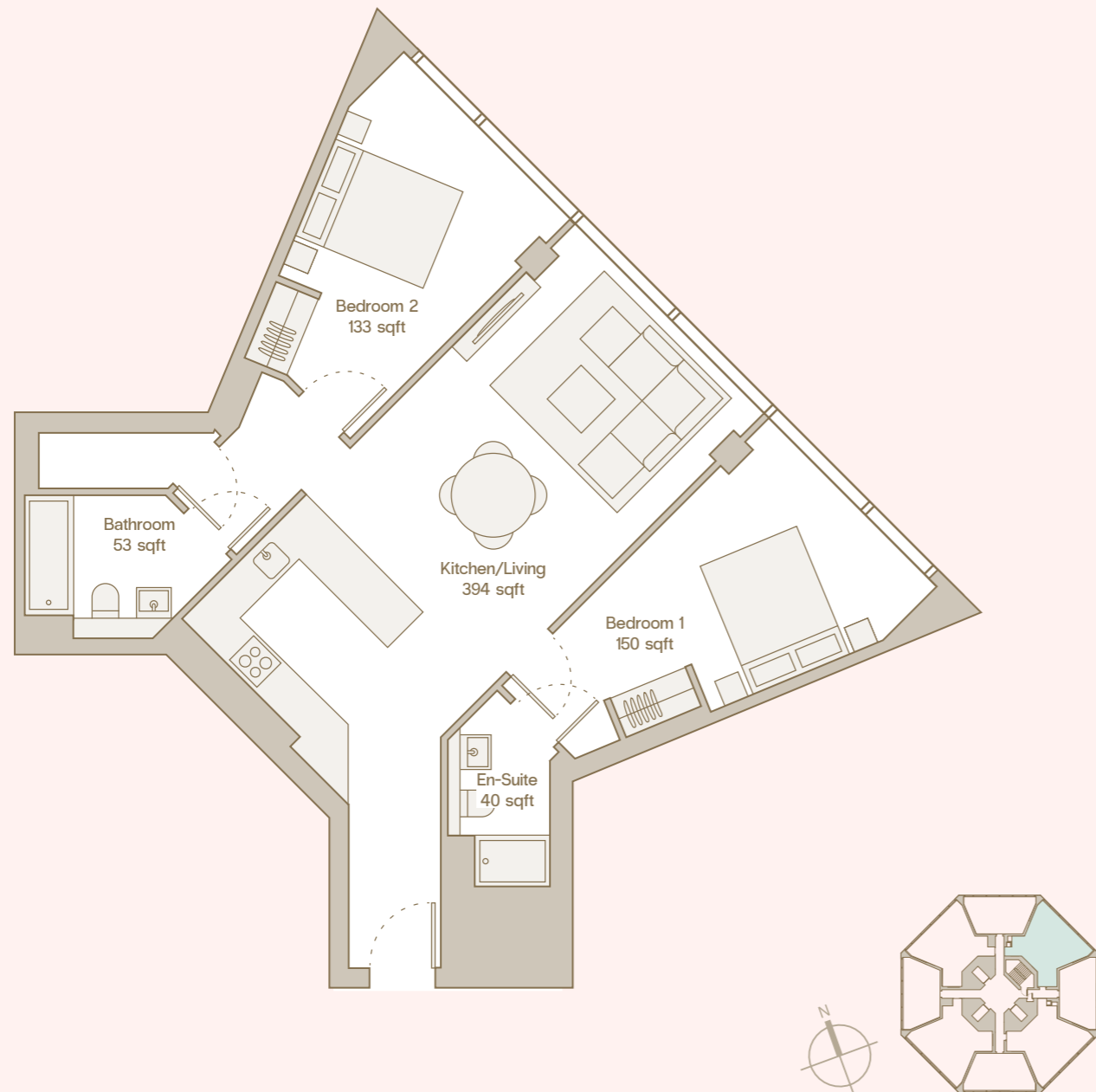
2 Bedroom

More room, more possibilities. A refined balance of style and space, these two-bedroom apartments offer generous open plan living area, premium finishes, and breathtaking city views. Perfect for sharing, hosting, or stretching out in comfort.



TYPE D - ALL 2 BEDROOMS

| Total Area | Kitchen/Living | Bedroom 1 | En-Suite | Bedroom 2 | Bathroom |
|------------|----------------|-----------|----------|-----------|----------|
| 860 sqft | 394 sqft | 150 sqft | 40 sqft | 133 sqft | 53 sqft |



2 bedroom apartment



2 bedroom apartment



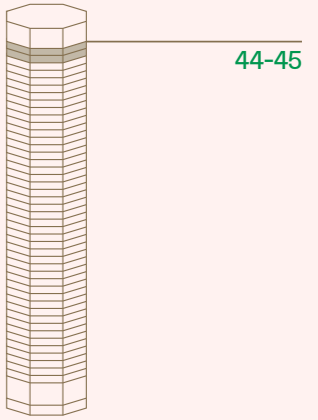
2 bedroom apartment



Each space is elegantly furnished by BoConcept - awarded Best Luxury Furniture & Homeware Brand in the World, 2022.

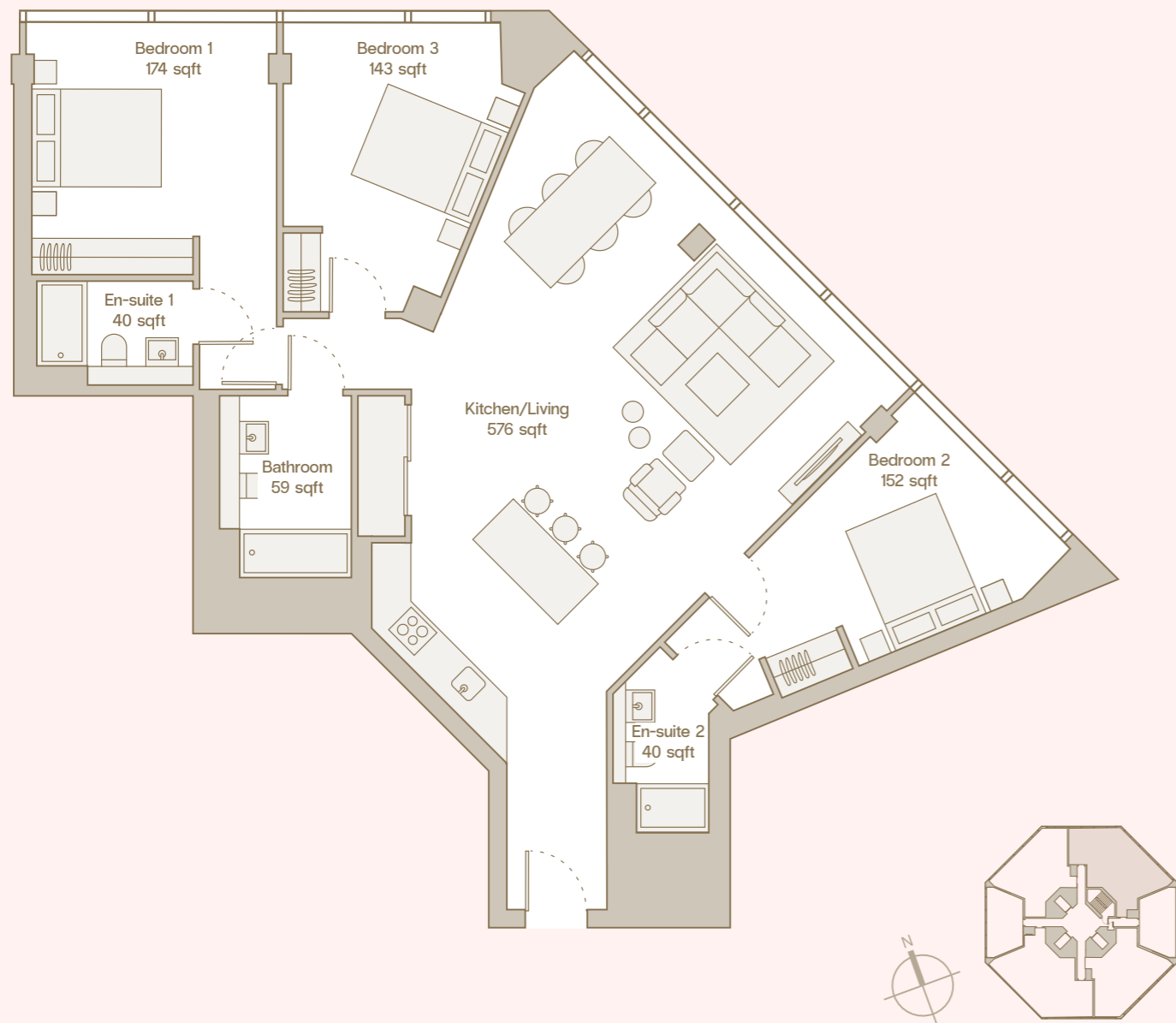
Penthouse Collection

A home with a view, and room to grow. Designed for those who want space without compromise, the Penthouse Collection combines elegant design, panoramic outlooks, and an effortless connection to the city's best views.



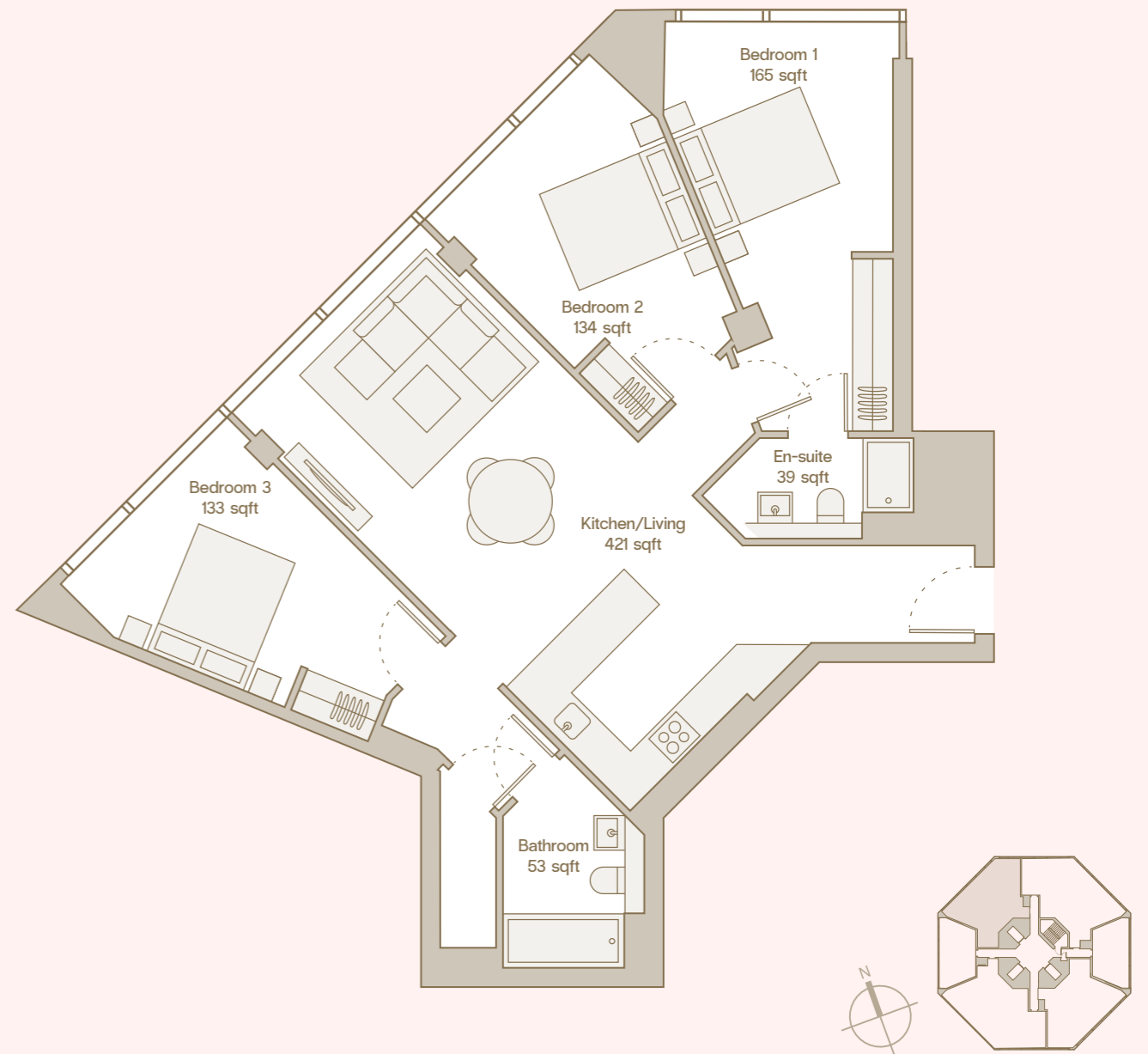
TYPE E

| Total Area | Kitchen/Living | Bedroom 1 | En-suite 1 | Bedroom 2 | En-suite 2 | Bedroom 3 | Bathroom |
|------------|----------------|-----------|------------|-----------|------------|-----------|----------|
| 1292 sqft | 576 sqft | 174 sqft | 40 sqft | 152 sqft | 40 sqft | 143 sqft | 59 sqft |



TYPE F

| Total Area | Kitchen/Living | Bedroom 1 | En-Suite | Bedroom 2 | Bedroom 3 | Bathroom |
|------------|----------------|-----------|----------|-----------|-----------|----------|
| 1044 sqft | 421 sqft | 165 sqft | 39 sqft | 134 sqft | 133 sqft | 53 sqft |









Unwind in a serene bedroom retreat and rejuvenate in bathrooms designed with clean lines and premium finishes.



Penthouse Collection

Computer generated images are indicative only.



THE EXTRAS INCLUDED SIDE

Thoughtfully curated amenities designed to elevate everyday living. Enjoy access to the gym, co-working spaces, and stylish resident lounges perfect for socialising or unwinding. With on-site maintenance, and pet-friendly policies, our apartments combine comfort, convenience, and community.

Resident lounge



Guest suite



Gym



Bicycle storage



Skyline views



Co-working



Private dining



Reception



Meeting rooms








Maintenance

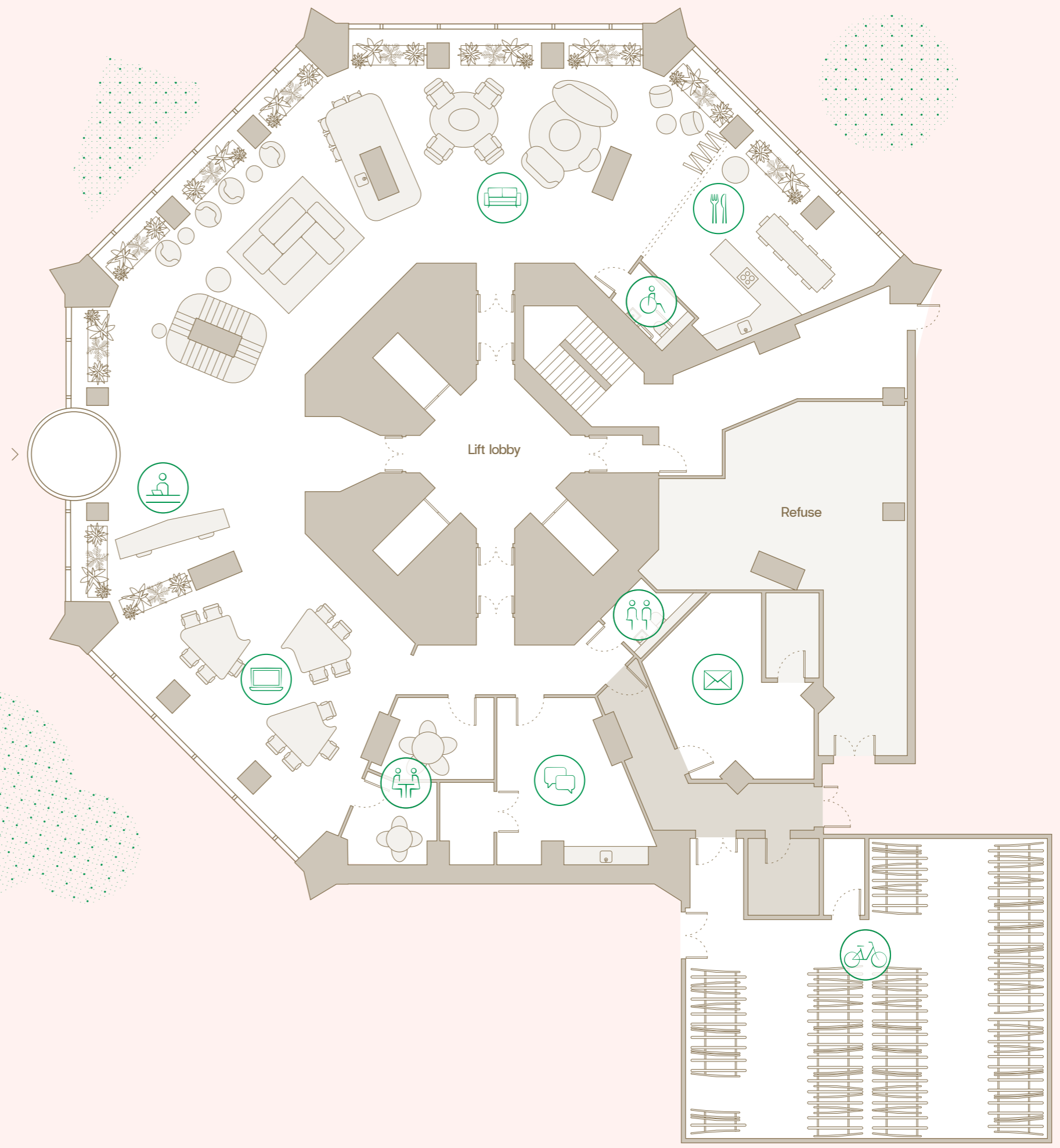


Lower Ground Floor Amenities

Designed with comfort and style in mind, the interiors not only compliment the building's unique design but also softens its bold edges.

Warm tones and rich textures define spaces for both getting work done and kicking back to relax. As you move from the work zones to the lounge areas, pops of colour and modern touches make the whole space feel fresh and inviting. You'll spot iconic pieces from Danish favourites like &Tradition and Audo CPH, plus sleek Italian-designed furniture that ties it all together beautifully.

| | |
|--|---|
|  Private dining |  Post room |
|  Lounge |  Cycle store |
|  Co-work |  WC |
|  Reception |  Accessible WC |
|  Meeting room |  Management office |





Reception



Co-work

Computer generated images are indicative only.



Lounge and bar

Computer generated images are indicative only.

THE WINE AND DINE SIDE

Enjoy the bookable private dining space - perfect for dinner parties, celebrations, or gatherings. Fitted out with a modern kitchen and elegant furnishings.



Private dining

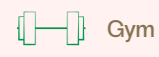
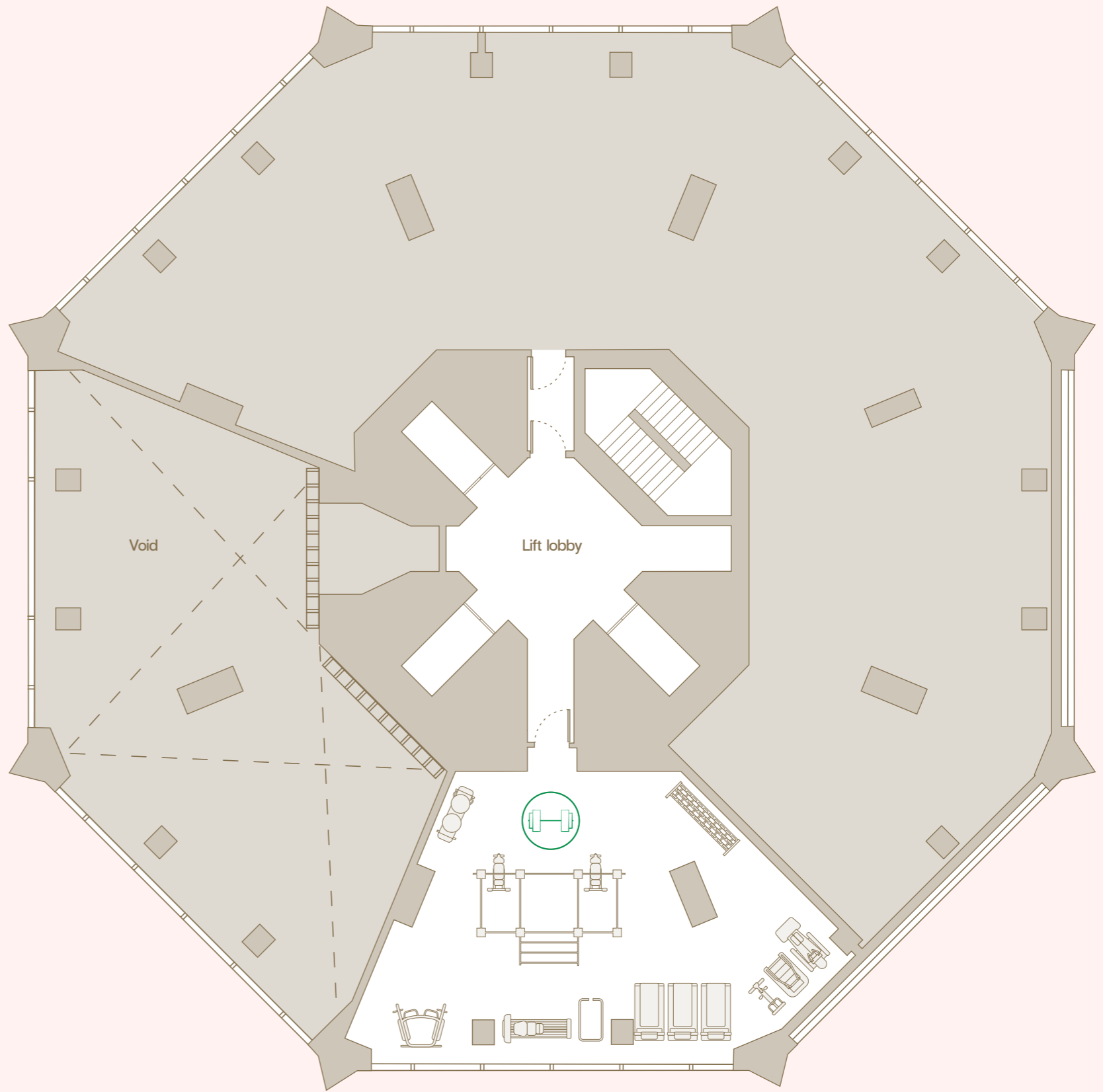
Computer generated images are indicative only.

Upper Ground Floor Amenity

The Octagon has partnered with Technogym to bring you a fully equipped gym that's perfect for every fitness level.

From immersive virtual training experiences on Excite Live Treadmill, Vario and Climb, to a wide range of free weights and HIIT training cardio products such as the Skillrun and Skillup. Take your spin and cycling to the next level using the Technogym Bike with a vast array of on-demand and live spin classes.

The complimentary Technogym App allows you to track all your Technogym workouts and any workouts outside the gym, as well as providing lots of training and wellness content.



Gym





Ready to make your move?

Book a viewing today and meet our dedicated on-site team. Live in the heart of Birmingham and experience more sides to city living.

✉ info@theoctagonbirmingham.co.uk

🌐 theoctagonbirmingham.co.uk

📷 [theoctagonbirmingham](https://www.instagram.com/theoctagonbirmingham)



Brought to you by CDL and managed by Allsop, creating exceptional homes.



CITY
DEVELOPMENTS
LIMITED

allsop