



Langdale Grove

, Corby, NN17 2DG

£119,950



Langdale Grove

, Corby, NN17 2DG

£119,950



Entered via a double glazed door,

Kitchen/Breakfast Room

10'3 x 9'1 (3.12m x 2.77m)

Fitted to comprise a range of base and eye level units with a single sink and drainer, electric hob, electric oven, space for automatic washing machine, space for low level fridge/freezer, double glazed window to side and rear elevation, double glazed door to rear elevation, electric radiator, breakfast bar, airing cupboard, doors to:

Lounge

14'3 x 8'1 (4.34m x 2.46m)

Double glazed French doors to rear elevation, electric radiator, doors to:

Bathroom

8'9 x 5'3 (2.67m x 1.60m)

Fitted to comprise a three piece suite consisting of a panel bath with shower over, low level wash hand basin, low level pedestal, extractor, double glazed window to front elevation.

Bedroom One

14'0 x 8'0 (4.27m x 2.44m)

Double glazed window to side elevation, electric radiator.

Bedroom Two

9'9 x 8'6 (2.97m x 2.59m)

Double glazed window to side elevation, electric radiator.

Outside

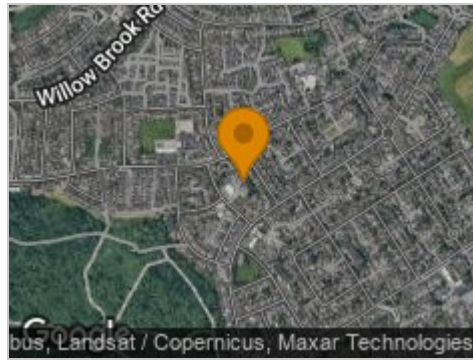
Comprising a shared green space and drying area, allocated parking is located for one vehicle.



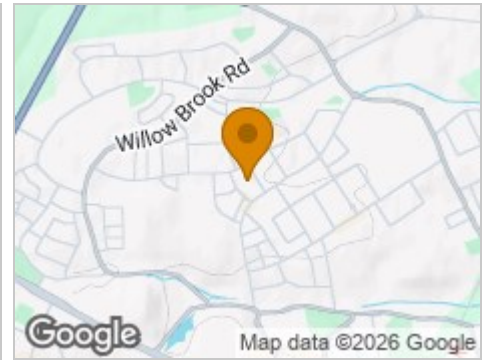
Road Map



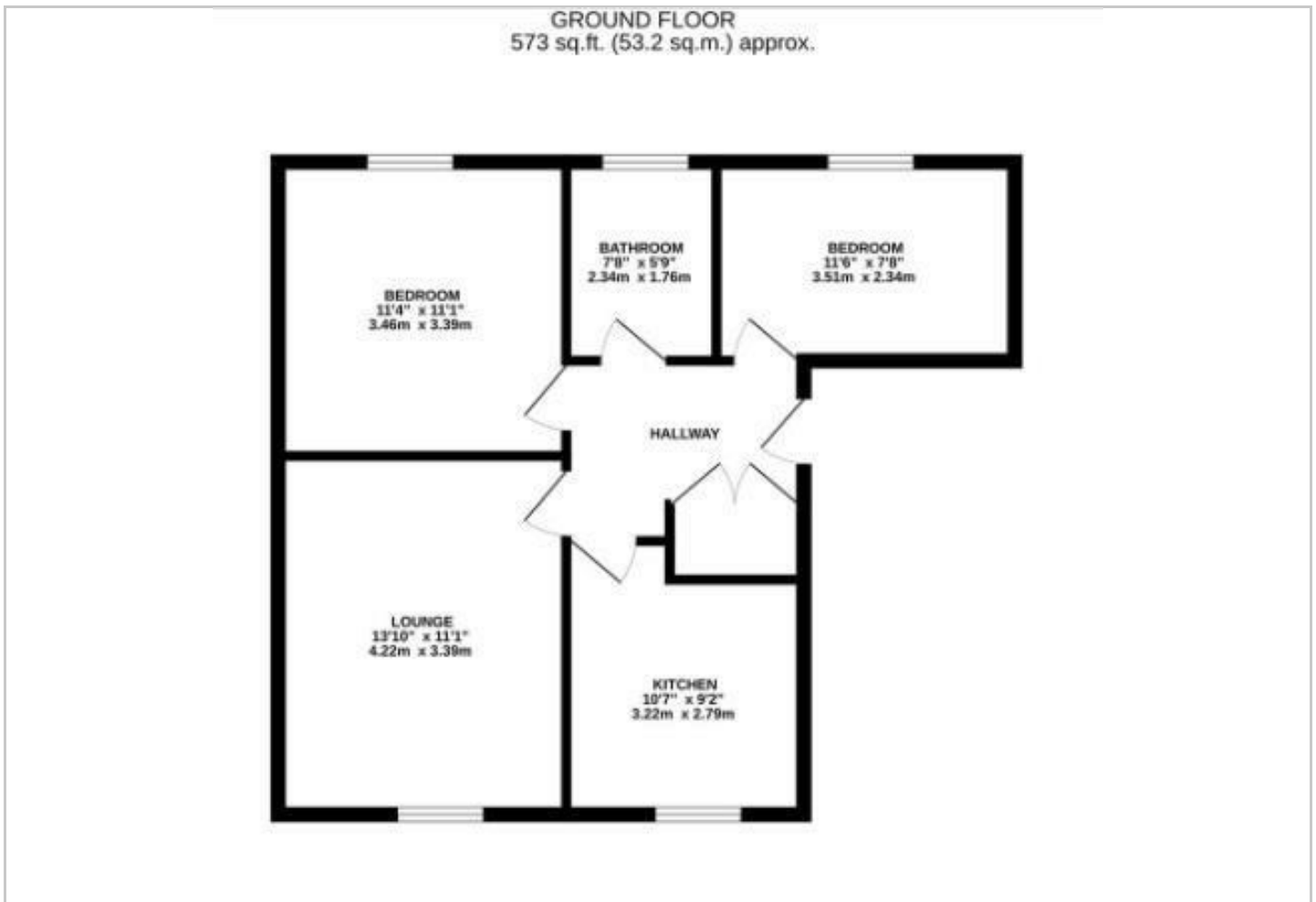
Hybrid Map



Terrain Map



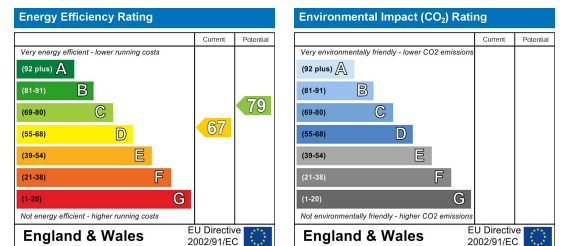
Floor Plan



Viewing

Please contact our Stuart Charles Estate Agents Office on 01536 234264 if you wish to arrange a viewing appointment for this property or require further information.

Energy Efficiency Graph



These particulars, whilst believed to be accurate are set out as a general outline only for guidance and do not constitute any part of an offer or contract. Intending purchasers should not rely on them as statements of representation of fact, but must satisfy themselves by inspection or otherwise as to their accuracy. No person in this firm's employment has the authority to make or give any representation or warranty in respect of the property.