

Hyman
Estate & Letting



Hill
Agent



26 Greenways Crescent, Shoreham-by-Sea, West Sussex, BN43 6HS

26 Greenways Crescent, Shoreham-by-Sea, West Sussex, BN43 6HS

£525,000



A very well presented and EXTENDED three-bedroom family home located in a highly popular location.

Hyman Hill is delighted to offer this very well presented and double story extended three-bedroom family home located in a highly popular location in Shoreham.

On the ground floor the property benefits from a lounge opening onto an extended kitchen dining room and cloakroom.

The first floor has three bedrooms and bathroom.

The outside comprises of a large rear garden with cabin which can be used as an office/ gym and off-road parking for several cars to the front. There is also an EV charger.

Located in Shoreham academy catchment area and close to Buckingham Park this property is an ideal family home.



Shoreham-by-Sea is a charming, historic town, 7 miles west of Brighton and 6 miles east of Worthing. The town centre is vibrant offering lots of independent and corporate shops, cafes, pubs and restaurants. The Holmbush Shopping Centre can be found close by providing a large M&S, Next and Tesco.

There is excellent access to the east/west A27 & M23 and public transport services including Shoreham-by-Sea mainline railway station is only a short walk away offering direct trains to Brighton, London and to the west.

The property is in catchment of Primary & Secondary schools, including popular Shoreham Academy with its 'Outstanding' Ofsted rating.

Shoreham by Sea also benefits from a highly popular Beach, South Downs National Park and River Adur affording fantastic water sports and walking opportunities.

-
- Extended family home
 - Three bedrooms
 - Kitchen dining room
 - Ground floor cloakroom
 - Large rear garden
 - Off road Parking
 - Highly popular location
 - Shoreham Academy catchment







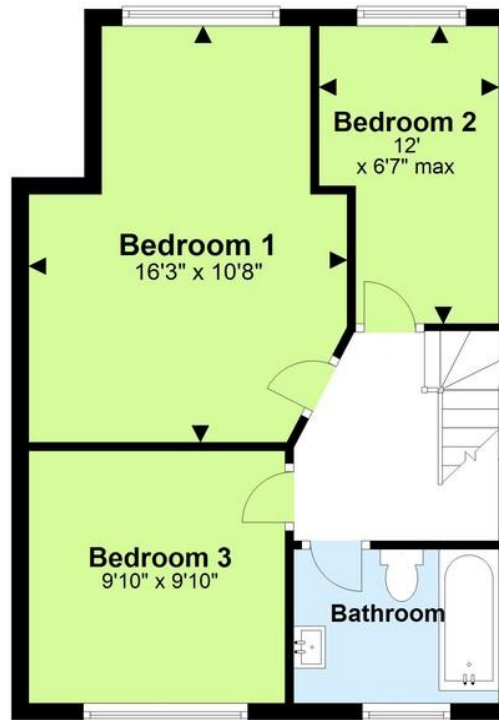




Ground Floor



First Floor



Total area: approx. 966.8 sq. feet

For illustrative purposes only. Not to scale.
Plan produced using PlanUp.

Useful Information

Council Tax: D

Tenure: Freehold

Local Authority: Adur

Hyman  Hill
Estate & Letting Agent

To book a viewing, or a valuation of your own property, get in touch with one of our experts.

Southwick – 01273 597730
info@hymanhill.co.uk

Shoreham – 01273 454511
shoreham@hymanhill.co.uk

Lettings – 01273 597730
lettings@hymanhill.co.uk

www.hymanhill.co.uk