



OVER 60?

Secure this property
for up to **59% less!**

Guide Price
£230,000

Freehold

2x  2x  1x 

Regan Mews, Old
Folkestone Road, Dover,
Kent, CT17

Wards
Helping you move forwards



Main features

- Sought after location of Aycliffe
- Large kitchen with integrated appliances
- Downstairs cloakroom, family bathroom and en-suite shower room
- Close to shops and easy access to Dover town
- No onward chain complications

Accommodation

GROUND FLOOR

Entrance Hall
Downstairs Cloakroom
Kitchen Area : 15'4 x 9'3 (4.68m x 2.82m)
Lounge/Diner : 16'8 x 12'9 (5.08m x 3.89m)

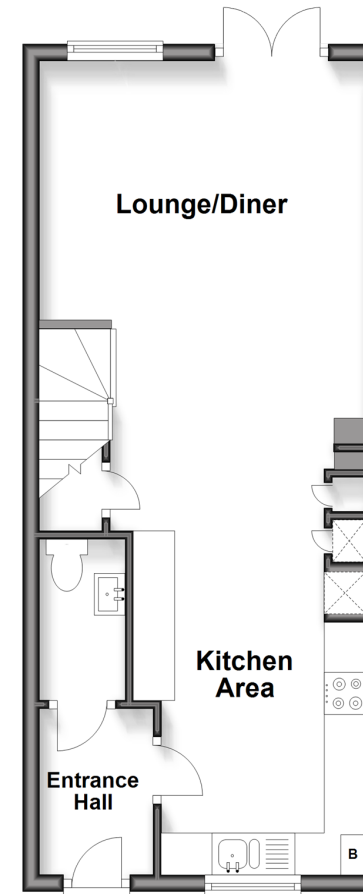
FIRST FLOOR

Landing
Bedroom 1 : 13'0 x 10'7 (3.97m x 3.23m)
En-Suite Shower Room: 6'4 x 5'6 (1.93m x 1.68m)
Bathroom : 6'7 x 6'4 (2.01m x 1.93m)
Bedroom 2 : 13'1 x 7'8 (3.99m x 2.34m)

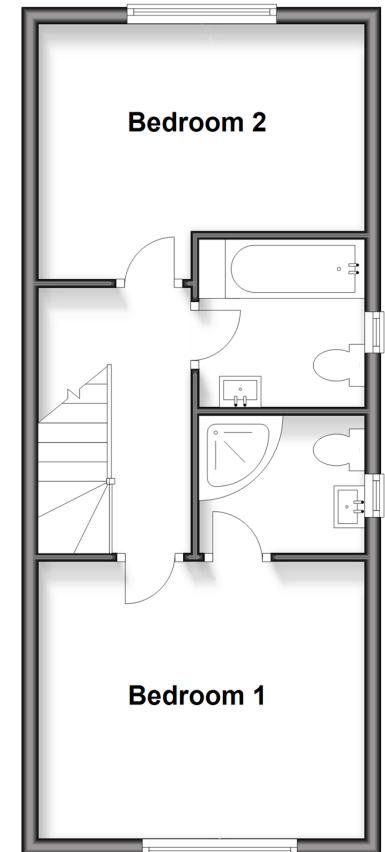
OUTSIDE

Front Garden
Rear Garden
Garden Shed
Allocated Parking

Ground Floor
Approx. 38.2 sq. metres (411.7 sq. feet)



First Floor
Approx. 38.2 sq. metres (411.7 sq. feet)



Call Dover - 01304 214876 ■ wardsofKent.co.uk

- Legal advice should be taken to verify fixtures/fittings, planning, alterations and/or lease details
- Appliances & services are untested, dimensions are approximate and floor plans are not to scale
- Through a Homewise Home For Life Plan people aged 60+ can secure this property for up to 59% less, by purchasing a Lifetime Lease



10736300/20260117/TE/OV