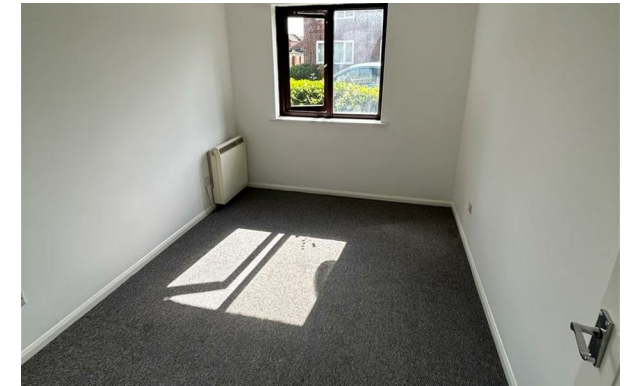


# THE HOME AGENCY

*'Passion for property.'*



20, Almond Court Almond Road, Freemantle, Southampton,

£875 Per Month

- Purpose Build Flat
- Off Road Parking
- Unfurnished
- Viewing Recommended
- Electric Heating
- Small Patio Area
- Sought After Location
- Double Glazing
- Ground Floor
- No Pets

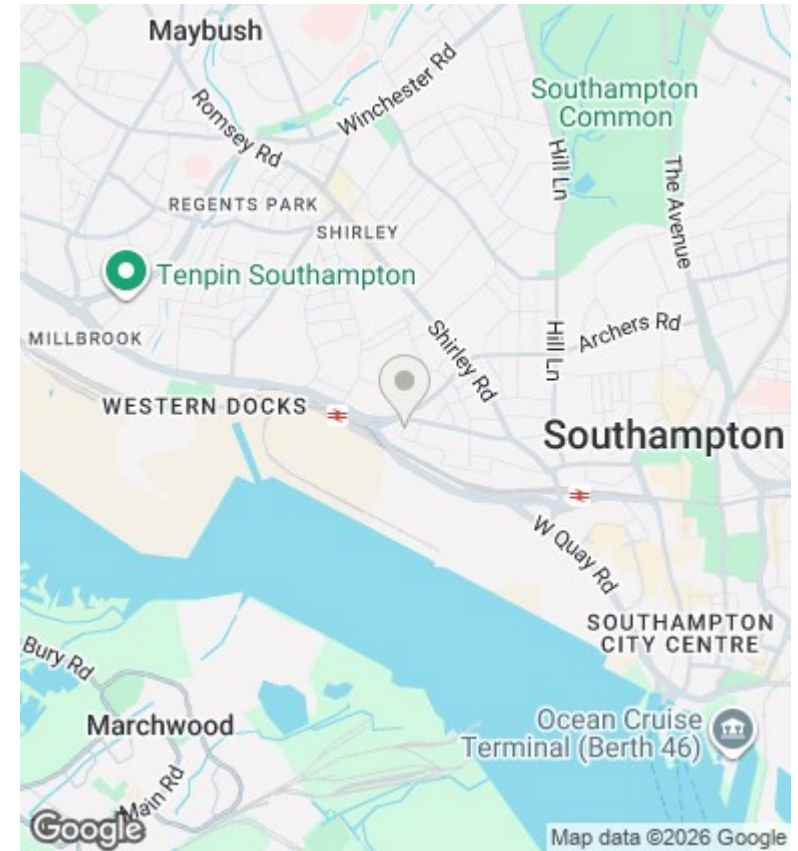
11 London Road, Southampton, Hampshire, SO15 2AE  
02380 632632

enquiries@thehomeagency.net  
<https://thehomeagency.net>

20 ALMOND COURT SO15 3SG



GROUND FLOOR FLAT  
34.56 Msq



## Directions

## Viewings

Viewings by arrangement only. Call 02380 632632 to make an appointment.

## Council Tax Band

C

## EPC Rating:

D

Energy Efficiency Rating		Current	Potential
<i>Very energy efficient - lower running costs</i>			
(92 plus) <b>A</b>			
(81-91) <b>B</b>			
(69-80) <b>C</b>			77
(55-68) <b>D</b>	66		
(39-54) <b>E</b>			
(21-38) <b>F</b>			
(1-20) <b>G</b>			
<i>Not energy efficient - higher running costs</i>			
<b>England &amp; Wales</b>		EU Directive 2002/91/EC	