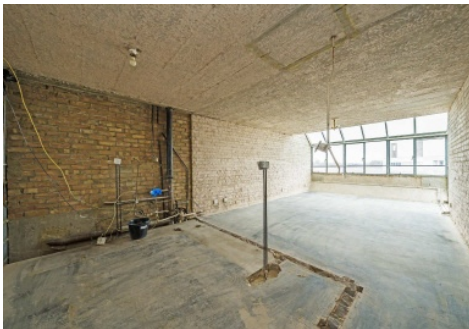


Frank Harris & Co.



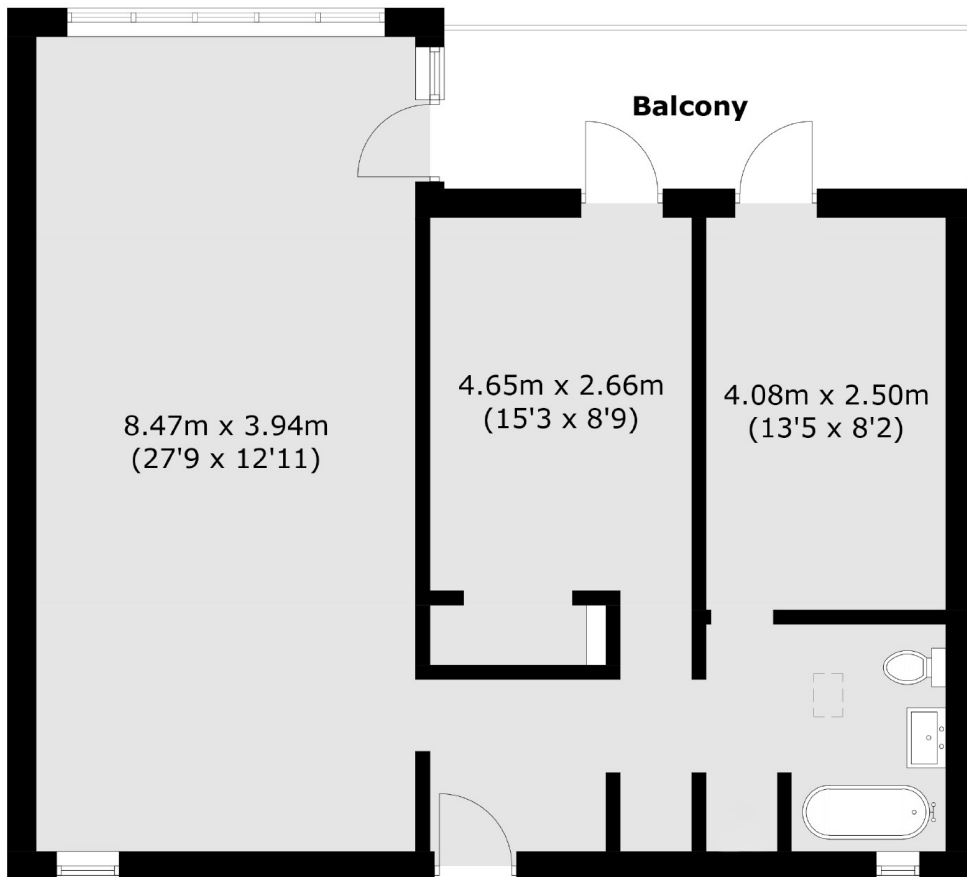
Bloomsbury, WC1N

£650,000

Located within the iconic Grade II listed Brunswick Centre, this property presents a rare opportunity for complete refurbishment. The apartment has been stripped to bare brick, offering a blank canvas for personalisation and transformation. It features a private balcony and comes with a 47-year lease, making it an ideal project for those looking to create a bespoke living space in a distinctive architectural landmark.

Foundling Court is well positioned within the Brunswick Centre offering endless shops and access to fantastic transport links, London's universities and marvellous green spaces.

Frank Harris & Co.



Total area (approx.): 70.2 sq. m (755.6 sq. ft)
Balcony area (approx.): 9.0 sq. m (96.8 sq. ft)

Frank Harris & Co. Bloomsbury and Kings Cross
81 Marchmont Street,
London, WC1N 1AL
020 7405 4444
bloomsburysales@frankharris.co.uk

Energy Rating: E - 47,67. We aim to make our particulars both accurate and reliable. However they are not guaranteed; nor do they form part of an offer or contract. If you require clarification on any points then please contact us, especially if you're traveling some distance to view. Please note that appliances and heating systems have not been tested and therefore no warranties can be given as to their good working order.

