



Cromer Road, Mundesley NR11 8DB

welcome to

Cromer Road, Mundesley

With its generous accommodation, modern en-suite bedrooms, flexible living spaces, and captivating sea views, Peel House represents a superb opportunity to secure a coastal home in one of North Norfolk's most desirable locations.



Peel House is an impressive detached coastal home offering a rare blend of spacious, modern living and timeless seaside charm. Perfectly positioned within the sought-after village of Mundesley, the property enjoys an elevated setting with a balcony overlooking the sea, providing breathtaking views from sunrise to sunset and is being sold with no onward chain!

The property offers accommodation comprising conservatory, entrance hall, lounge/ diner, kitchen, cloakroom, study, utility and a bedroom with dressing room and ensuite on the ground floor. The first floor boasts a landing with sea views and three double bedrooms, all with ensembles. Externally the property offers off-road driveway parking, a double garage and a good sized rear garden with balcony, brick-built summerhouse, greenhouse and plenty of outdoor space for entertaining.

Conservatory

Of uPvc construction with a brick base, double-glazed window to side and front aspects, double-glazed door to front aspect, double-glazed door into house, radiator, wall lights, television point and tiled flooring.

Entrance Hallway

Stairs to first floor, doors into kitchen and lounge/ diner, carpeted flooring.

Lounge/Diner

Two double-glazed windows to rear aspect offering sea views, two double-glazed windows to front aspect, double-glazed sliding doors to side aspect, television and telephone point, surround sound speakers, spotlights, 5 radiators and carpeted flooring.

Study

Double-glazed window to front aspect, wall light, storage cupboard, radiator and carpeted flooring.

Kitchen

Fitted kitchen with a range of wall and base units with work surfaces over, stainless steel sink and drainer, tiled splashback, island with wine rack, electric oven and hob with hood over, plumbing for dishwasher, space for

fridge/freezer, spotlights, radiator, door to rear lobby, double-glazed windows to front and rear aspects and tiled flooring.

Utility Room

Double-glazed window to side aspect, stainless steel sink and drainer, plumbing for washing machine, space for washing machine and tumble dryer,

Rear Lobby

Double-glazed door to side aspect, dado rail, tiled flooring.

Cloakroom

Double-glazed window to rear aspect, WC, wash hand basin, towel rail and tiled flooring.

Bedroom One (ground Floor)

Double-glazed windows to side and rear aspects, fitted wardrobes, loft access and carpeted flooring.

Ensuite/ Dressing Room

Dressing room with fitted wardrobes and carpeted floor. Ensuite comprising WC, wash hand basin, bath with mixer tap and electric shower over, towel rail, shaving point, fully tiled walls and a double-glazed window to side aspect.

First Floor Landing

Double-glazed window to rear aspect with sea and church views, airing cupboard with hot water tank, loft access, radiator and carpeted flooring.

Bedroom Two

Double-glazed windows to front and rear aspects with sea views, built in cupboard, television point, radiator and carpeted flooring.

Ensuite

Suite comprising part tiled shower cubicle, WC, wash hand basin with vanity unit, radiator, extractor fan, vinyl flooring and secondary double-glazed window to rear aspect,

Bedroom Three

Double-glazed windows to front and rear aspects, built in desk, two radiators, television point and carpeted flooring.

Ensuite

Suite comprising part tiled shower cubicle, WC, wash hand basin, radiator, vinyl flooring, and a double-glazed skylight to rear aspect,

Bedroom Four

Double-glazed window to front aspect, television point, built in wardrobe and carpeted flooring.

Ensuite

Suite comprising shower cubicle, WC, wash hand basin, extractor fan, towel rail, part tiled walls and vinyl flooring.

Front Garden

Brickweave driveway with off-road parking for approx. four vehicles, brick wall with space for gates, lawn bordered by flower beds and shrubs, side gates to both sides of the property.

Rear Garden

Enclosed garden with lawn, flower beds and shrubs, patio area, two greenhouses, brick-built summer house, outdoor lighting, outdoor tap, pond and rockery, spiral staircase to balcony.

Garage

Double garage with pitch roof and up and over door and loft/storage space and side personnel door.

Balcony

Private balcony with glass balustrade offering church and sea views.



view this property online williamhbrown.co.uk/Property/NWM110007



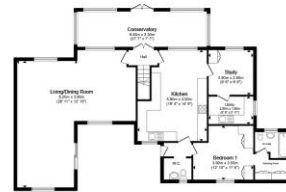
welcome to

Cromer Road, Norwich

- Detached Executive Home
- Set in the Sought After Coastal Village of Mundesley
- Four Double Bedrooms, All with En-Suites
- Ground Floor Bedroom for Versatile Living
- Driveway Parking and Double Garage
- Good Sized Rear Garden with Sea Views and Private Balcony
- Panoramic Sea Views from all Rear Windows
- No Onward Chain

Tenure: Freehold EPC Rating: Awaiting
Council Tax Band: E

£500,000



Ground Floor



First Floor



Garage

Total floor area 235.9 m² (2,539 sq.ft.) approx
This floor plan is for illustrative purposes only. It is not drawn to scale. Any measurements, floor areas (including any total floor area), openings and orientation are approximate. No details are guaranteed, they cannot be relied upon for any purpose and they do not form part of any agreement. No liability is taken for any error, omission or misstatement. A party must rely upon its own inspection(s). Powered by www.propertybox.io



Please note the marker reflects the postcode not the actual property

view this property online williamhbrown.co.uk/Property/NWM110007



Property Ref:
NWM110007 - 0005

1. MONEY LAUNDERING REGULATIONS Intending purchasers will be asked to produce identification documentation at a later stage and we would ask for your co-operation in order that there is no delay in agreeing the sale. 2. These particulars do not constitute part or all of an offer or contract. 3. The measurements indicated are supplied for guidance only and as such must be considered incorrect. Potential buyers are advised to recheck measurements before committing to any expense. 4. We have not tested any apparatus, equipment, fixtures or services and it is in the buyers interest to check the working condition of any appliances. 5. Where an EPC, or a Home Report (Scotland only) is held for this property, it is available for inspection at the branch by appointment. If you require a printed version of a Home Report, you will need to pay a reasonable production charge reflecting printing and other costs. 6. We are not able to offer an opinion either written or verbal on the content of these reports and this must be obtained from your legal representative. 7. Whilst we take care in preparing these reports, a buyer should ensure that his/her legal representative confirms as soon as possible all matters relating to title including the extent and boundaries of the property and other important matters before exchange of contracts.

William H Brown is a trading name of Sequence (UK) Limited which is registered in England and Wales under company number 4268443, Registered Office is Cumbria House, 16-20 Hockliffe Street, Leighton Buzzard, Bedfordshire, LU7 1GN. VAT Registration Number is 500 2481 05.

william h brown



01692 402861



NorthWalsham@williamhbrown.co.uk



16 Market Street, NORTH WALSHAM, Norfolk,
NR28 9BZ



williamhbrown.co.uk