



Guide Price
£190,000

Freehold

2x  1x  1x 

**Stainers Close, Ryde,
Isle of Wight, PO33**

OVER 60?

Secure this property
for up to **59% less!**

Pittis 
Helping you move forwards



Main features

- Terraced house with driveway to the front
- Split level rear garden
- Well maintained throughout
- Set on the edge of town and accessible to all local amenities
- An ideal first purchase or investment opportunity

Accommodation

GROUND FLOOR

Lounge / Dining Room : 15'4 x 12'0
(4.68m x 3.66m)

Kitchen: 12'4 x 8'8 (3.76m x 2.64m)

FIRST FLOOR

Landing

Bedroom 1: 12'7 x 8'7 (3.84m x 2.62m)

Bedroom 2 : 11'6 x 6'5 (3.51m x 1.96m)

Bathroom

OUTSIDE

Front Garden

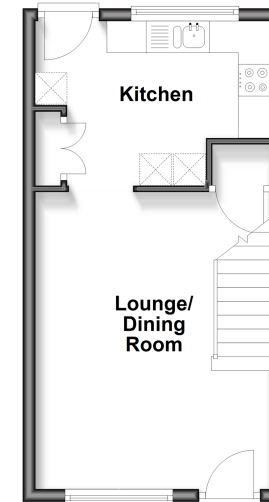
Driveway

Rear Garden

Shed

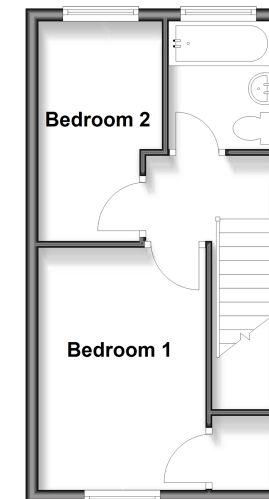
Ground Floor

Approx. 27.3 sq. metres (293.6 sq. feet)



First Floor

Approx. 27.3 sq. metres (293.6 sq. feet)



Call Ryde - 01983 564646 ■ pittis.co.uk

- Legal advice should be taken to verify fixtures/fittings, planning, alterations and/or lease details
- Appliances & services are untested, dimensions are approximate and floor plans are not to scale
- Through a Homewise Home For Life Plan people aged 60+ can secure this property for up to 50% less, by purchasing a Lifetime Lease.



60426876/20251106/RD/AGAN