



Great Titchfield Street, W1W

£1,650 Per week

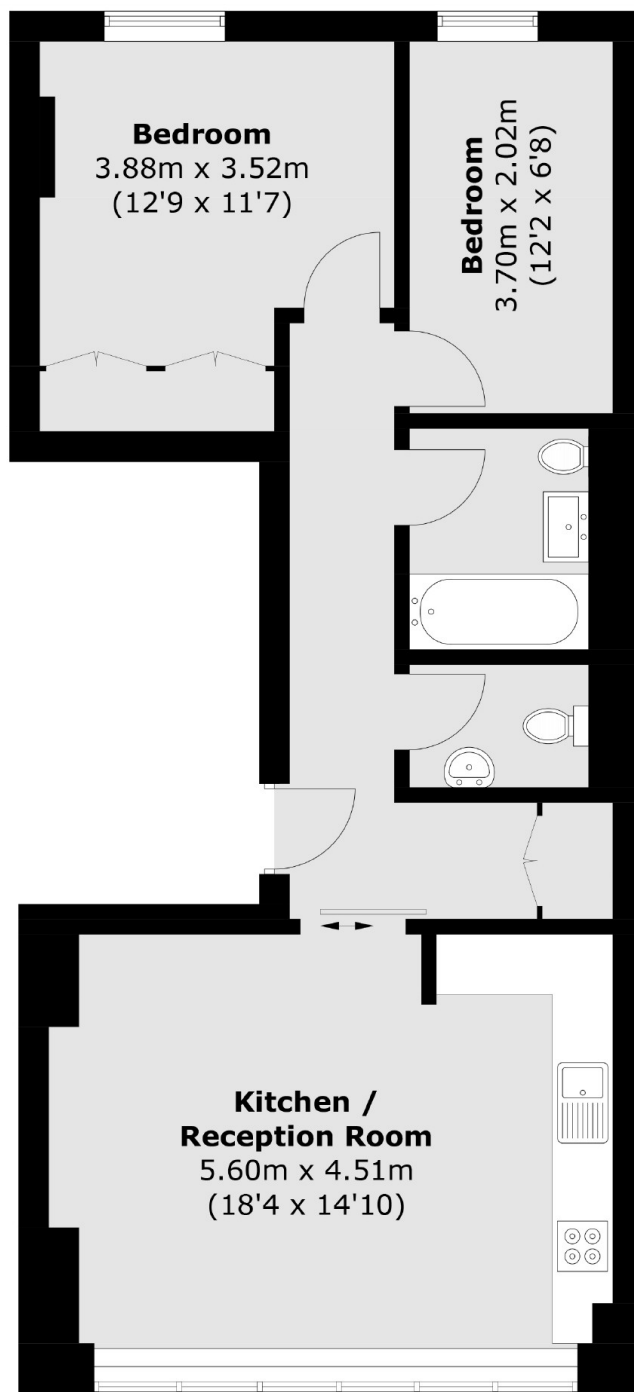
A unique and incredibly modern two double bedroom warehouse conversion apartment situated on the first floor of newly renovated former Printing House in the heart of Fitzrovia. The apartment has wooden oak floors throughout and spacious open plan kitchen/reception area.

Great Titchfield Street is conveniently and centrally located within half a mile of the world famous Oxford Street with a wide array of shops and department stores.

Features

- Warehouse Conversion
- Two Bedroom
- Modern Design
- Solid Oak Floors
- First Floor
- Spacious

Great Titchfield Street, London, W1W



Total area (approx.): 62.3 sq. m (670.6 sq. ft)