

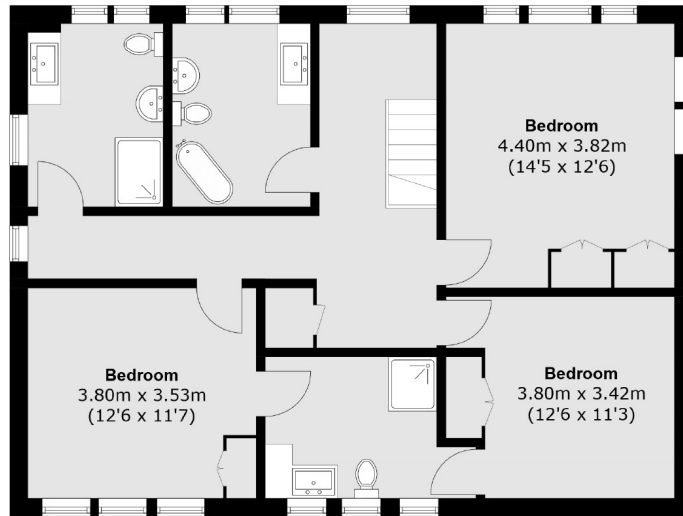


## Chatsworth Road, W5

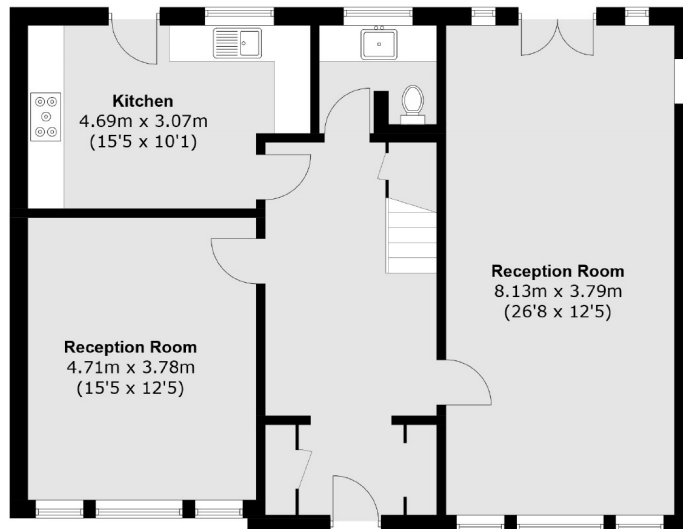
£1,212 pw (£5,250 pcm)

A large, detached, four bedroom house, in the Haymills area of Ealing. The house has a large double reception room, separate eat in kitchen/diner, utility room, three double bedrooms, three bathrooms, downstairs reception room/fourth bedroom and large garden.

The house is located in the Haymills area of Ealing, close to various transport links and amenities.



**First Floor**



**Ground Floor**

Total area (approx.): 171.8 sq. m (1,849.1 sq. ft)

Robertson Smith & Kempson Ealing Lettings  
1 The Broadway,  
London, W5 2NT  
020 8840 7885  
ealinglettings@robertsonsmithandkempson.co.uk

Energy Rating: C. We aim to make our particulars both accurate and reliable. However they are not guaranteed; nor do they form part of an offer or contract. If you require clarification on any points then please contact us, especially if you're traveling some distance to view. Please note that appliances and heating systems have not been tested and therefore no warranties can be given as to their good working order.