



nest
ESTATES

Hereward Place,

Stamford, PE9 2JA

£1,000,000

SUMMARY

- Four Bedroom Detached Family Home
- Double Garage & Off Road Parking For Multiple Cars
- Landscaped Rear Garden With Patio Area
- Open Plan Kitchen Living Dining Space & Utility Room
- Downstairs WC, Family Bathroom, Shower Room & En Suite
- Study & Living Room With Log Burner
- Town Centre Location
- High Specification















Situated in the heart of Stamford's vibrant town centre, this impressive four-bedroom detached family home offers generous and versatile accommodation arranged over two floors. The ground floor features a welcoming entrance hall, a study, a spacious living room with a log burner, and a stylish open-plan kitchen, living, and dining area complete with integrated appliances and Quartz worktops. There is also a utility room and a convenient downstairs WC.

Upstairs, the property boasts four well-proportioned bedrooms, including a luxurious master suite with a dressing room and en-suite shower room. Bedrooms two and three are connected by a Jack and Jill bathroom, while a modern family bathroom serves the remainder of the home.

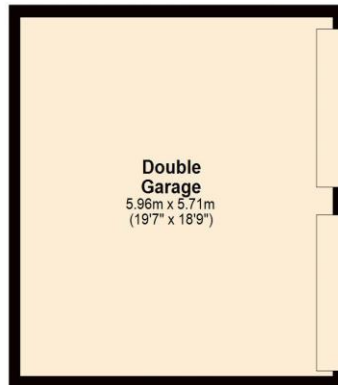
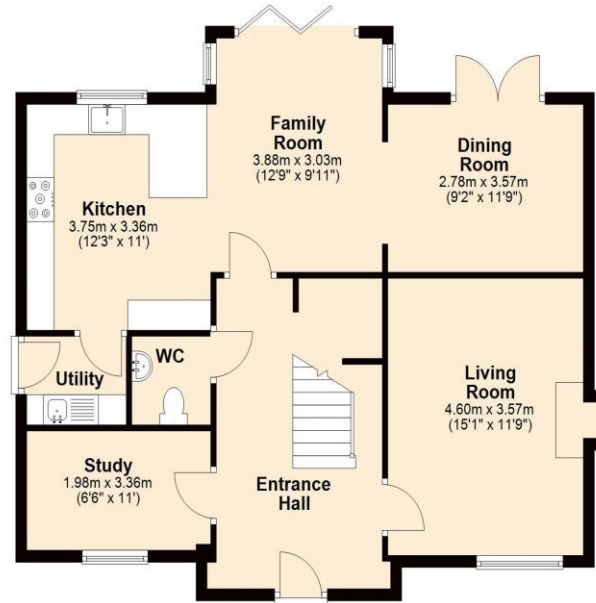
Externally, the home benefits from a double garage, ample off-road parking to the front, and a beautifully landscaped rear garden with a patio area — perfect for outdoor entertaining.

The historic market town of Stamford, with many shops, garden centres, churches, public houses and hotels to be found, along with indoor swimming pool, leisure centre and good medical facilities. Other recreational amenities in the area include several golf courses, Burghley House and Rutland Water between Stamford and Oakham for fishing, sailing and other pursuits. Not only benefiting from excellent primary & secondary schools nearby, education in the town is exceptional, provided by the renowned Stamford Endowed Schools. Additional state and independent schooling can be found in nearby market towns such as Bourne, Market Deeping and Oakham. High speed trains from Peterborough (only 15 miles away) to London Kings Cross take approximately 46 minutes; ideal for the commuter. The A1 road is only 1 mile away.

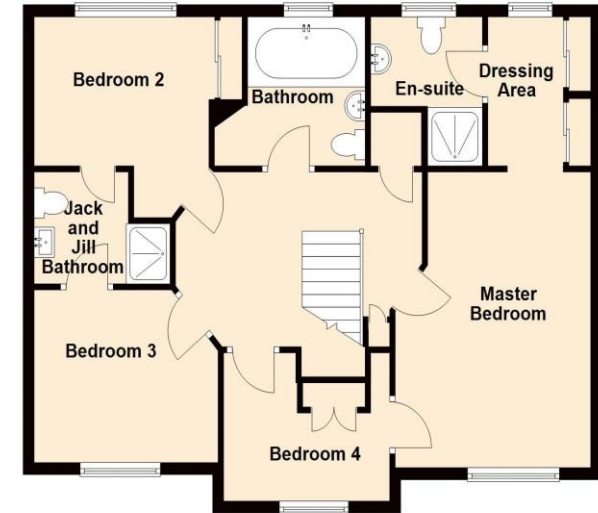
DISCLAIMER

Money Laundering Regulation: People who intend to purchase will be asked to show us documents to prove their identity. This will allow us to agree the sale and move forward with your purchase as quickly as possible. 2. We do our best to make sure our sales particulars are as accurate and reliable as we can. However, they are a general guide to the property and if something is particularly important to you, we will be happy to check information for you. As regards measurements, the approximate room sizes are intended as a general guide. You must verify dimensions of rooms yourself before ordering any carpets or furniture. 3. As regards services, we have not tested the services or any equipment including appliances in this property. We advise prospective buyers to carry out their own survey, service report before making their final offer to purchase. 4. This sales information has been issued in good faith. However, it does not constitute representation of fact or form part of any offer or contract. The information referred to in these particulars should be independently verified by any prospective buyer or tenant. Neither Nest Estates nor any of its employees has the authority to make or give any representation or warranty whatever in relation to this property.

Ground Floor
Approx. 115.4 sq. metres (1242.1 sq. feet)



First Floor
Approx. 77.4 sq. metres (833.2 sq. feet)



Total area: approx. 192.8 sq. metres (2075.4 sq. feet)