



Rowhurst Avenue, Addlestone, KT15 1NF



Situated in a peaceful residential road with views over a central green, this property provides a tranquil setting while still being conveniently located. The ground floor features a spacious living room, perfect for relaxing, and a modern, well-equipped kitchen. The property has recently been redecorated throughout.



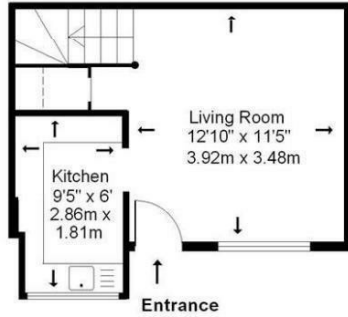
Upstairs, you'll find a generously sized double bedroom, along with a tiled bathroom featuring a white suite and a shower over the bath for added convenience.

Additional benefits include double glazing,, ample residents' parking, and a small front garden.

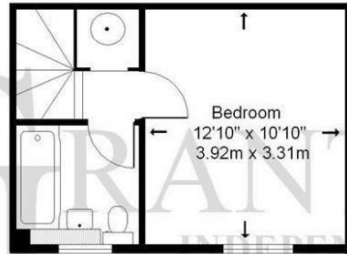
Property available from the 15th June



## Ground Floor



## First Floor



Not to scale

**Approximate Gross Internal Floor Area: 44m sq (473sq ft)**

Whilst every attempt has been made to ensure the accuracy of this floor plan, room sizes and measurements are approximate and accordingly should not be relied upon for carpets and furnishings. These plans are for representation purposes only and no responsibility can be given for errors and omissions.

EPC Rating: 74 C



Grants Homes 60 Church Street, Weybridge, Surrey, KT13 8DL  
T: 01932 841020 E: [lettings@grantshomes.co.uk](mailto:lettings@grantshomes.co.uk)

