





Stanwick Drive

Cheltenham

Spacious one-bedroom bungalow in Wymans Brook with no onward chain, large garden, summer house, off-street parking, practical layout, and extended utility area. Ideal for downsizers or first-time buyers.

Council Tax band: B

Tenure: Freehold

EPC Energy Efficiency Rating: C

EPC Environmental Impact Rating: C

- One Bedroom Bungalow
- NO ONWARD CHAIN
- Potential For Extension (Subject to Planning)
- Large Private Garden
- Spacious Summer House
- Quiet Cul-De-Sac Location
- Useful Rear Porch
- Separate Utility Room
- Ample Off Road Parking





Ground Floor Building 1



Ground Floor Building 2

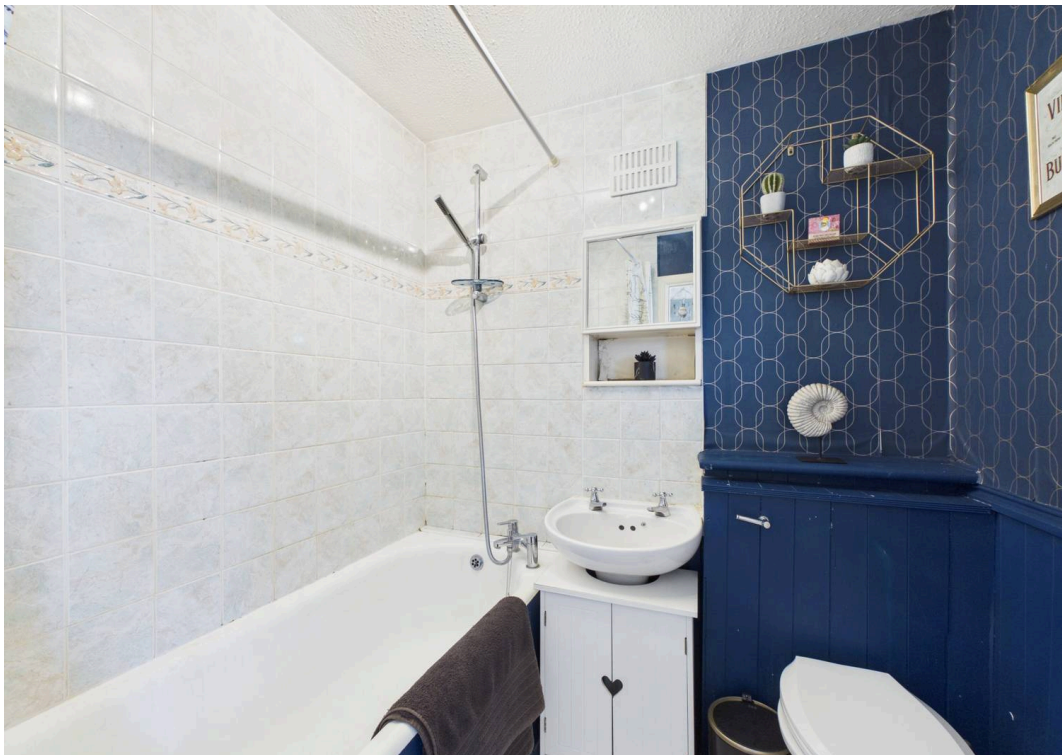
Approximate total area⁽¹⁾
650 ft²
60.5 m²

(1) Excluding balconies and terraces

Calculations reference the RICS IPMS 3C standard. Measurements are approximate and not to scale. This floor plan is intended for illustration only.

GIRAFFE360







Move Estate Agents Cheltenham

1 The Clarence Clarence Parade, Cheltenham - GL50 3NY

01242 257333

cheltenham@move.uk.net

move.uk.net/

move
Property Sales & Lettings