



Gloucester Terrace, W2

£4,333 Per week

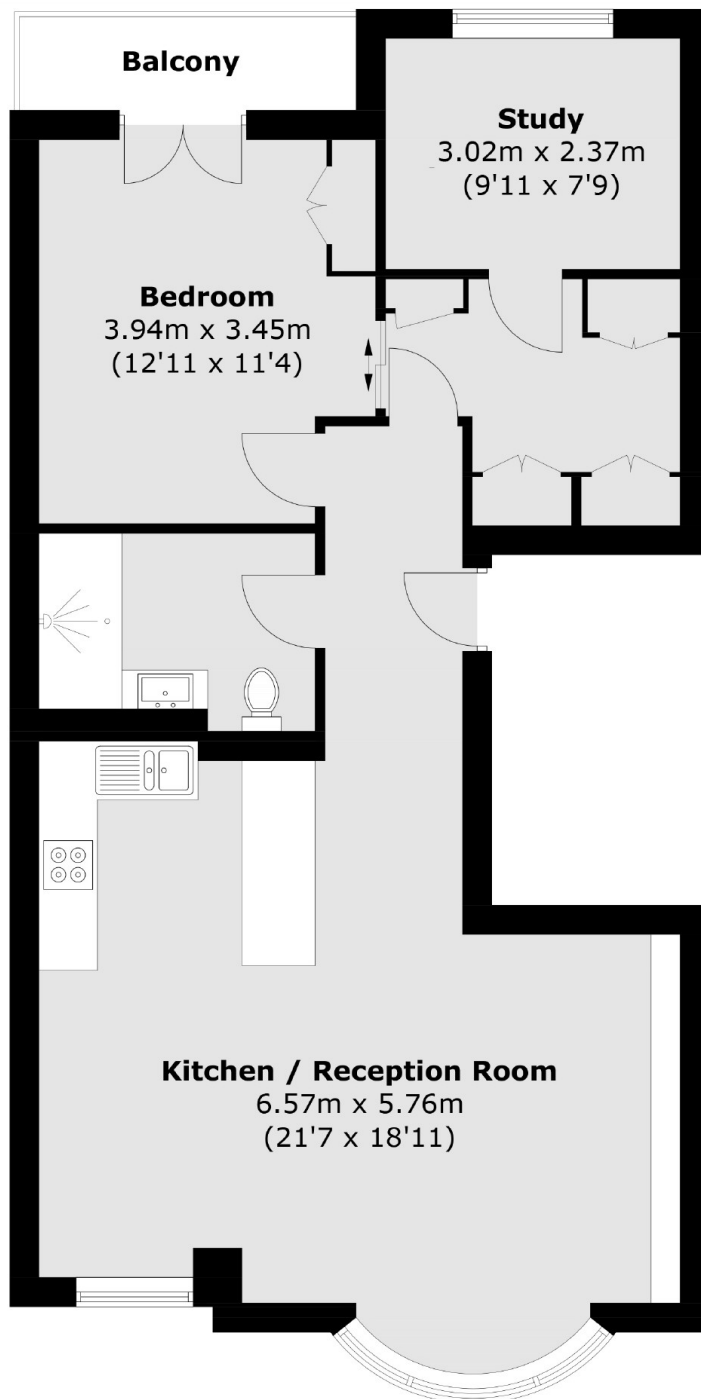
A fantastic 2 bedroom apartment in wonderful condition, recently refurbished throughout boasting ample storage with a walk in wardrobe and private balcony. Tastefully furnished to a high standard this property is ready to move into. Only moments away from Paddington station for transport links.

Features

Recently Refurbished
Beautifully Furnished
Wooden flooring
Private Balcony
Lift

Gloucester Terrace is just a short walk from Hyde Park and offers excellent transport links via Lancaster Gate Underground and Paddington Mainline and Underground Station.

Gloucester Terrace, London, W2



Total area (approx.): 71.9 sq. m (774.5 sq. ft)
Balcony area (approx.): 3.3 sq. m (35.5 sq. ft)