



Eve Road, TW7

£995,000

Dexters



Eve Road, TW7

Tucked away in one of Old Isleworth's most charming spots, is this beautifully presented home. The house blends period character with stylish modern living and an incredible riverside setting on the peaceful River Crane.

Designed with both family life and entertaining in mind, the ground floor features a welcoming entrance hall, spacious double reception room and contemporary kitchen opening onto a stunning garden. Extending over 100 feet, the garden offers multiple seating areas, a children's playhouse and a beautiful riverside terrace overlooking the peaceful River Crane. There is also the option to purchase the moored boat and kayak. Upstairs are two generous double bedrooms and a stylish family bathroom with separate bath and walk-in shower. A further bedroom on the second floor provides an ideal guest room or home office, while the top floor hosts a superb principal bedroom with far-reaching views, eaves storage and a modern en suite shower room. A much-loved home offering character, flexible living space and a truly unique riverside setting. There is also potential to extend the kitchen into the side return, subject to the usual permissions.

Old Isleworth offers a charming village feel with a strong sense of community, farmers markets, Georgian architecture and riverside walks. Richmond Station is accessible on foot with fast connections to Waterloo. The area has excellent schools, The Blue School and St Mary's Catholic Primary School.

Features

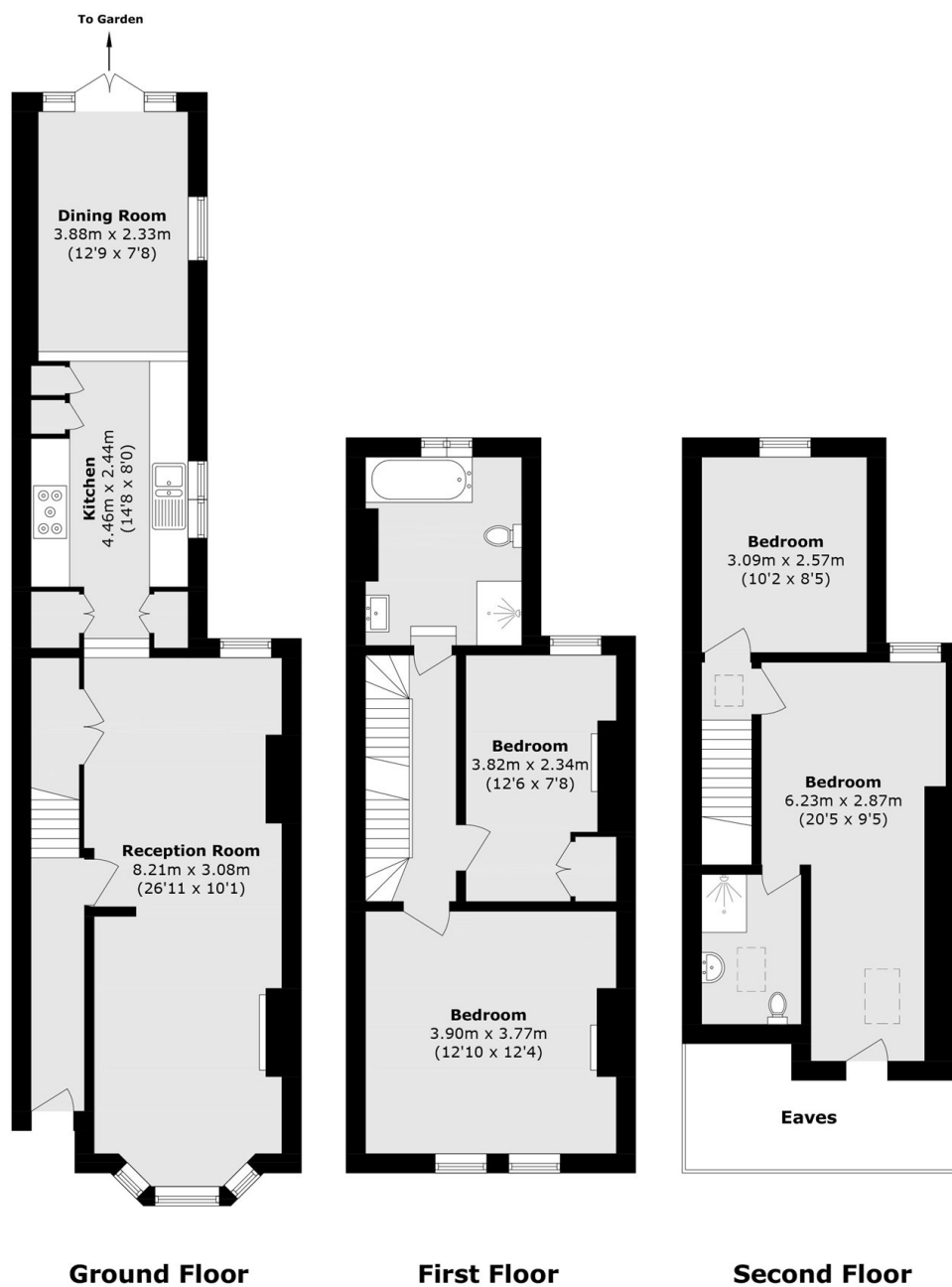
- Four Bedrooms
- Two Bathrooms
- Dining Room
- Further Extension Potential
- Large Garden
- River Backing







Eve Road, Old Isleworth, TW7



Total area (approx.): 119.4 sq. m (1285.2 sq. ft)
(Excluding Eaves)