



CARVER
RESIDENTIAL
Sales · Lettings · Property Management

Ferguson Close
Northallerton, DL7 8EZ

Offers in the region of £169,950

House - Terraced
2 Bedroom/s
1 Bathroom/s

A well presented modern two bedroomed end terraced property with two off street parking spaces and enclosed stone flagged patio garden situated within a cul de sac location. The property benefits from gas fired central heating and double glazing. The accommodation includes a reception hall with under stairs storage cupboard and wood flooring continuing to the spacious living room, fitted kitchen with granite work tops, lovely conservatory opening to and over looking the rear garden. To the first floor there are two bedrooms, with the master bedroom having fitted with wardrobes. The shower room has been refurbished and fitted with a double walk in shower and matching suite with vanity storage. Externally there are two parking spaces, front garden and an enclosed rear stone flagged patio garden. The property is located in an excellent location with in easy reach of the town centre and railway station.





- Well presented two bed roomed end terraced home situated in a cul de sac location
- Modern fitted kitchen with granite work surfaces
- Master bedroom with fitted wardrobes
- Enclosed low maintenance stone flagged patio garden
- Excellent location with easy access to the town centre and railway station
- Spacious living room and conservatory
- Modern shower room with walk in double shower
- Gas fired central heating and double glazing
- Two off street parking spaces

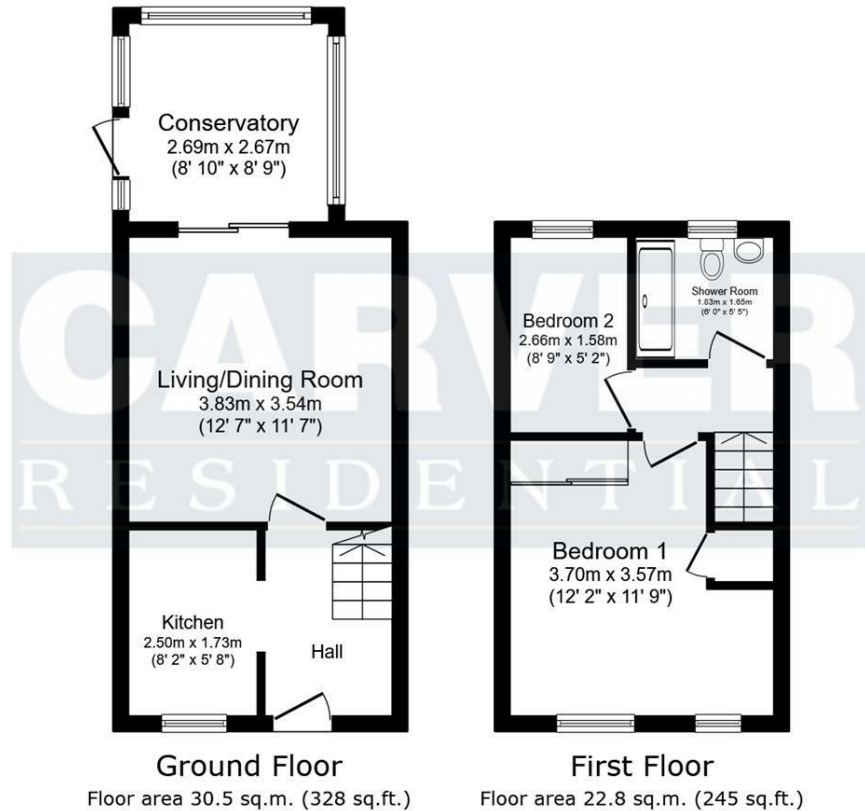
GENERAL INFORMATION

Tenure: Freehold

Services: Gas central heating, mains electric, water and drainage.

Double glazing.

Local Authority: North Yorkshire Band B



Energy Efficiency Rating		
	Current	Potential
Very energy efficient - lower running costs		
(92 plus) A		
(81-91) B		
(69-80) C		
(55-68) D		
(39-54) E		
(21-38) F		
(1-20) G		
Not energy efficient - higher running costs		
England & Wales	EU Directive 2002/91/EC	

Total floor area: 53.2 sq.m. (573 sq.ft.)

This floor plan is for illustrative purposes only. It is not drawn to scale. Any measurements, floor areas (including any total floor area), openings and orientations are approximate. No details are guaranteed, they cannot be relied upon for any purpose and do not form any part of any agreement. No liability is taken for any error, omission or misstatement. A party must rely upon its own inspection(s). Powered by www.Propertybox.io

We can search 1,000s of mortgages for you It could take just 15 minutes with one of our specialist advisers:
 Call: 01325 380088. Visit: Any of our Offices. Online: www.mortgageadvicebureau.com/carver

Mortgage Advice Bureau Your home may be repossessed if you do not keep up repayments on your mortgage. There will be a fee for mortgage advice. The actual amount you pay will depend upon your circumstances. The fee is up to 1% but a typical fee is 0.3% of the amount borrowed

MAB 6202



These particulars do not constitute any part of an offer or contract. None of the statements contained in these particulars are to be relied on as statements or representations of fact and any intending purchaser must satisfy himself by inspection or otherwise to the correctness of each of the statements contained in these particulars. The vendor does not make or give, and neither Nick & Gordon Carver Residential or Commercial, Nick & Gordon Carver, nor any person in their employment has any authority to make or give any representation or warranty whatever in relation to this property



14 Duke Street, Darlington
Co Durham, DL3 7AA
01325 357807
sales@carvergroup.co.uk

63 Dalton Way, Newton Aycliffe
Co Durham DL5 4NB
01325 320676
aycliffe@carvergroup.co.uk

41 Market Place, Richmond
North Yorkshire, DL10 4QL
01748 825317
richmond@carvergroup.co.uk

219 High Street, Northallerton
North Yorkshire DL7 8LW
01609 777710
northallerton@carvergroup.co.uk