

for sale

offers in the region of **£265,000**



Essex Street Birmingham B5 4BX

Situated in the heart of Birmingham's vibrant Southside, this beautifully presented one-bedroom apartment in the sought-after South Central development on Essex Street offers modern city living at its finest.

Essex Street Birmingham B5 4BX

Approach/Outside

Residents are welcomed via a secure communal entrance with convenient access to all floors.

Open Plan Living

21' 10" x 10' 10" (6.65m x 3.30m)

The apartment features a sleek, modern kitchen designed to maximise both style and functionality. Its open-plan layout allows it to flow seamlessly into the living space, creating an inviting area perfect for cooking, dining, and entertaining.

Fully equipped with integrated appliances, including an oven, hob, extractor fan, fridge-freezer and dishwasher the kitchen offers all the essentials for everyday living.

Lounge area with double glazed window and wall mounted heater.

Laminate flooring throughout.

Bedroom

15' 10" x 9' 7" (4.83m x 2.92m)

Double glazed window, wall mounted heater, carpet flooring.

Bathroom

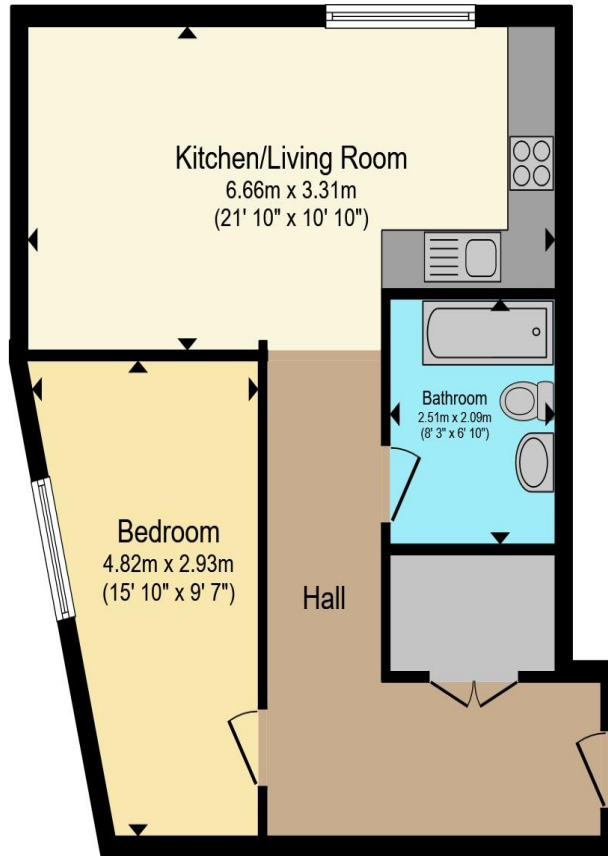
8' 3" x 6' 10" (2.51m x 2.08m)

The bathroom is well presented and fitted with a modern suite comprising a panelled bath with shower over, low-level WC, wash-hand basin, tiled.









Total floor area 53.4 m² (574 sq.ft.) approx

This floor plan is for illustrative purposes only. It is not drawn to scale. Any measurements, floor areas (including any total floor area), openings and orientation are approximate. No details are guaranteed, they cannot be relied upon for any purpose and they do not form part of any agreement. No liability is taken for any error, omission or misstatement. A party must rely upon its own inspection(s). Powered by www.propertybox.io



To view this property please contact Connells on

T 0121 212 0800
E birminghamcity@connells.co.uk

145 Great Charles Street Queensway
 BIRMINGHAM B3 3LP

Property Ref: DIG113681 - 0006

Tenure:Leasehold EPC Rating: B

Council Tax Band: A Service Charge: Ask Agent

Ground Rent: Ask Agent

view this property online
connells.co.uk/Property/DIG113681

This is a Leasehold property. We are awaiting further details about the Term of the lease. For further information please contact the branch. Please note additional fees could be incurred for items such as Leasehold backs.

1. MONEY LAUNDERING REGULATIONS Intending purchasers will be asked to produce identification documentation at a later stage and we would ask for your co-operation in order that there will be no delay in agreeing the sale. 2. These particulars do not constitute part or all of an offer or contract. 3. The measurements indicated are supplied for guidance only and as such must be considered incorrect. Potential buyers are advised to recheck measurements before committing to any expense. 4. We have not tested any apparatus, equipment, fixtures, fittings or services and it is in the buyers interest to check the working condition of any appliances.

Connells Residential is registered in England and Wales under company number 1489613, Registered Office is Cumbria House, 16-20 Hockliffe Street, Leighton Buzzard, Bedfordshire, LU7 1GN. VAT Registration Number is 500 2481 05.

see all our properties at www.connells.co.uk | www.rightmove.co.uk | www.zoopla.co.uk