



BARLBY ROAD, W10

£800,000

Sixth Floor Apartment
Open-Plan
Sleek Modern Kitchen
Two Terraces
24-Hour Porter
CGI-Styled

@marshandparsons
marshandparsons.co.uk

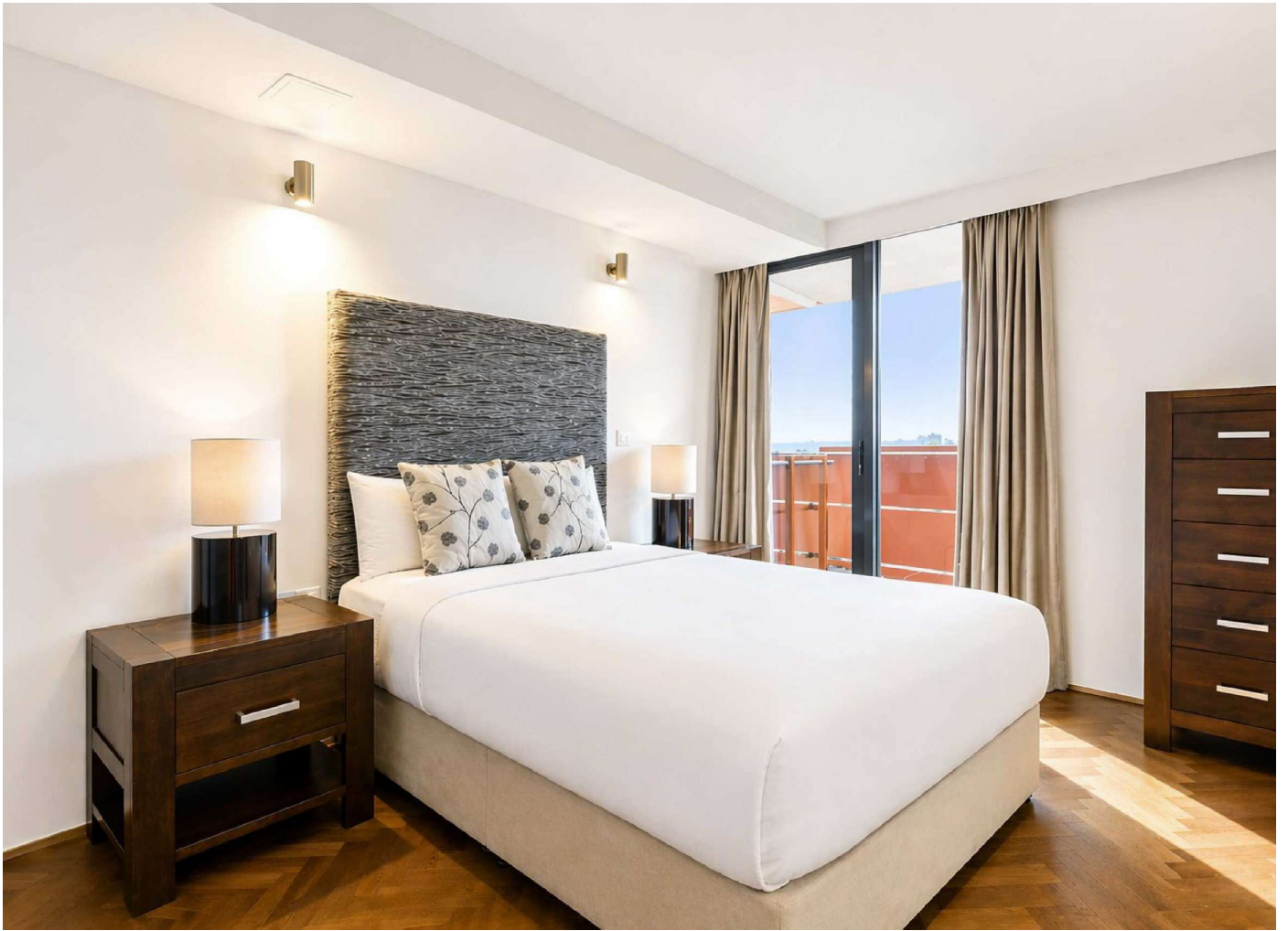
MARSH &
PARSONS

ABOUT THE PROPERTY

Set on the sixth floor of a modern Barlby Road development, this spacious two-bedroom, two-bathroom apartment offers over 1,000 sq ft of bright, stylish living space, a large private balcony, wide-reaching views, and strong energy efficiency.

Barlby Road is just 0.4 miles from Ladbroke Grove station, with quick links to Portobello Road, Notting Hill, and Westfield London. Nearby parks provide peaceful green space. This modern apartment offers spacious living, outdoor space, and impressive views in a lively W10 location.







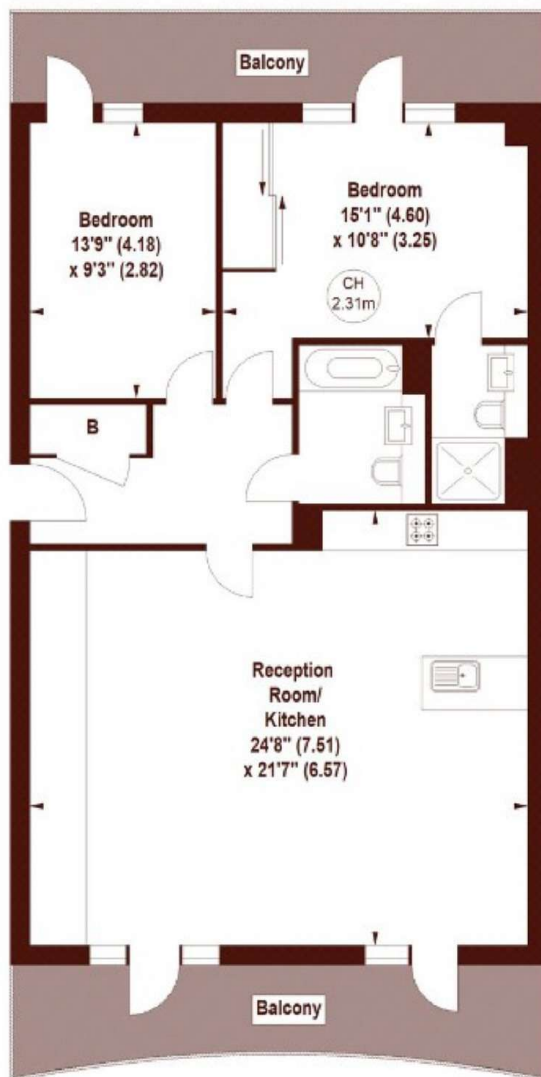


STEP INSIDE BARLBY ROAD

The Ink Building, Barlby Road, W10

APPROX. GROSS INTERNAL FLOOR AREA 1001 SQFT / 92.99 SQM

Key :
CH - Ceiling Height



SIXTH FLOOR

Not to scale, for guidance only and must not be relied upon as a statement of fact.
All measurements and areas are approximate only

North Kensington
020 7313 8350

Energy Rating: C We aim to make our particulars both accurate and reliable. However, they are not guaranteed; nor do they form part of an offer or contract. If you require clarification on any points then please contact us, especially if you're traveling some distance to view. Please note that appliances and heating systems have not been tested and therefore no warranties can be given as to their good working order

MARSH &
PARSONS