



QUEENSDALE ROAD, W11

£6,000 per month

Two Double Bedrooms
Spacious Reception Room
Separate Dining Room
Two Modern Bathrooms



ABOUT THE PROPERTY

This stylish house is arranged over three floors and is positioned on one of Holland Park's finest roads. The ground floor of this wonderful house offers a spacious dining room, with separate kitchen and stylish shower room. The first floor features a beautiful double reception with wood flooring and is flooded with natural light. The property further benefits from a large master bedroom with excellent storage and a second double bedroom along with a modern family bathroom.

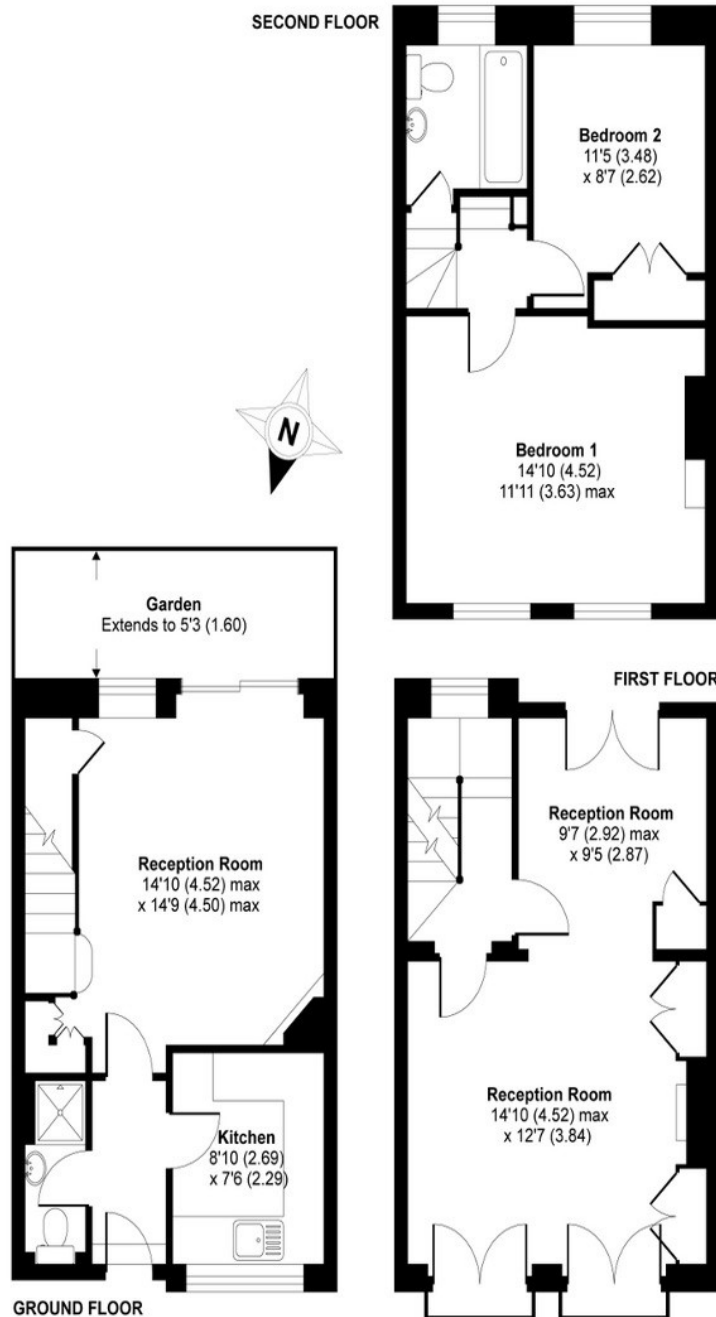
Queensdale Road is a short stroll from the boutique style cafes and shops of Clarendon Cross and also the local amenities along Holland Park Avenue, including Holland Park Central Line station and the London Westfield.



STEP INSIDE QUEENSDALE ROAD

Queensdale Road W11

APPROX. GROSS INTERNAL FLOOR AREA 1035 SQFT / 96.1 SQM



Copyright nichecom.co.uk 2006 Produced for Anscombe & Ringland REF : 2851QUPR

Holland Park
020 7605 6895

Energy Rating: We aim to make our particulars both accurate and reliable. However, they are not guaranteed; nor do they form part of an offer or contract. If you require clarification on any points then please contact us, especially if you're traveling some distance to view. Please note that appliances and heating systems have not been tested and therefore no warranties can be given as to their good working order

MARSH &
PARSONS