



## Birch Close, SE15

£2,800 Per calendar month

Located in the heart of Peckham Rye is this stunning three bed mid-terrace house with tonnes of natural light.

The property is on a secluded square, just seconds away from vibrant Rye Lane with its wide selection of independent shops, cafes, restaurants, a cinema. Peckham offers a range of artsy bars, pubs and clubs for a great night out. Within a few minutes you can be at Peckham Rye Station that offer quick connections into London Bridge, Victoria, and Overground to Clapham and East London, as well as numerous bus routes. Peckham Rye Park with its open spaces and ornamental gardens is just a few seconds walk away, while popular Dulwich Park is only a little further in the opposite direction.

### Features

- Close To Station
- Private Garden
- Large Living Area
- Modern Kitchen
- Stunning all around
- Available Oct 2024

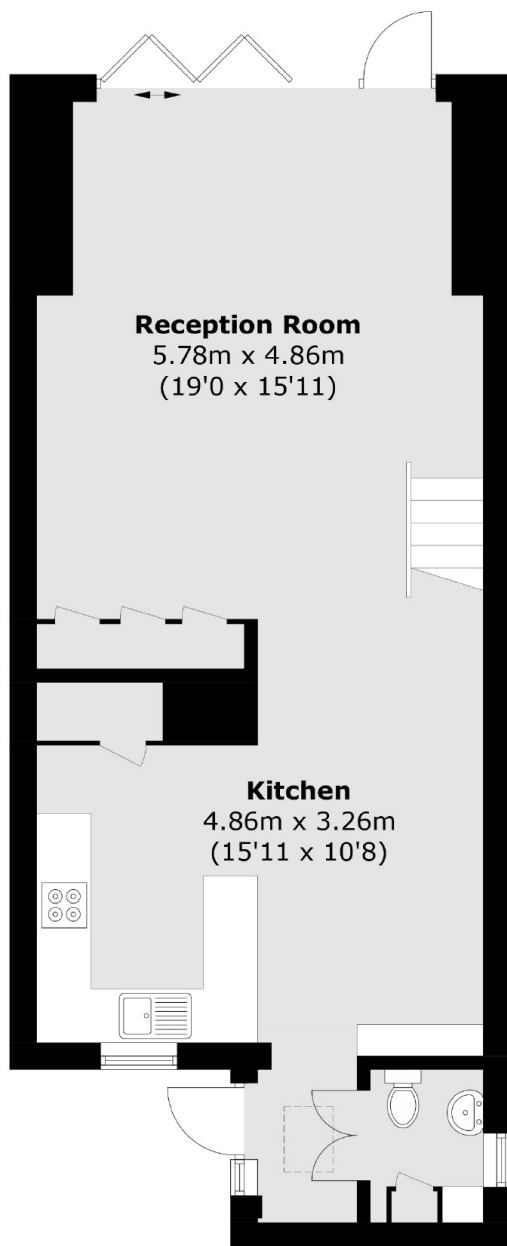


## Birch Close, SE15

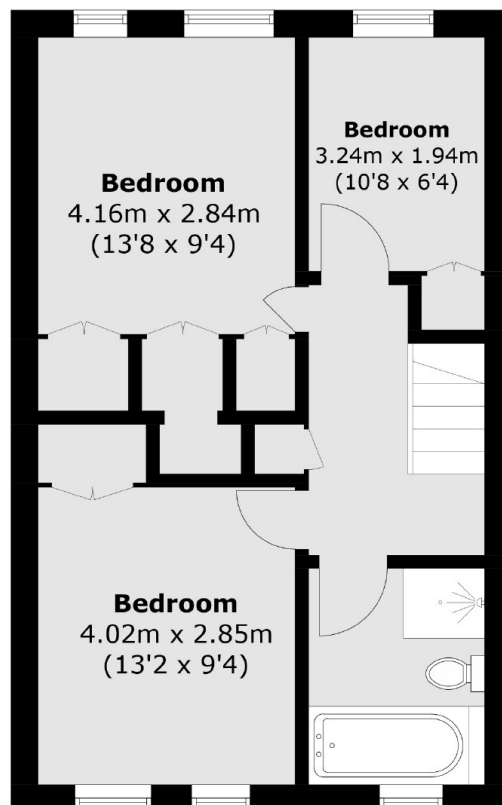
As you walk into the house you have two floors. The downstairs comprises the large lounge and a semi open plan kitchen with walk in pantry storage and modern kitchen. The lounge backs onto a conservatory that opens onto the secluded paved garden with brick shed. Upstairs you have two double bedrooms that can easily fit a king size bed and chest of drawers, both with built in cupboards, a large single room excellent for a nursery or study room and your four piece family bathroom with separate walk in rainfall shower.



# Birch Close, London, SE15



**Ground Floor**



**First Floor**

Total area (approx.): 96.9 sq. m (1,043 sq. ft)