



Mullins Place, SW4

£350,000

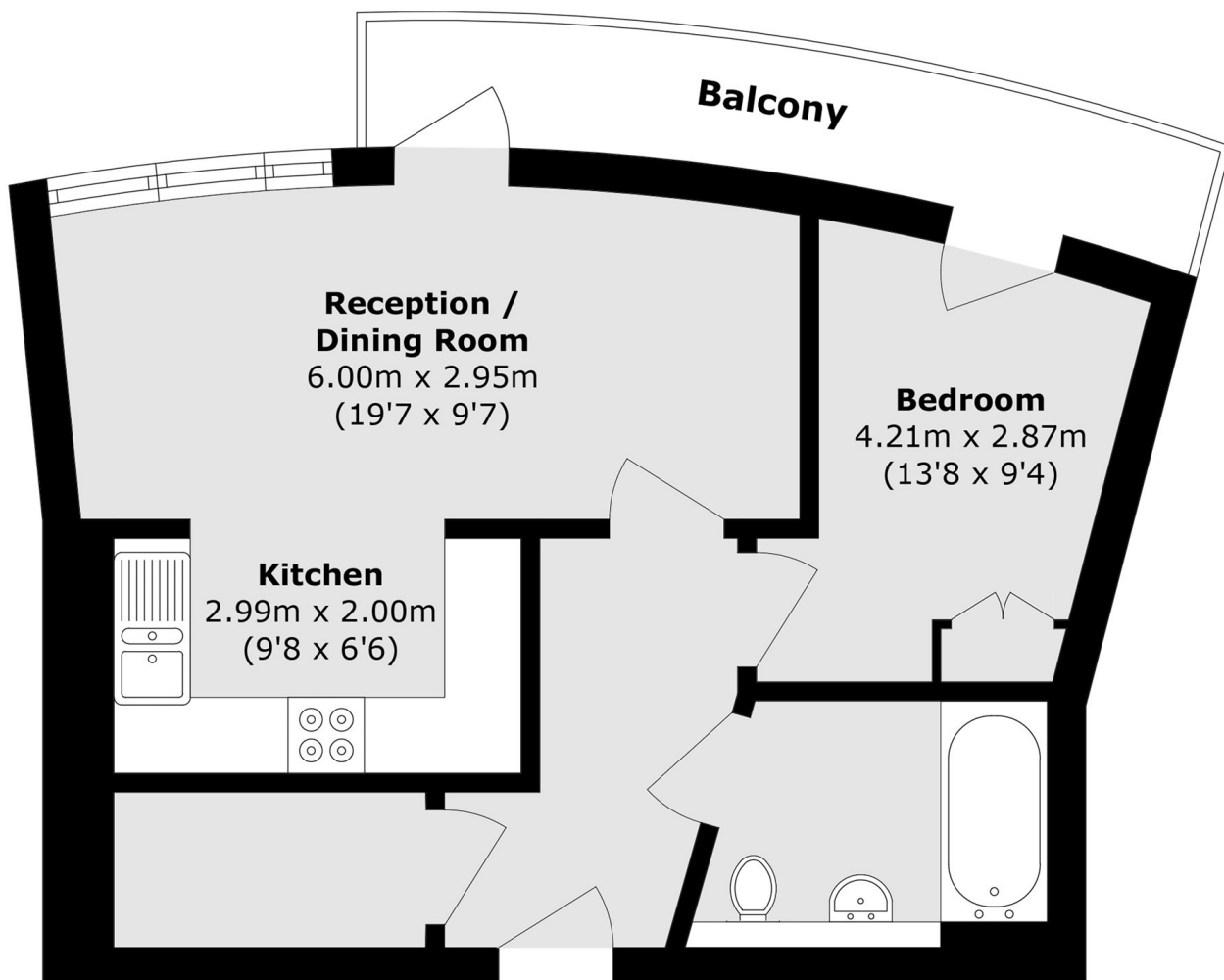
This superb top-floor, contemporary apartment is situated within a desirable development and is presented in excellent order throughout. Comprising a naturally bright open plan reception room with a well-equipped kitchen and adjoining outside space (terrace), a double bedroom with fitted wardrobes, and a modern bathroom. Offered to the market with a long lease and no onward chain. Furniture has been added digitally.

Mullins Place is well situated for the many local boutique shops, restaurants and bars of Abbeville Village, and the green open spaces of Clapham Common. Clapham Common & Clapham South stations are just a short walk away.

Features

- Top-Floor Apartment
- Open Plan Reception Room
- Modern Kitchen
- Double Bedroom
- Large Terrace
- Chain Free

Mullins Place, Clapham, SW4



Total area (approx.): 45.9 sq. m (494.1 sq. ft)

Balcony area (approx.): 8.7 sq. m (93.6 sq. ft)