



Church Meadow, KT6

£4,095 Per calendar month

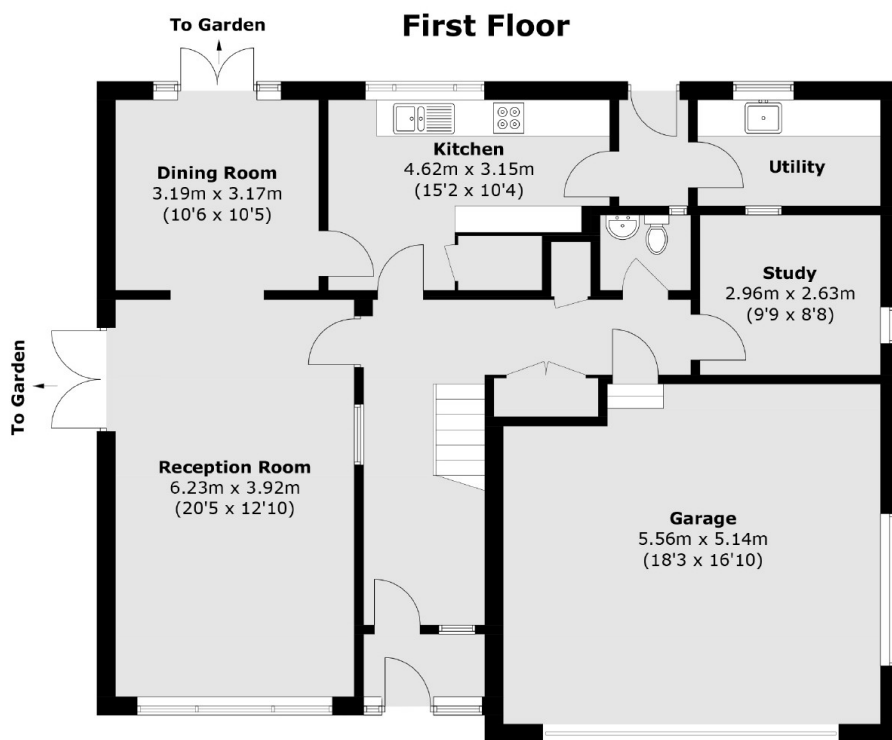
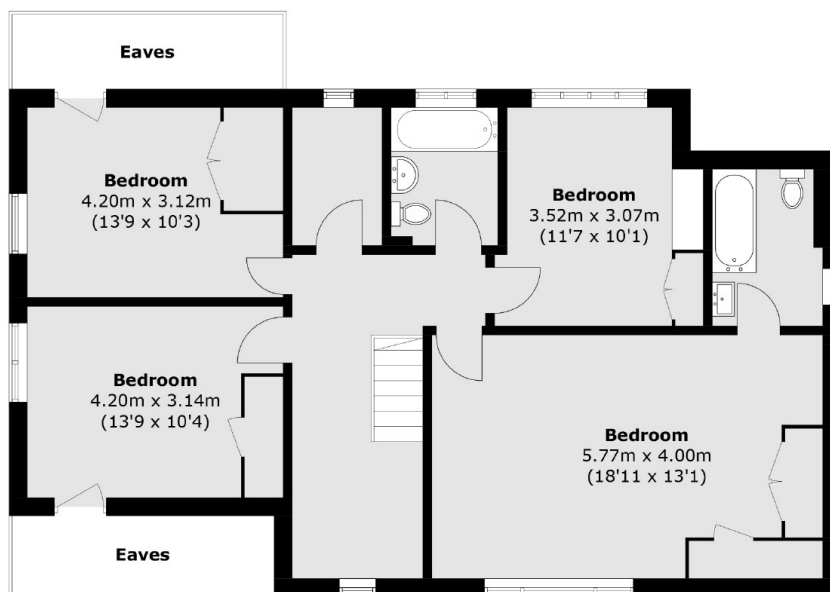
A large detached family home set in a quiet and sought after cul-de-sac. This spacious home has a large reception room, a dining room, a kitchen/ breakfast room, a utility room, four double bedrooms, two bathrooms (one en suite) and a wonderful private rear garden. There is a driveway for off street parking and a garage.

Church Meadow is a peaceful cul-de-sac located in Long Ditton, just over a mile from the River Thames, Surbiton town centre and the train station.

Features

- Four Double Bedrooms
- Two Receptions
- Separate Utility
- Study
- Double Garage
- Driveway

Church Meadow, Surbiton, KT6



Ground Floor

Total area (approx.): 219.6 sq. m (2,363.7 sq. ft)
(Including Garage & Excluding Eaves)