



Flat 26, The Beeches, Sandwich Road

Manchester



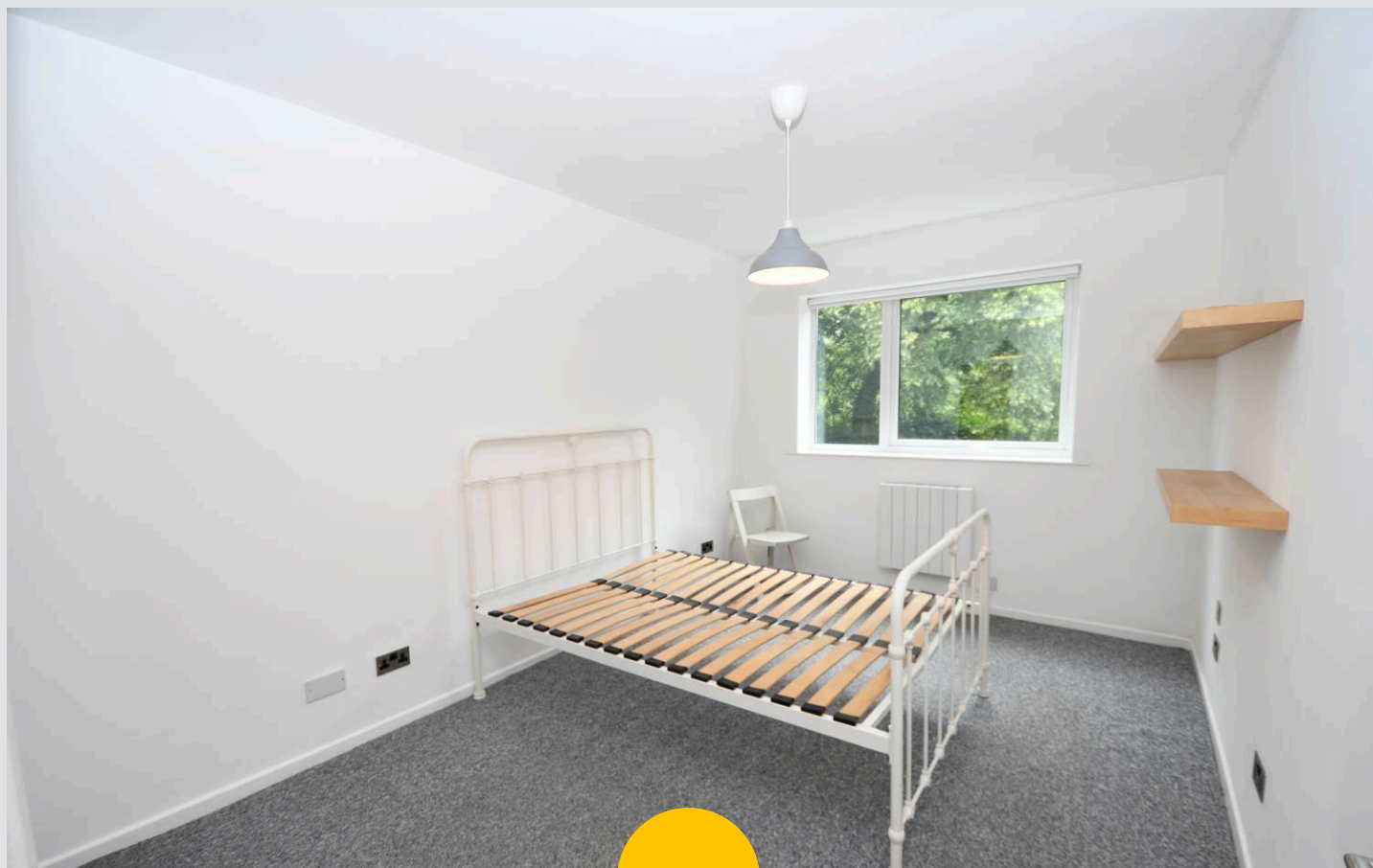
Offers Over £140,000

The Beeches, Sandwich Road

Ellesmere Park

Tenure: Leasehold

- Gorgeous First Floor One Bedroom Apartment
- Huge 14FT Master Bedroom With Walk-In-Wardrobe
- Benefits From Residential and Visitor Parking
- Immaculate Condition Throughout
- Four Piece Modern Bathroom Suite
- Stylish Fitted Kitchen With Ample Storage
- Shared Balcony Space
- Walking Distance to Monton Village and Salford Royal Hospital
- Close to an Array of Amenities and Surrounded by Excellent Transport Links



HILLS



Lounge/Diner

17' 8" x 10' 6" (5.39m x 3.20m)

Kitchen

9' 4" x 8' 1" (2.84m x 2.46m)

Bedroom

13' 7" x 9' 6" (4.15m x 2.89m)

Walk-In-Wardrobe

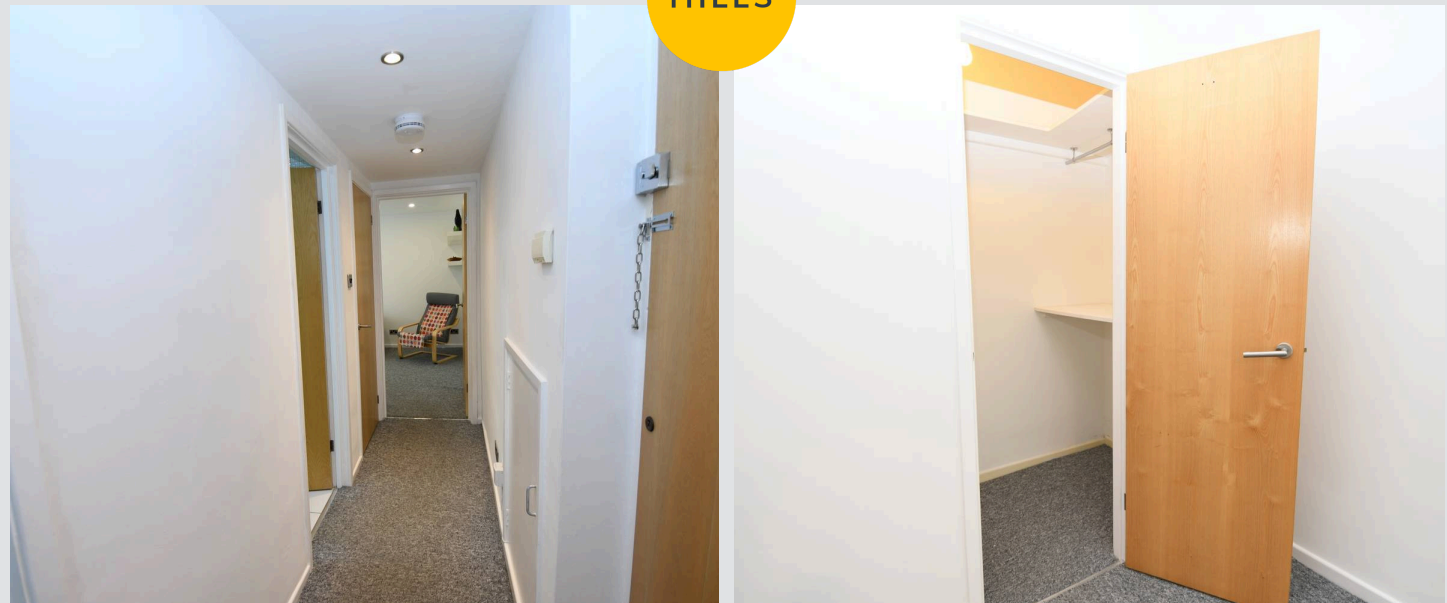
6' 0" x 3' 1" (1.82m x 0.95m)

Bathroom

8' 6" x 6' 10" (2.58m x 2.08m)



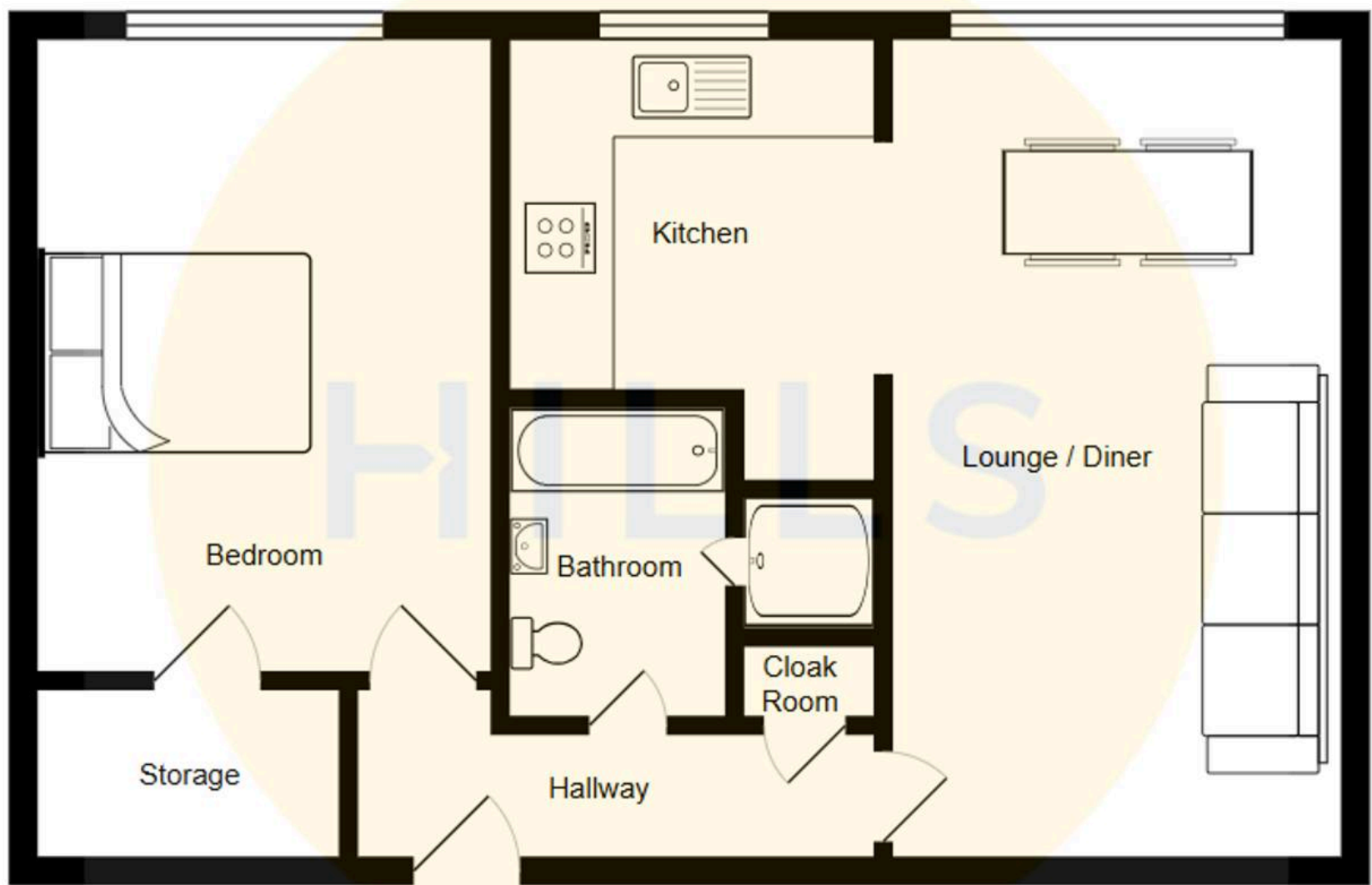
HILLS





HILLS







Hills | Salfords Estate Agent

Hills Residential, Sentinel House Albert Street – M30 0SS

0161 707 4900

sales@hills.agency

www.hills.agency/



By law, we are required to conduct anti-money laundering checks on all potential buyers and sellers. In line with HMRC guidelines, our trusted partner, Coadjute, will securely manage these checks on our behalf. A non-refundable fee of £45 + VAT per person will apply, and Coadjute will handle the payment. Once an offer is accepted, Coadjute will send a secure link for you to complete the biometric checks. These checks must be completed before we can send the memorandum of sale to all parties. PLEASE NOTE: The Agent has not tested any equipment, fixtures, fittings or services so cannot verify that they are in working order or fit for the purpose. References to the properties tenure are based on information supplied by the seller. You are advised to check the availability of this property before travelling any distance to view. Every effort has been made to ensure these particulars are correct and not misleading but their accuracy is not guaranteed nor do they form part of any contract.