

FREEHOLD



Flat - Purpose Built (EPC Rating: D)

6 LAVELLE DRIVE, COATBRIDGE, ML5 3QN

Fixed price

£122,000

FEATURES

- 2 bedrooms
- New Windows / Front Door
- Off-street parking
- Close to local schools
- 1 bathroom
- rear garden
- Quiet residential area
- Easy access to transport links



**SWEET
HOME**



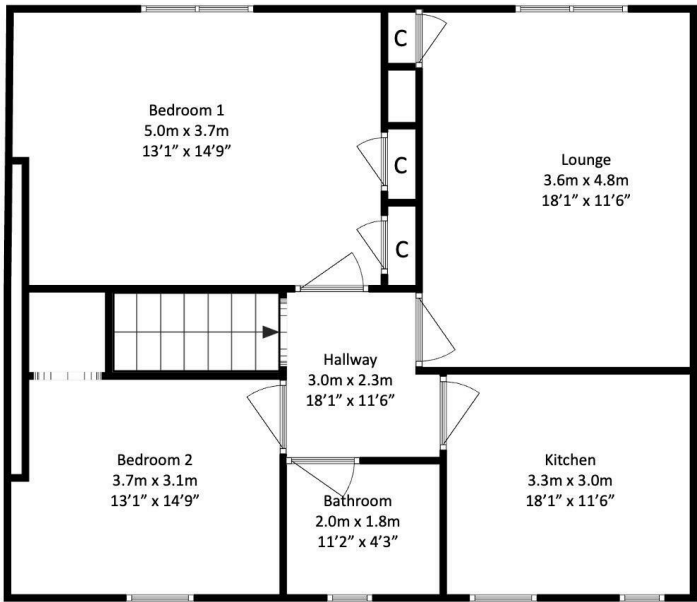
2 Bedroom Flat - Purpose Built located in Coatbridge

Caroline Morrison of Sweet Home Scotland is pleased to bring to market this two bedroom upper cottage flat in Lavelle Drive, Coatbridge, this property offers a comfortable living space of 797 square feet. Ideal for someone looking to put their own stamp on a property.

The house is well-designed, providing ample room for relaxation and entertaining. The layout is both practical and inviting, ensuring that every corner of the home is utilised effectively. Natural light floods the living areas.

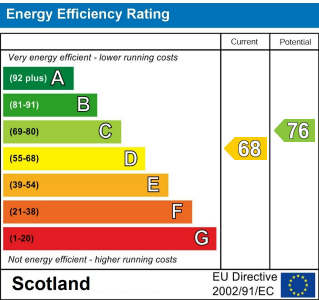
Situated in a friendly neighbourhood and what do they say "Location Location Location"? This property benefits from convenient access to local amenities, including shops, schools, and parks, making it an excellent choice for those who value community living. The surrounding area is known for its picturesque landscapes and offers a variety of recreational activities, perfect for outdoor enthusiasts.

This house on Lavelle Drive presents a wonderful opportunity for anyone looking to settle in Coatbridge. Whether you are a first-time buyer or seeking a new rental, this property is sure to meet your needs and exceed your expectations. Don't miss the chance to make this lovely house your new home.



Call us on
07717504350
sales@sweet-home.co.uk
<https://sweet-home.co.uk/>

Council Tax Band
B



Agents Note: Whilst every care has been taken to prepare these particulars, they are for guidance purposes only. All measurements are approximate and are for general guidance purposes only and whilst every care has been taken to ensure their accuracy, they should not be relied upon and potential buyers are advised to recheck the measurements.

