



2 Orchid Court Organford Manor, Organford, Poole, BH16 6ES

£249,950

- Two Double Bedrooms
- Envious Corner Plot
- Multiple Garden Spaces
- Driveway
- Sought After Development for Over 45s
- Deceptively Spacious Park Home
- Immaculately Presented
- En Suite to Main Bedroom
- GCH/UPVC Double Glazing
- No Forward Chain

2 Orchid Court Organford Manor, Poole BH16 6ES

NO FORWARD CHAIN! We are delighted to offer for sale this deceptively spacious, immaculately presented park home benefitting from a driveway and a large rear garden.



Council Tax Band: A

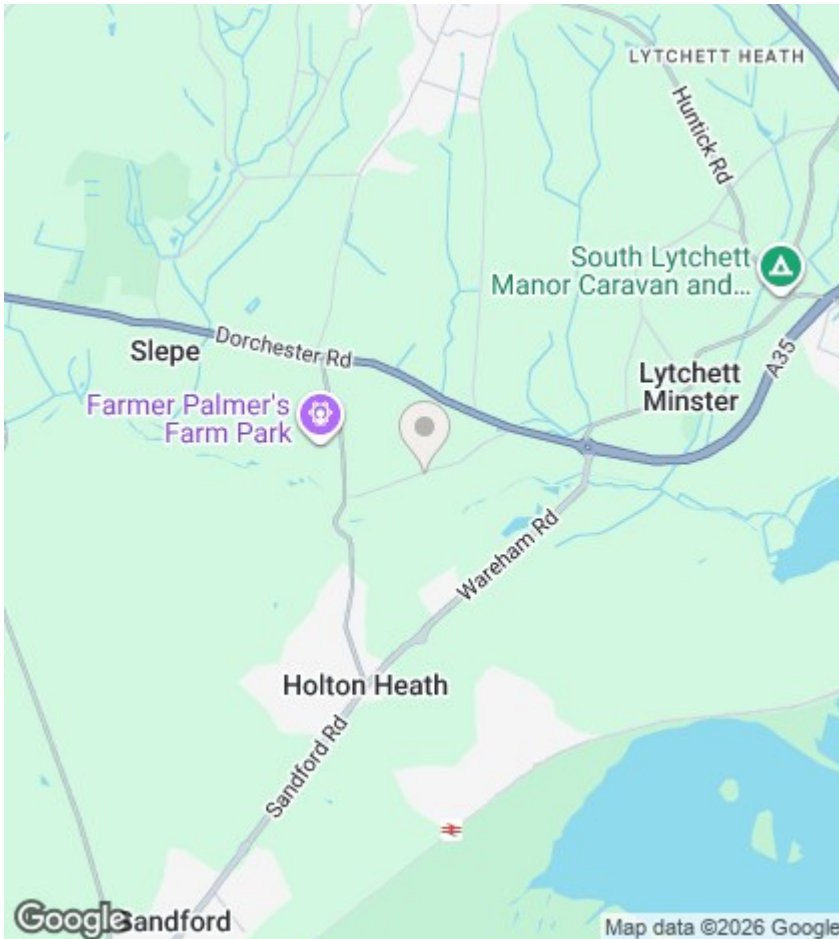


ORCHID COURT

The property is immaculately presented throughout and briefly comprises: two double bedrooms (both of which contain in-built storage), a modernised kitchen/diner, spacious lounge, family bathroom and multiple rear garden spaces.

Advertised with no forward chain, further benefits include: a driveway for two vehicles, useful storage space, an ideal office space, en-suite to main bedroom, gas central heating and UPVC double glazing.

Situated within a sought after development for over 45s, we expect this property to gain high levels of interest. To arrange a viewing, or for more information, please call our Upton branch at your earliest convenience.



Agents Note

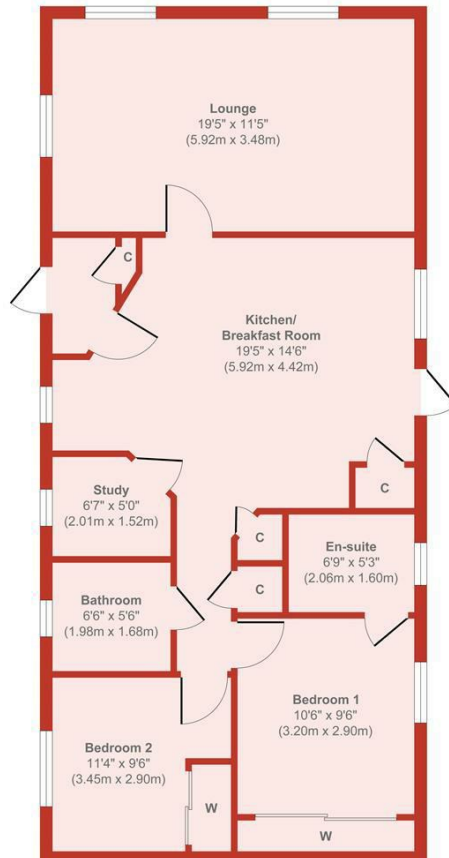
Whilst every attempt has been made to ensure the accuracy of details and measurements contained in these particulars, they are not to be relied upon especially when potential cost could be incurred. No appliances have been tested so the agent cannot verify that they are in working order. The agent has not seen any legal documentation to verify the legal status of the property. This must be verified by your chosen solicitor.

Viewings

Viewings by arrangement only. Call 01202 622101 to make an appointment.

EPC Rating:

Orchid Court, Organford



Floor Plan

Approx. Gross Internal Floor Area 867 sq. ft / 80.54 sq. m

Produced by Elements Property