



The Pinnacle, Oval Village, London, SE11

£890,000

- Contract reassignment—below original purchase price
- Two double bedrooms, two bathrooms (including en-suite)
- 10th floor position with elevated views
- Modern open-plan living and dining area
- High-specification contemporary finish throughout
- Exclusive resident amenities including pool, gym & cinema
- 24-hour concierge service
- Prime Central London location

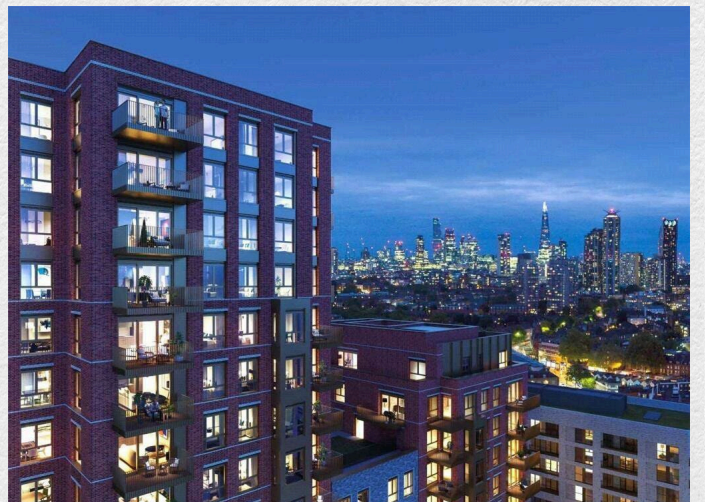
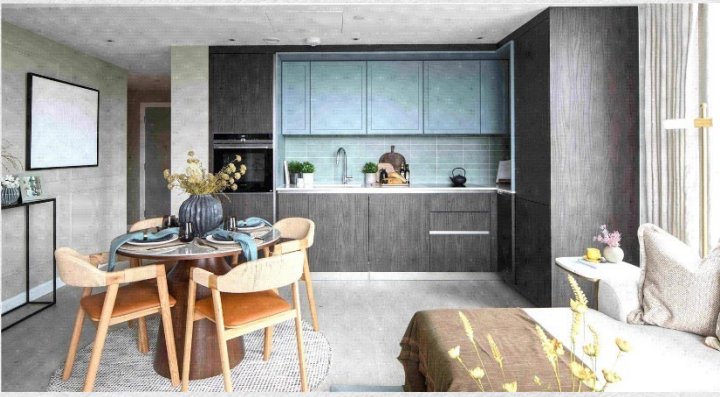
An outstanding opportunity to acquire a luxury two-bedroom, two-bathroom apartment in The Pinnacle, a prestigious new development in central London.

Offered via contract reassignment, this tenth-floor apartment presents a rare chance to secure a premium property ahead of completion in Q2 2026, potentially below current market value.

The apartment features a spacious open-plan living and dining area, designed to maximise natural light and provide a modern, versatile living space. Floor-to-ceiling windows enhance the sense of space, while the elevated position offers impressive views across the London skyline.

The property comprises two well-proportioned double bedrooms, including a principal bedroom with en-suite bathroom, alongside a second stylish family bathroom. The layout is ideal for both owner-occupiers and investors seeking strong rental appeal.

Finished to a high specification, the apartment benefits from sleek contemporary interiors and quality fittings throughout.





ONE LONDON

PROPERTY

*The Pinnacle, Oval Village,
SE11*

SIZE

805 sq ft

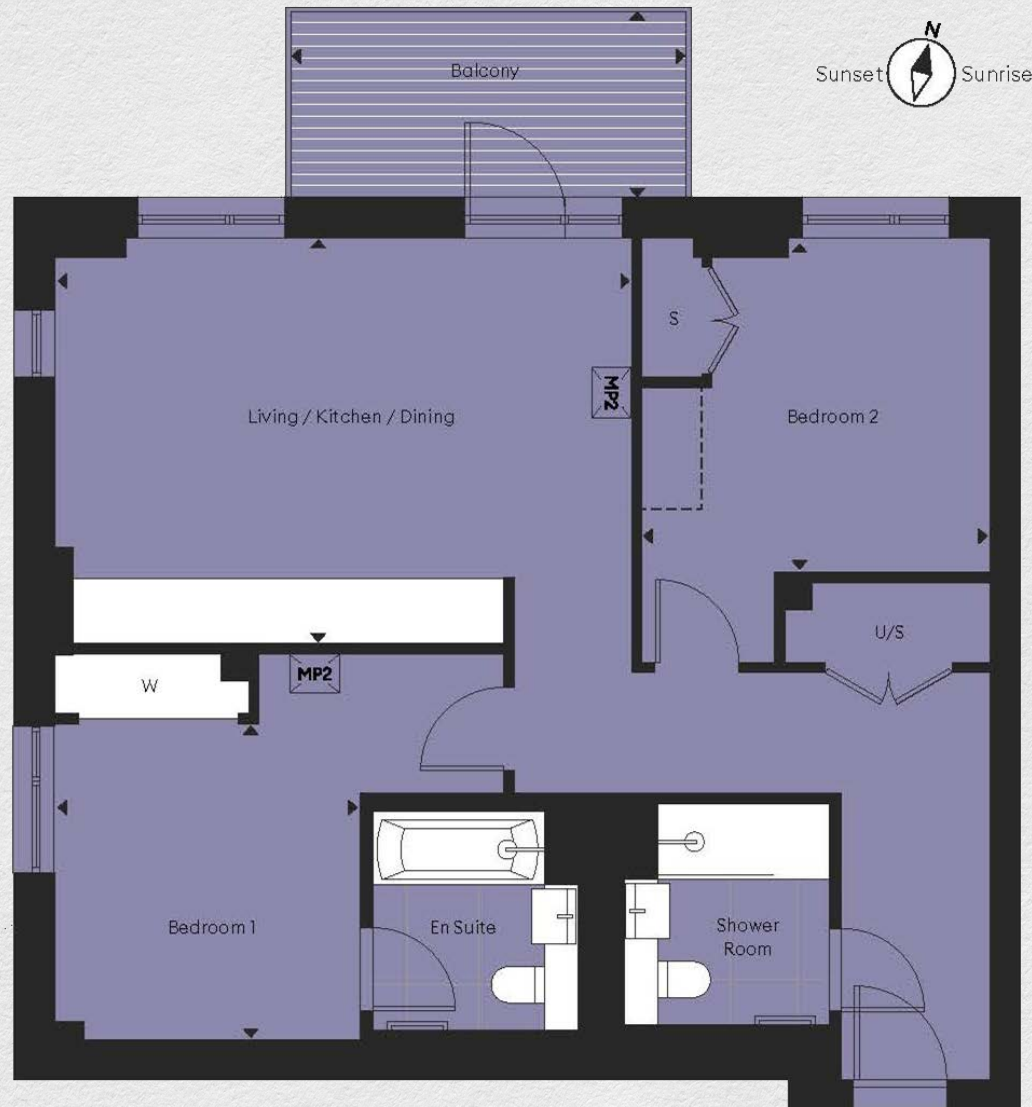
Two bedrooms / Two bathrooms

CONTACT

0207 856 0396

info@one-london.uk

www.one-london.uk



*** For illustration purposes only. Could not be to scale.
One-London aims to ensure accuracy but is not liable
for any discrepancies.*

EW11