



## Calthorpe Street, WC1X

£570 Per week

A two bedroom duplex, with a recently refurbished family bathroom and kitchen. Equal sized bedrooms, a lot of built in storage and great views of the city.

Located just between Gray's Inn Road and Mount Pleasant, the property is less than half a mile to Russell Square and Chancery Lane Station, and just over half a mile to Farringdon Station.

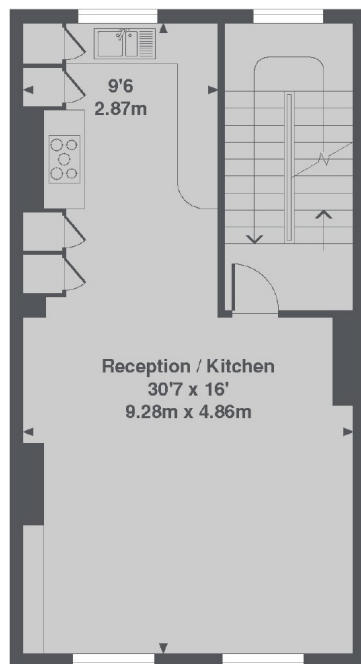
### Features

Two Bedroom  
Duplex  
Top Floor  
Modern Kitchen  
Modern Bathroom  
Amazing Views

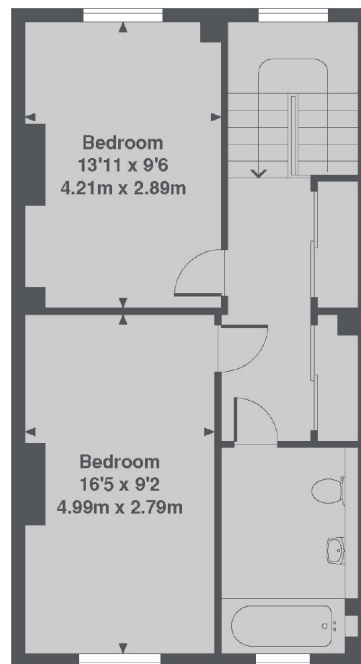
## Calthorpe Street, London, WC1X



Ground Floor



1st Floor



2nd Floor

Calthorpe Street, WC1X

Total Approx. Floor area 1012 Sq. Ft. (94.0 Sq. M.)

### Contact

To arrange a viewing call our office on the number below or visit our website.



Energy Rating: C. We aim to make our particulars both accurate and reliable. However they are not guaranteed; nor do they form part of an offer or contract. If you require clarification on any points then please contact us, especially if you're traveling some distance to view. Please note that appliances and heating systems have not been tested and therefore no warranties can be given as to their good working order.