


PROMINENCE
ESTATES



RESIDENTIAL
PROPERTY EXPERTS

COVENTRY, WARWICKSHIRE
& LEAMINGTON SPA

THE MARTYRS CLOSE,
COVENTRY, CV3 5FN

£1,650 PER MONTH

THE MARTYRS CLOSE



PROMINENCE
ESTATES

A stunning 3-bedroom end-of-terrace house in the sought-after area of Cheylesmore, now available for rent. This modern home has been meticulously updated throughout, offering a perfect blend of contemporary style and comfort.

The spacious living areas are bright and welcoming, with a neutral colour scheme and high-quality finishes. The contemporary kitchen is fully equipped with modern appliances, ideal for those who love to cook and entertain.

Upstairs, you'll find three well-sized bedrooms, each offering ample storage and natural light. The family bathroom is sleek and stylish, with modern fixtures and fittings.

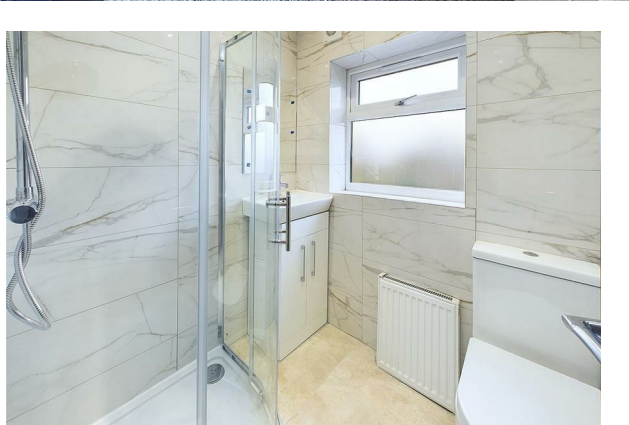
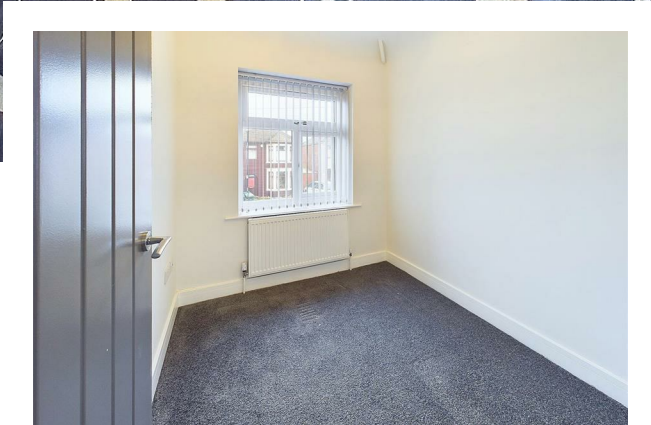
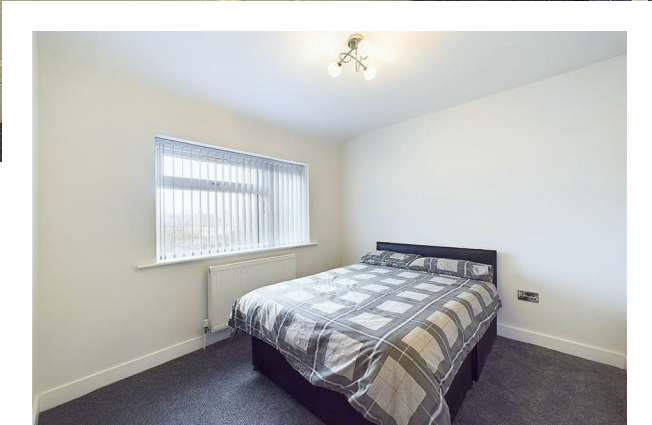
Outside, the property benefits from a private driveway, providing convenient off-road parking.

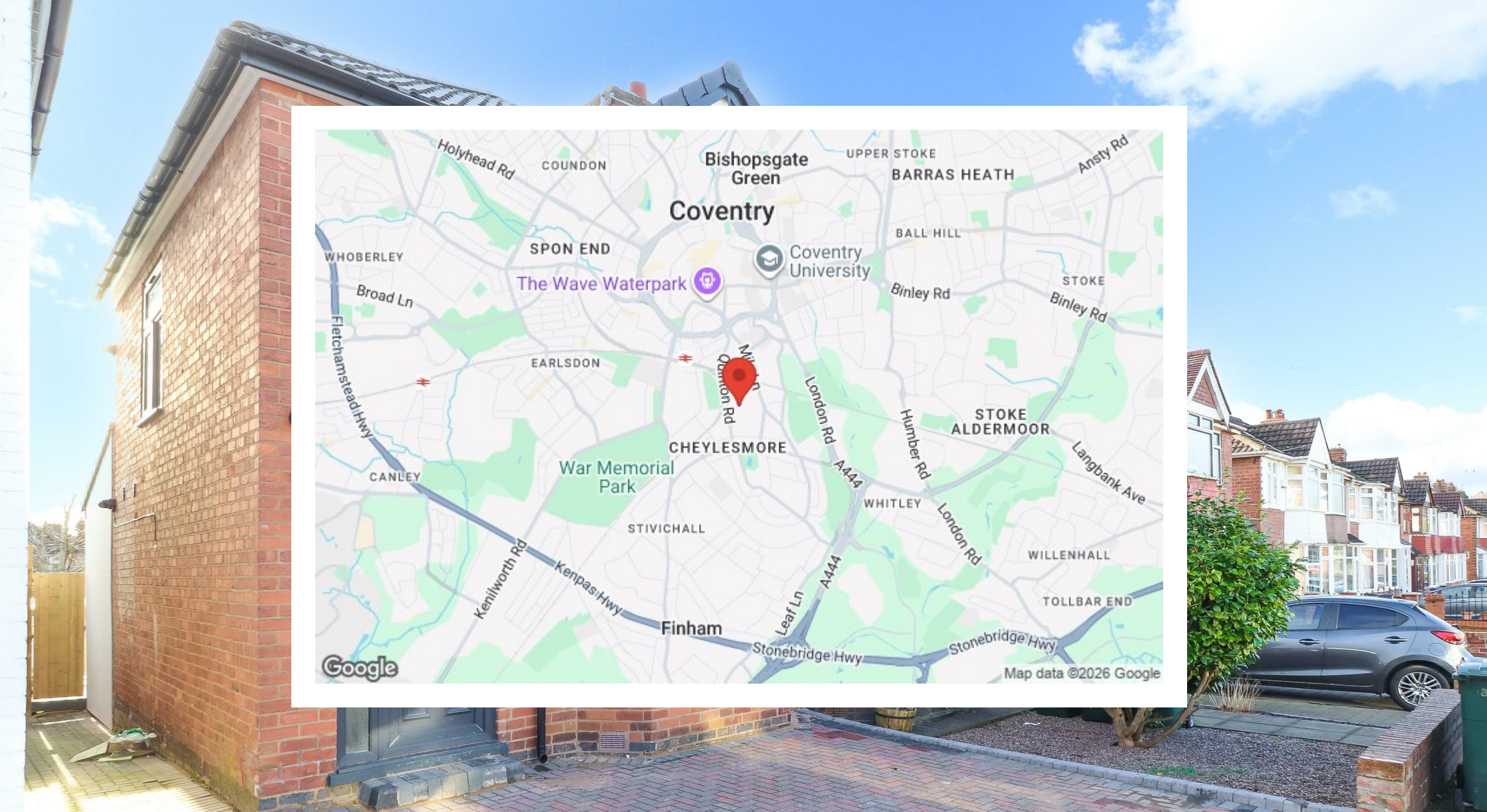
To the rear, you'll discover a charming summer house with electric, offering a versatile space for a home office, gym, or relaxing retreat. The garden is low-maintenance and perfect for outdoor entertaining or simply enjoying the sunshine.

Located in the popular Cheylesmore area, the property is close to local amenities, schools, and excellent transport links, making it an ideal choice for families or professionals.

Don't miss out on this exceptional property—book a viewing today!







Prominence Estates
5 Queen Isabels Avenue,
Cheylesmore,
Coventry,
CV3 5GE

02476 309 826
lettings@prominenceestates.com
www.prominenceestates.com


PROMINENCE
ESTATES