

Paxton Road, SE23

£245,000

Situated on the top floor within the popular Paxton development, this well-presented one-bedroom flat has been recently renovated throughout and features a spacious reception room, a separate kitchen, and a contemporary bathroom. Residents benefit from access to two communal gardens, a private swimming pool and an allocated parking space.

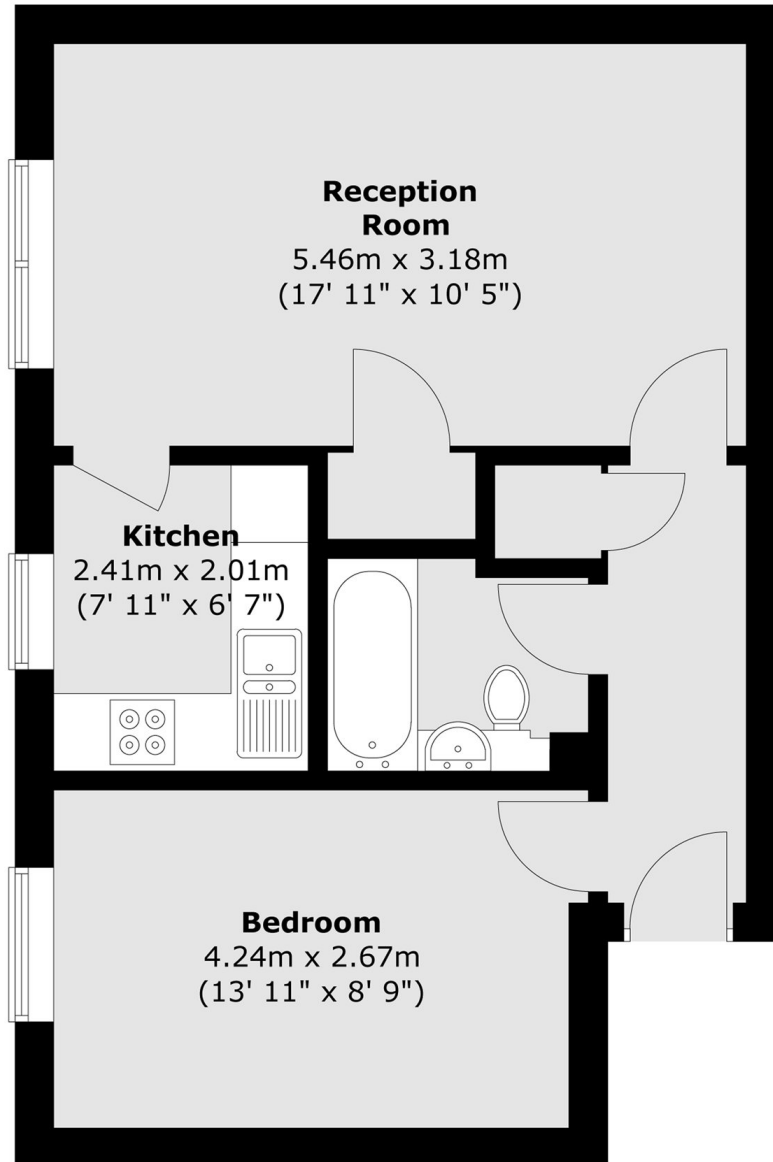
Nestled on Paxton Road, this home is ideally placed for easy access to Forest Hill and Sydenham stations, offering quick links into London Bridge, the City, and beyond via the Overground. The area enjoys an array of cafés, bars, and independent shops just a short stroll away. Beautiful green spaces such as Mayow Park, Horniman Gardens, Dulwich Woods, and Crystal Palace Park are also close by.

Features

- One Bedroom
- Long Lease
- Communal Gardens
- Residents Swimming Pool
- Allocated Parking
- Chain Free

Paxton Road,
London, SE23

Second Floor



Total area (approx.) : 44.4 sq. m (478 sq. ft)