



## 10 Belfry Square, Beggarwood – RG22 4WZ

£450,000 Freehold

Four Spacious Double Bedrooms • Open-Plan Living Accommodation • En Suite to Principal Bedroom • Modern Family Bathroom • Ground Floor Cloakroom with Shower • Low Maintenance Rear Garden • Council Tax Band: F

01256 321777

[www.thepropertyexplorer.co.uk](http://www.thepropertyexplorer.co.uk)

the property  
**explorer**



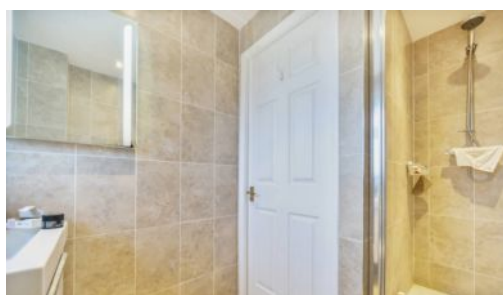
EXPLORER are delighted to offer this spacious and versatile four-bedroom townhouse, perfectly suited to modern family living. Beautifully presented throughout, the property delivers generous and flexible accommodation arranged over three floors.

Council Tax band: F

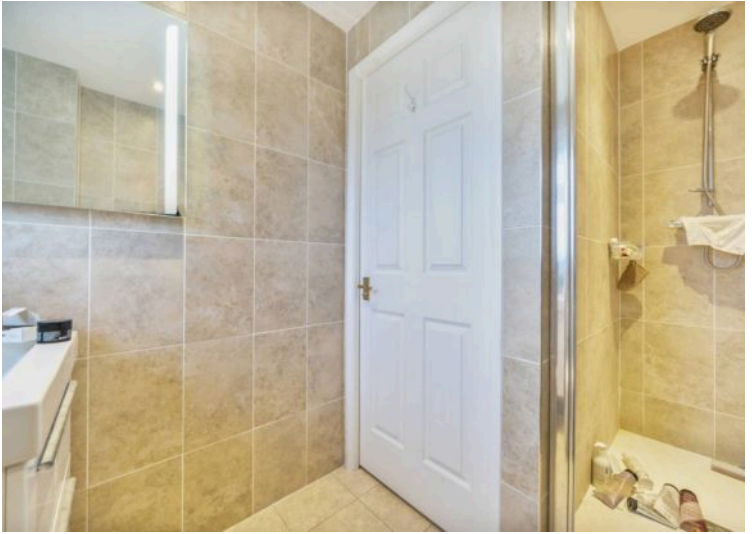
Tenure: Freehold



- Four Spacious Double Bedrooms
- Open-Plan Living Accommodation
- En Suite to Principal Bedroom
- Modern Family Bathroom
- Ground Floor Cloakroom with Shower
- Low Maintenance Rear Garden
- Council Tax Band: F

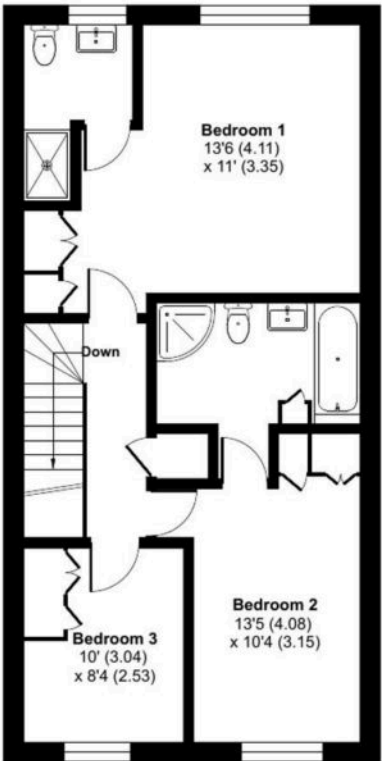




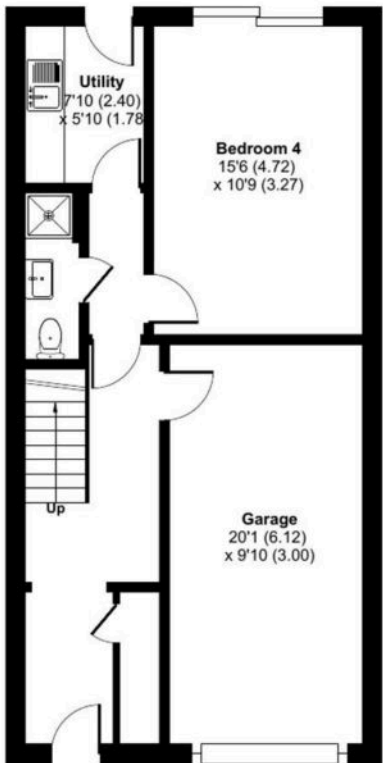


# Belfry Square, Beggarwood, Basingstoke, RG22

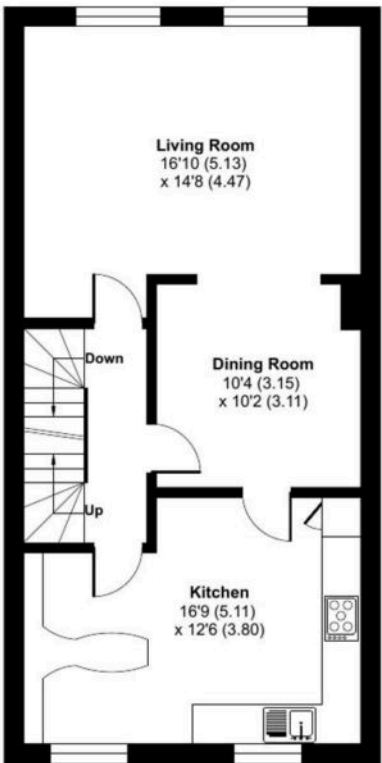
Approximate Area = 1623 sq ft / 150.7 sq m  
Garage = 195 sq ft / 18.1 sq m  
Total = 1818 sq ft / 168.8 sq m  
For identification only - Not to scale



SECOND FLOOR



GROUND FLOOR



FIRST FLOOR

Floor plan produced in accordance with RICS Property Measurement 2nd Edition, Incorporating International Property Measurement Standards (IPMS2 Residential). © nichecom 2026. Produced for Property Explorer. REF: 1409060

You can include any text here. The text can be modified upon generating your brochure.