



Shooters Hill Road, SE3

£2,500,000

Dexters



Shooters Hill Road, SE3

A substantial six bedroom, three bathroom Grade II Listed Georgian detached Tea Caddy house, built in 1822 and spread over four floors, set back from the main road and positioned on the doorstep of the Heath in Blackheath.

This impressive period home offers generous and versatile accommodation arranged over four floors, combining elegant proportions with practical family living. The hall floor features two well-balanced reception rooms with high ceilings and large windows, currently arranged as a cosy living room and a study/formal dining room, providing flexible space for both everyday living and entertaining. The lower ground floor forms the heart of the home, with a spacious kitchen and dining area complete with underfloor heating, creating a warm and sociable environment. This space opens directly onto a stunning south facing garden, ideal for summer gatherings and outdoor dining. This level also includes an additional bedroom, a separate utility room, a shower room and a WC, offering excellent flexibility. Across the upper floors are five further double bedrooms, including a generous principal suite with a four-piece en suite bathroom. A family bathroom is conveniently positioned on the half landing, while the top floor bedroom benefits from extensive eaves storage. Externally, the property provides substantial off-street parking for approximately five to seven vehicles, an electric vehicle charging point and a garage.

Features

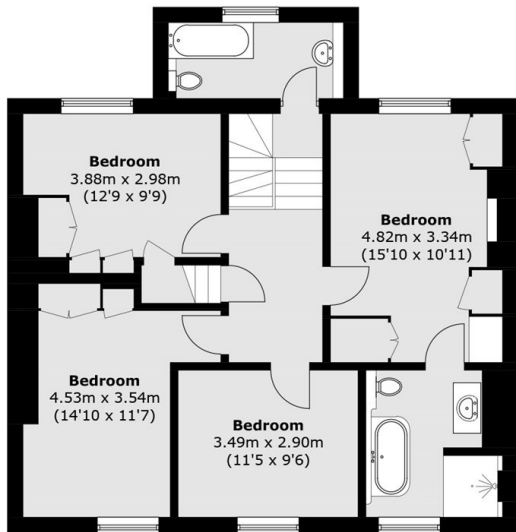
- Georgian Grade II Listed
- Off-Street Parking
- Detached
- Stunning South Facing Garden
- Six Bedrooms
- Three Bathrooms



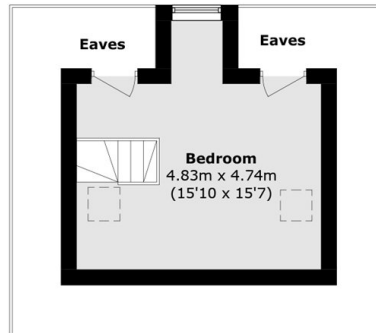




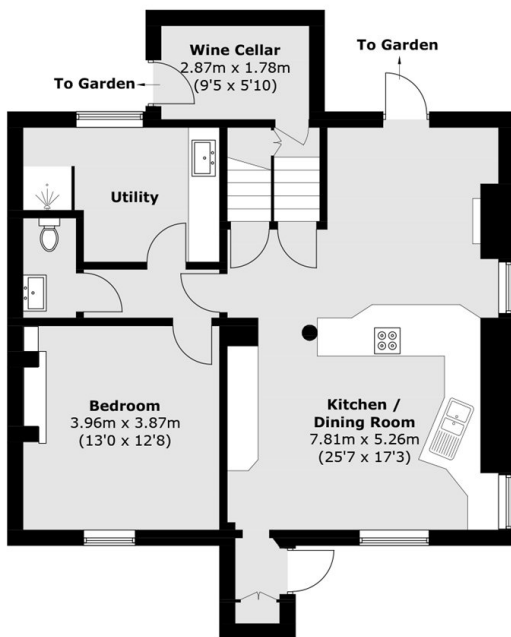
Shooters Hill Road, London, SE3



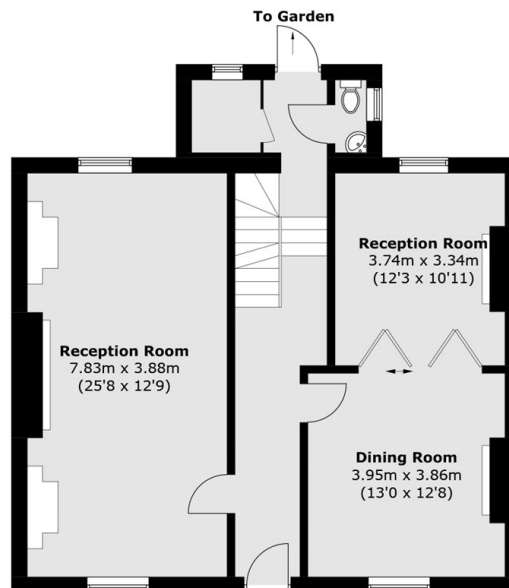
First Floor



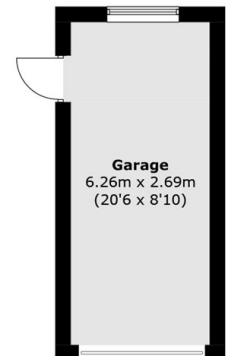
Second Floor



Lower Ground Floor



Raised Ground Floor



**(Not Shown In Actual
Location / Orientation)**

Total area (approx.): 255.9 sq. m (2,754.4 sq. ft)
(Excluding Eaves)

Garage : 17.0 sq. m (183.0 sq. ft)