



Isaac Way, SE1

£2,300 Per week

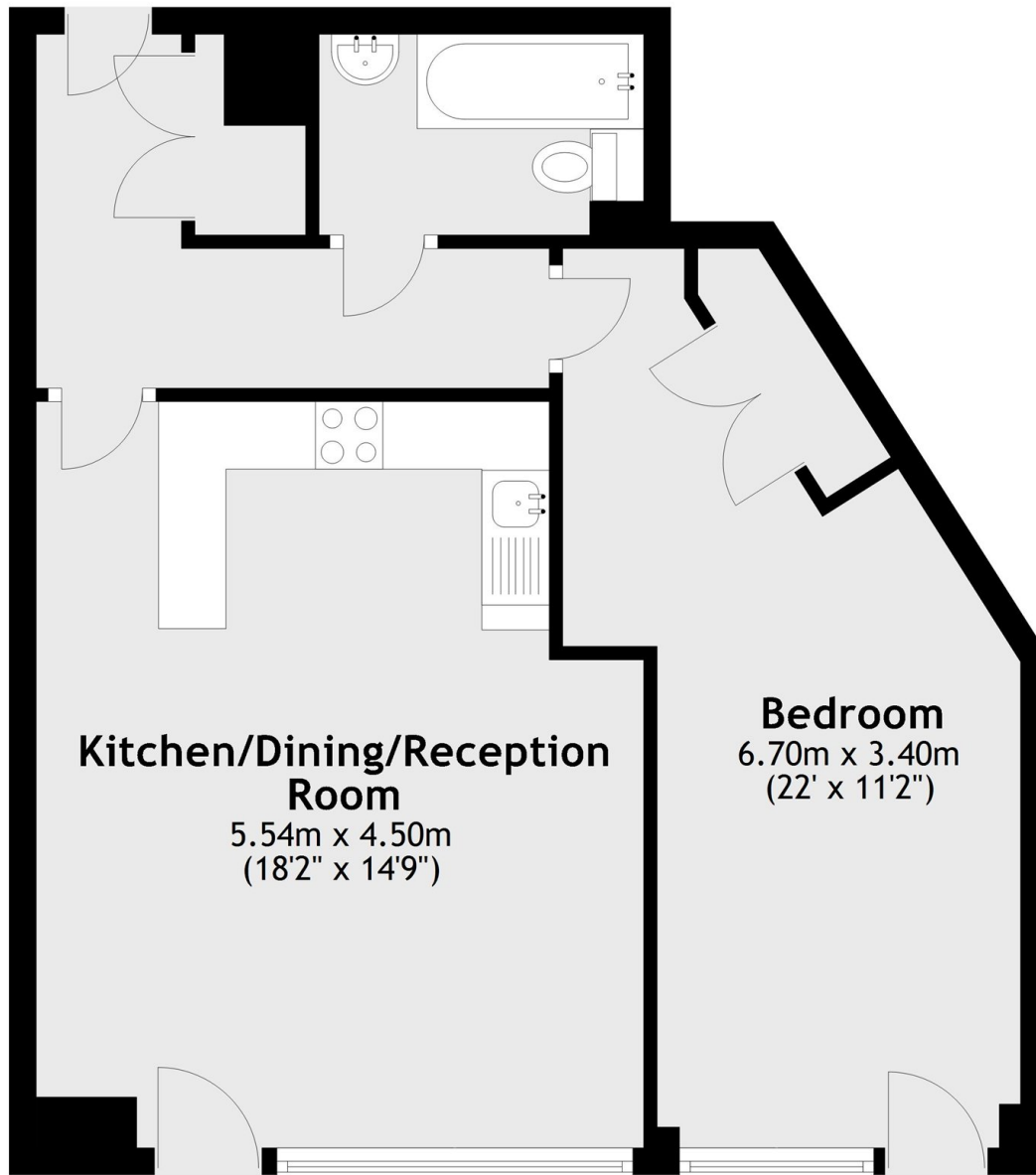
An attractive almost 600 sq ft modern apartment, in a private gated development, with a spacious open plan kitchen & living room, private full length patio, generous double bedroom, bathroom & ample storage.

Isaac Way is tucked behind Marshalsea Road and Lant Street, next to Borough underground at the foot of Borough High Street, with London Bridge, Borough Market, the Shard and South Bank all moments away.

Features

- One Bedroom
- Private Full Length Patio
- Gated Development
- Secure Underground Parking
- Excellent Transport Links

**Isaac Way,
London, SE1**



Total area: approx. 52.9 sq. metres (569.2 sq. feet)