



GREENWICH HIGH ROAD, SE10

£2,425 per month

Modern converted apartment

Two bedrooms

Open plan

Private roof terrace

Close to stations

Energy rating: d

ABOUT THE PROPERTY

A modern converted second floor two bedroom apartment, featuring a roof terrace.

Located just a short walk from Greenwich's mainline and DLR stations, this apartment provides easy access to transport links. Additionally, the vibrant town centre and the picturesque Royal Park are both within close proximity, offering a perfect blend of modern living and outdoor spaces.







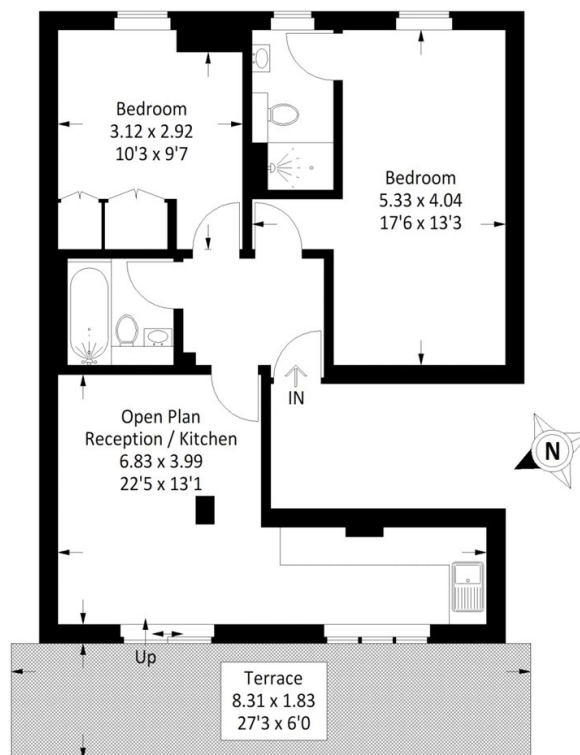
FURTHER DETAILS

This stylish apartment features a spacious open plan kitchen and reception room, which opens up to a private roof terrace perfect for enjoying outdoor moments in privacy.

The property offers two generously sized bedrooms, both with built-in wardrobes. The master bedroom comes with an en suite shower room for added convenience and luxury. There is also a second family bathroom, complete with a bathtub and shower over bath.



STEP INSIDE GREENWICH HIGH ROAD



Second Floor

Approximate Gross Internal Area 57.8 sq m / 622 sq ft

Greenwich
020 8815 2230

Energy Rating: D We aim to make our particulars both accurate and reliable. However, they are not guaranteed; nor do they form part of an offer or contract. If you require clarification on any points then please contact us, especially if you're traveling some distance to view. Please note that appliances and heating systems have not been tested and therefore no warranties can be given as to their good working order

**MARSH &
PARSONS**