



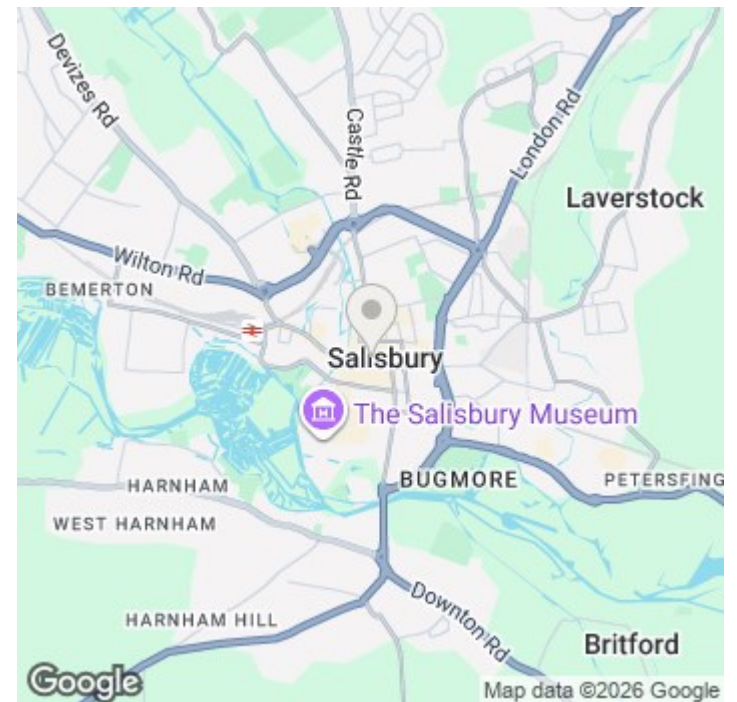
26B Butcher Row, Salisbury, SP1 1EP

£1,050 PCM

About The Property

A well-presented two bedroom second floor apartment with views over Salisbury Market Square, offering modern accommodation in the heart of the city. Complete with white goods and within easy walking distance of the railway station and local amenities.

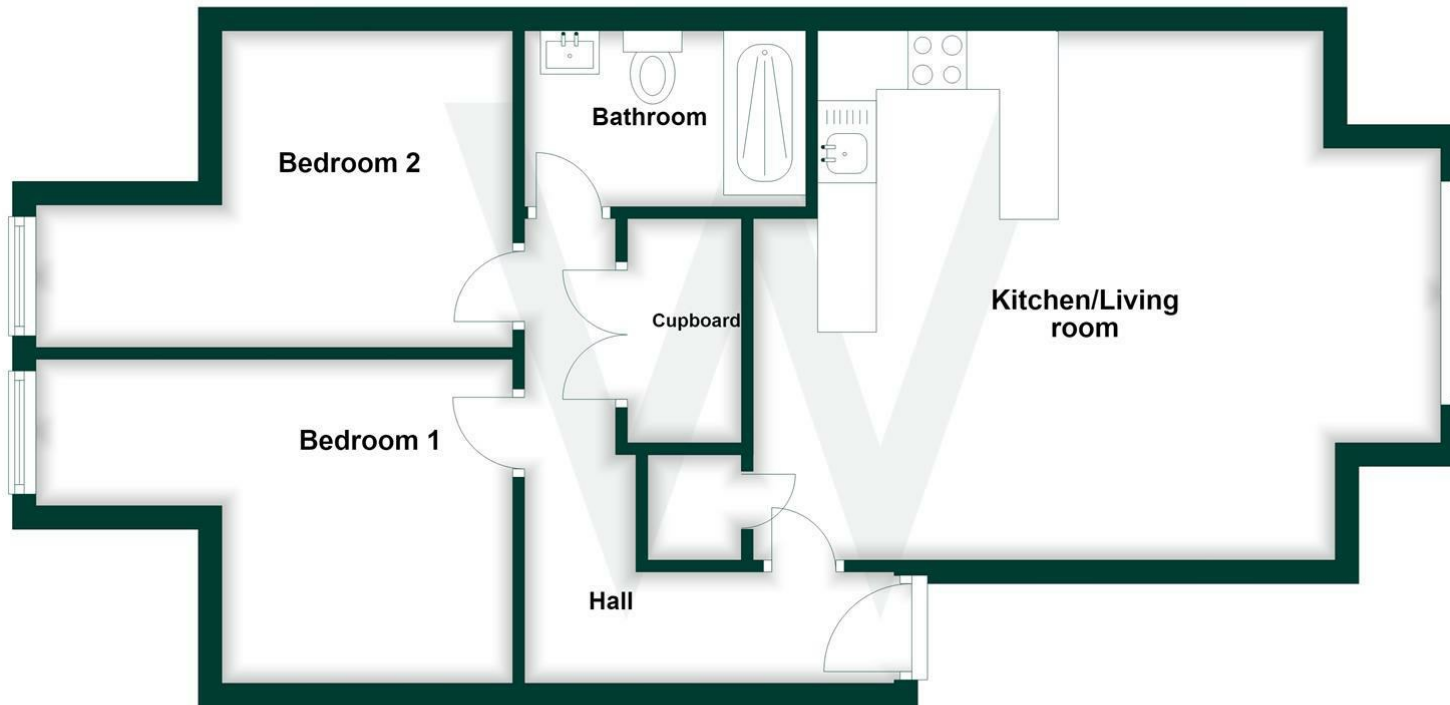
- Second Floor Apartment
- Two Double Bedrooms
- Market Square Views
- Open-Plan Living
- White Goods Included
- Modern Shower Room
- City Centre Location
- Walk to Railway Station
- Close to Amenities
- Well-Presented Throughout





Ground Floor

Approx. 51.9 sq. metres (558.8 sq. feet)



Total area: approx. 51.9 sq. metres (558.8 sq. feet)

Further Information

Let available date: 10th August 2026
 NB: This date is provisional and will only be confirmed once referencing has been successfully completed.

Property type: Apartment

Furnish type: Unfurnished

Deposit: £1,210

Local authority:

Council Tax: Band B

EPC: C(76)

Energy Efficiency Rating

	Current	Potential
Very energy efficient - lower running costs		
(92 plus) A		
(81-91) B		
(69-80) C	76	77
(55-68) D		
(39-54) E		
(21-38) F		
(1-20) G		
Not energy efficient - higher running costs		
England & Wales	EU Directive 2002/91/EC	