



Balfour Road, W13

£600 Per week

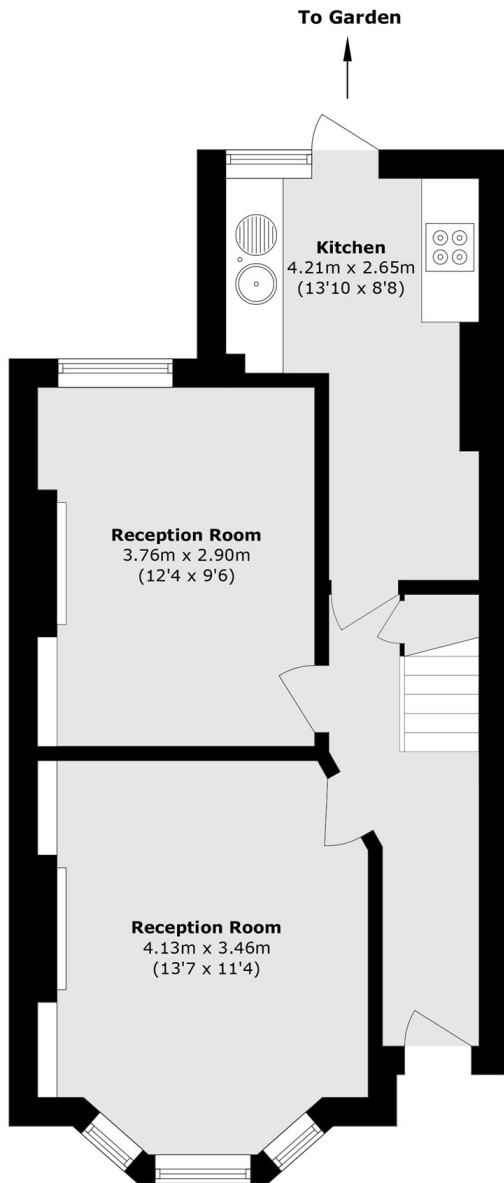
A well-presented two-bedroom house with a separate kitchen, offered furnished, featuring a private garden, and a Victorian fireplace in the living room also ideally located close to Fielding Primary School.

Balfour Road is situated a short walk to Fielding Primary School, and well located for West Ealing Station (Elizabeth Line) and Northfields Station (Piccadilly Line). Balfour Road is also moments from Northfield Avenue which has an array of shops, bars and restaurants.

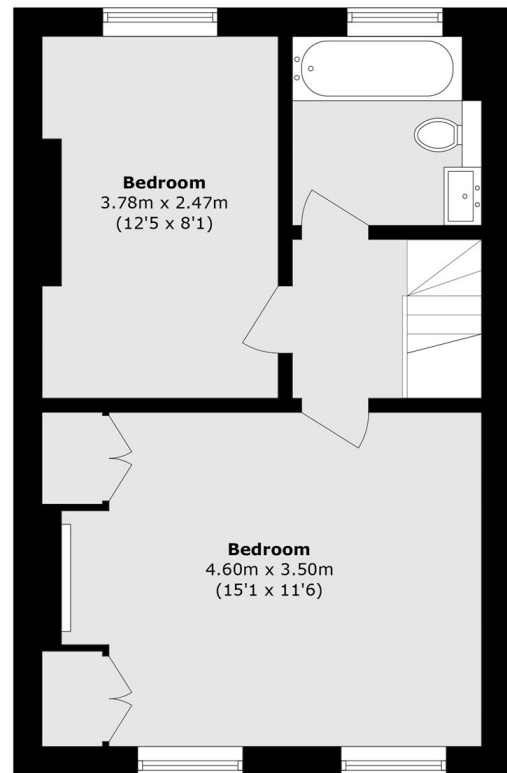
Features

- House
- Two Bedroom
- Separate Kitchen
- Furnished
- Garden
- Close to Fielding Primary School

Balfour Road,
London, W13



Ground Floor



First Floor

Total area (approx.): 74.8 sq. m (805.1 sq. ft)