

Heath Road, TW1

£499,950

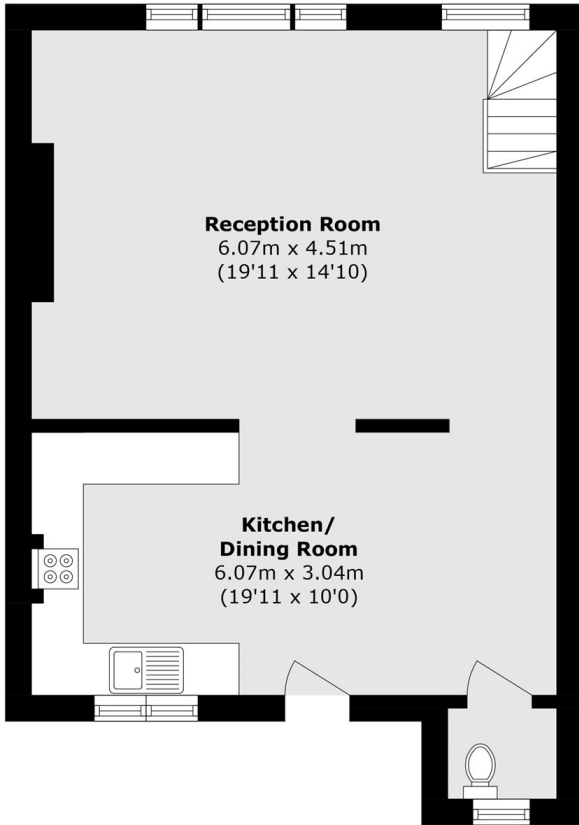
A beautifully presented split-level two double bedroom flat in the heart of Twickenham, offering bright and spacious living throughout. Boasting a stunning South-facing terrace, this home is perfectly positioned for central living with excellent local amenities.

Heath Road is the main high street through Twickenham where you can find a vast array of shops, pubs and restaurants. Twickenham Green is close by and Twickenham mainline station with its fast link to London Waterloo is also just a few hundred yards away.

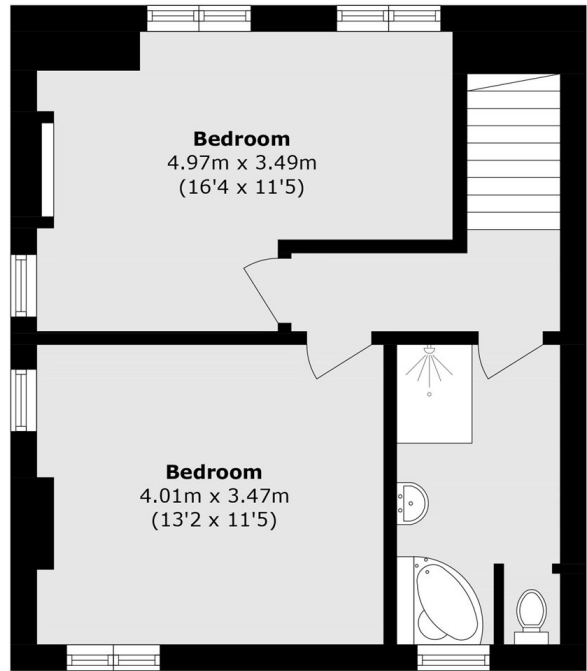
Features

- Two Double Bedrooms
- Split-Level Apartment
- Large South-Facing Terrace
- Open Plan Living Room
- Central Location
- No Onward Chain

Heath Road, Twickenham, TW1



First Floor



Second Floor

Total area (approx.): 91.0 sq. m (979.5 sq. ft)