



London Road, Portsmouth, PO2 9HJ

£120,000

This property is being sold via Secure Sale online bidding. Terms & Conditions apply. Starting bid £120,000.00

Situated on the bustling London Road in Portsmouth, this charming purpose-built apartment, with TENANTS IN SITU, offers a delightful blend of comfort and convenience. With two well-proportioned double bedrooms, this residence is perfect for individuals, couples, or small families seeking a modern living space in a vibrant area.

The layout is thoughtfully designed to maximise space and light, creating an inviting atmosphere throughout.

You can enjoy a variety of local amenities, including shops, cafes, and public transport links, making it an excellent choice for those who appreciate urban living. Whether you are commuting to work or exploring the cultural offerings of Portsmouth, this apartment serves as a perfect base.

PCM rental income: £1,000.00
Annual ground rent: £150.00
Annual service charge: £1,788.00

London Road, Portsmouth, PO2 9HJ

Lounge 8'1" x 12'5" (2.47 x 3.79)

Bedroom 14'10" x 8'10" (4.53 x 2.71)

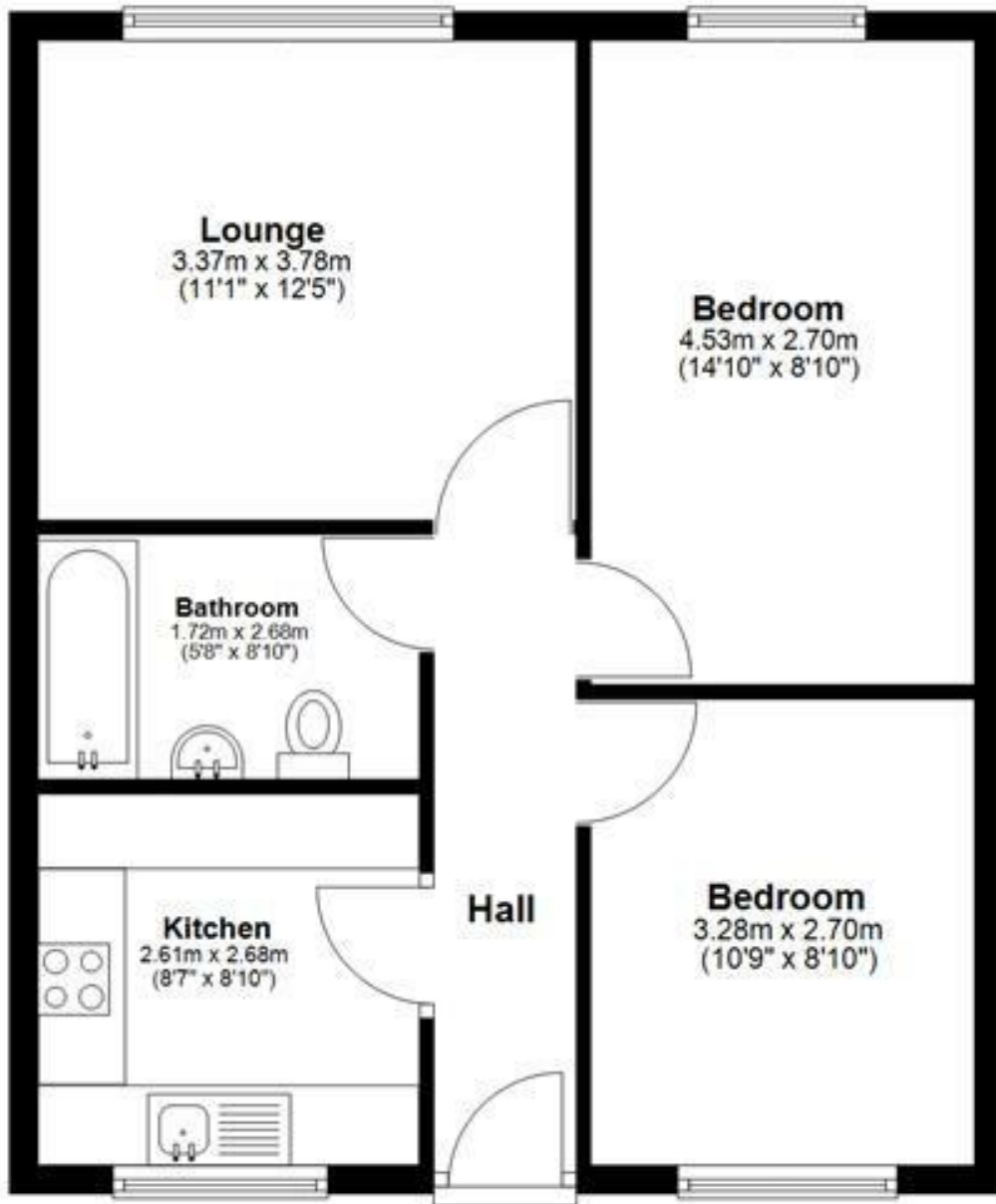
Bedroom 10'6" x 8'10" (3.21 x 2.70)

Bathroom 8'9" x 5'8" (2.69 x 1.74)

Kitchen 8'7" x 8'9" (2.62 x 2.69)

Floor Plan

Approx. 52.0 sq. metres (560.2 sq. feet)



Total area: approx. 52.0 sq. metres (560.2 sq. feet)

Energy Efficiency Rating		
	Current	Potential
Very energy efficient - lower running costs		
(92 plus) A		
(81-91) B		
(69-80) C		
(55-68) D		
(39-54) E		
(21-38) F		
(1-20) G		
Not energy efficient - higher running costs		
England & Wales	79	79
EU Directive 2002/91/EC		

Environmental Impact (CO ₂) Rating		
	Current	Potential
Very environmentally friendly - lower CO ₂ emissions		
(92 plus) A		
(81-91) B		
(69-80) C		
(55-68) D		
(39-54) E		
(21-38) F		
(1-20) G		
Not environmentally friendly - higher CO ₂ emissions		
England & Wales		
EU Directive 2002/91/EC		