



67 St. Julians Crescent,
Shrewsbury, SY1 1UD
£1,100 PCM

monks
monks.co.uk



Description

****COMING SOON- A NEWLY DECORATED AND CARPETED TWO BEDROOM APARTMENT****

With allocated parking within the Town Centre. The accommodation briefly comprises; Reception hall, excellent lounge/ dining room with spacious kitchen with a range of integrated appliances. Principal bedroom with en suite, a further bedroom, study and bathroom.

IMPORTANT NOTICE

Information for tenants:

Rent: £1100 per calendar month

Deposit: £1269 Monks have considered that the deposit for this property is Equivalent to 5 weeks rent

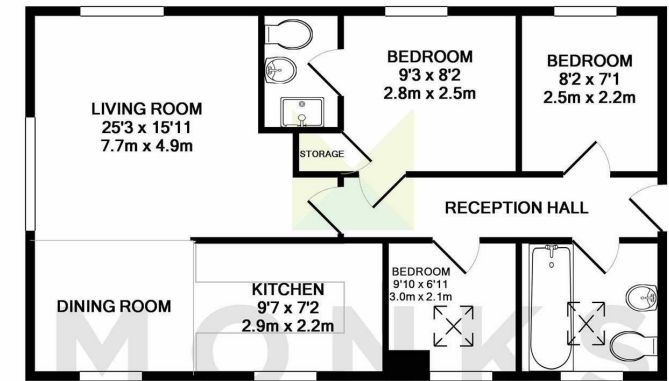
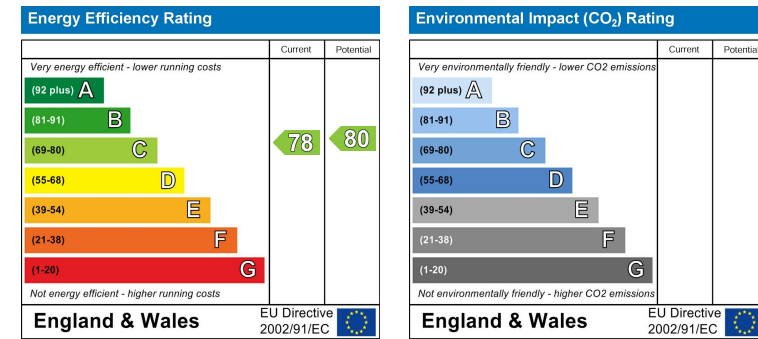
Holding Deposit: £253 Equivalent to 1 Weeks Rent

Council Tax Band: C Please confirm the Council Tax band via Shropshire Council

Term: Assured Periodic Tenancy

Measurements: All measurements are approximate

Services: We are advised that mains water, gas and electric are available



TOTAL APPROX. FLOOR AREA 603 SQ.FT. (56.0 SQ.M.)

Whilst every attempt has been made to ensure the accuracy of the floor plan contained here, measurements of doors, windows, rooms and any other items are approximate and no responsibility is taken for any error, omission, or mis-statement. This plan is for illustrative purposes only and should be used as such by any prospective purchaser. The services, systems and appliances shown have not been tested and no guarantee as to their operability or efficiency can be given

Made with Metropix ©2019



monks
monks.co.uk

10a-11 Shoplatch, Shrewsbury, Shropshire, SY1 1HL

info@monks.co.uk



Tel: 01743 361422

Fax: #

