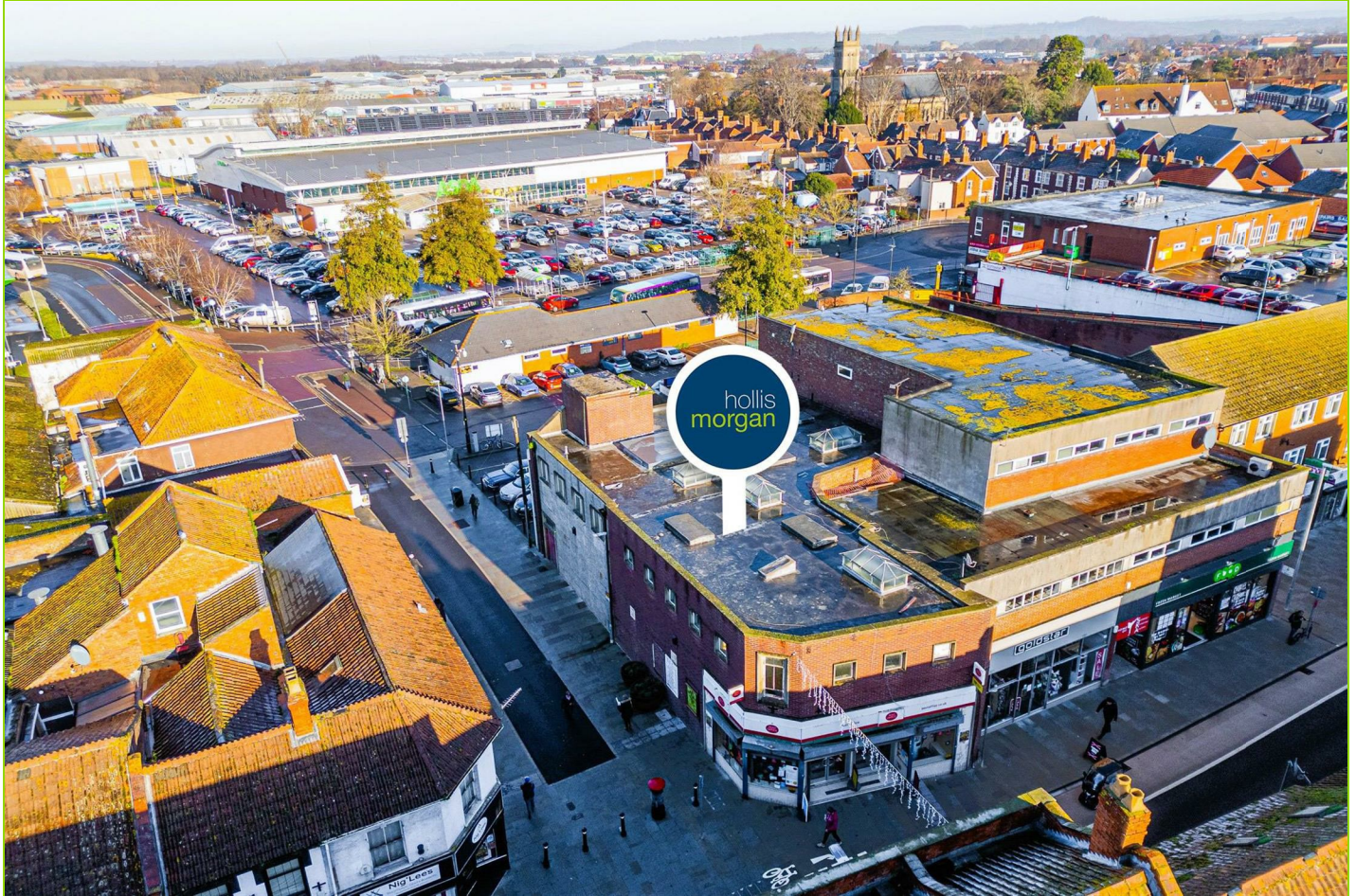


Residential Development Land Sales



27 Eastover, Bridgwater, Somerset, TA6 5AW

Sold @ Auction £220,000

Hollis Morgan – A Freehold DEVELOPMENT OPPORTUNITY | CORNER PROPERTY (3207 Sq Ft) with RESI PLANNING GRANTED to create a scheme of 10 X FLATS

27 Eastover, Bridgwater, Somerset, TA6 5AW

FOR SALE BY LIVE ONLINE AUCTION

*** SOLD @ MARCH LIVE ONLINE AUCTION ***

GUIDE PRICE £200,000 +++

SOLD @ £220,000

ADDRESS | 27 Eastover, Bridgwater, Somerset TA6 5AW

Lot Number 41

The Live Online Auction is on Wednesday 11th March 2026 @ 12:00 Noon

Registration Deadline is on Friday 6th March 2026 @ 16:00

The Auction will be streamed LIVE ONLINE via the Hollis Morgan website & you can choose to bid by telephone, proxy or via your computer.

Registration is a simple online process – please visit the Hollis Morgan auction website and click “REGISTER TO BID”

THE PROPERTY

A Freehold commercial premises occupying a prominent corner position with access via New Road next to the supermarket car park and the main High Street.

The accommodation (3207 Sq Ft) is arranged over two floors trading as the Post Office on the ground floor with vacant ancillary / office accommodation above.

Interested parties should note that Eastover is currently undergoing improvements under the Celebration Mile initiative as part of the government-funded Bridgwater Town Deal. This wider regeneration project is designed to enhance Bridgwater's appeal as a vibrant economic centre, creating new opportunities for local businesses and supporting long-term growth.

Sold subject to existing ground floor tenancy

Tenure - Freehold

EPC - D

THE OPPORTUNITY

RESIDENTIAL DEVELOPMENT OPPORTUNITY

Planning was granted (08/22/00076) to erect a second storey to allow for the development of 10 self contained flats (2 x 2 Beds | 8 x 1 Beds) and 2 commercial units.

Please note planning is due to expire 18.8.26

EXISTING COMMERCIAL TENANT

The ground floor is let to the Post Office generating £2,000 pcm | £24,000 pa

We understand the tenancy can be terminated by giving 28 days' notice - please refer to lease in legal pack.

PLANNING GRANTED

Application Number: 08/22/00076

Parish/Town Council: Bridgwater

Registered Date: 01/07/2022

Type: Full Planning Permission

Proposal: Change of use of post office and creation of a second floor, to create 2no. retail units at ground floor and 10no. apartments at first floor and second floor.

Decision Date: 18/08/2023

Decision: Granted Permission

PROPOSED SCHEDULE OF DEVELOPMENT

Commercial Unit 1 – 71.65 Sqm

Commercial Unit 2 – 101.33 Sqm

Flat 1 – 1 Bed | 1 Bath | 50.74 Sqm

Flat 2 – 2 Bed | 2 Bath | 62.35 Sqm

Flat 3 – 1 Bed | 1 Bath | 40.22 Sqm

Flat 4 – 1 Bed | 1 Bath | 39.73 Sqm

Flat 5 – 1 Bed | 1 Bath | 39.52 Sqm

Flat 6 – 1 Bed | 1 Bath | 51.17 Sqm

Flat 7 – 2 Bed | 2 Bath | 61.63 Sqm

Flat 8 – 1 Bed | 1 Bath | 40.33 Sqm

Flat 9 – 1 Bed | 1 Bath | 41.39 Sqm

Flat 10 – 1 Bed | 1 Bath | 40.25 Sqm

PLANNING INFORMATION

Full details of the proposed scheme and drawings can be downloaded with the online legal pack.

LOCATION

The property is situated in the centre of the market town of Bridgwater, with local amenities close to hand including Bridgwater Railway Station. The town centre offers an extensive range of services including retail, leisure and educational facilities. Access to the M5 motorway can be found via junctions 23 and 24. There are regular bus services to Taunton, Weston-super-Mare and Burnham-on-Sea plus a daily coach to London Hammersmith.

SOLICITORS & COMPLETION

TBC

EXTENDED COMPLETION

Completion is set for 8 weeks or earlier subject to mutual consent.

IMPORTANT AUCTION INFORMATION

VIEWINGS

Please submit a viewing request online and we will contact you to organise an appointment.

We will send you an email and text to confirm the appointment time and the full property address.

Viewings are supervised by a member of the Hollis Morgan Auction team who will meet you at the property.

MATERIAL INFORMATION

Information including utilities, Electricity supply, Water supply, Sewerage, Heating, Broadband, Mobile signal / coverage, Parking, Building safety, Restrictions and rights, Rights and easements, Flood risk, Erosion risk, Coastal erosion risk, Planning permission for proposal for development, Property accessibility / adaptations, Coalfield or mining area all of which will be supplied within the legal pack that can be accessed for free via the Hollis Morgan website or via your EIG account.

ONLINE LEGAL PACKS

Digital Copies of the Online legal pack can be downloaded Free of Charge.

Please visit the Hollis Morgan Website and select the chosen

27 Eastover, Bridgwater, Somerset, TA6 5AW

lot from our Current Auction List.

Press the GREEN button to "Download Legal Packs" For the first visit you will be required to register simply with your email and a password.

Having set up your account you can download legal packs or if they are not yet available, they will automatically be sent to you when we receive them.

You will be automatically updated by email if any new information is added.

There will be a note added to the list to confirm AUCTION PACK NOW COMPLETE when no further information is due to be added.

*** STAY UPDATED *** By registering for the legal pack we can ensure you are kept updated on any changes to this Lot in the build up to the sale.

BUYER'S PREMIUM

Please be aware all purchasers are subject to a £1,500 + VAT (£1,800 inc VAT) buyer's premium which is ALWAYS payable upon exchange of contracts whether the sale is concluded before, during or after the auction date.

GUIDE PRICE

An indication of the seller's current minimum acceptable price at auction. The guide price or range of guide prices is given to assist consumers in deciding whether to pursue a purchase. It is usual, but not always the case, that a provisional reserve range is agreed between the seller and the auctioneer at the start of marketing. As the reserve is not fixed at this stage and can be adjusted by the seller at any time up to the day of the auction in the light of interest shown during the marketing period, a guide price is issued. This guide price can be shown in the form of a minimum and maximum price range within which an acceptable sale price (reserve) would fall, or as a single price figure within 10% of which the minimum acceptable price (reserve) would fall. A guide price is different to a reserve price (see separate definition). Both the guide price and the reserve price can be subject to change up to and including the day of the auction.

RESERVE PRICE

The seller's minimum acceptable price at auction and the figure below which the auctioneer cannot sell. The reserve price is not disclosed and remains confidential between the seller and the auctioneer. Both the guide price and the reserve price can be subject to change up to and including the day of the auction.

PRE AUCTION OFFERS

Some vendors are willing to consider offers prior to the auction. Pre auction offers can ONLY be submitted by completing the online PRE AUCTION OFFER FORM

The form can be found on the Hollis Morgan website on the individual auction property listing.

Please note offers will not be considered until you have inspected the COMPLETE LEGAL PACK once it has been released.

There will be a note added to the list to confirm AUCTION PACK NOW COMPLETE when our client's solicitor informs us no further information is due to be added.

In the event of an offer being accepted the property will only be removed from the online auction and viewings stopped once contracts have successfully EXCHANGED subject to the standard auction terms and payment of the buyer's premium (£1,800 Inclusive of VAT) to Hollis Morgan.

Contracts can be exchanged via the solicitors or at the Hollis Morgan offices by appointment only.

REGISTRATION PROCESS

The registration process is extremely simple – visit the Hollis Morgan auction website and click on the "Register to Bid" button.

The "Register to Bid" button can be found on the auction home page or on the individual lot listings.

Please note this function is not available on Rightmove or Zoopla.

Stage 1 – Complete the Online Bidding Form

Stage 2 – Upload your certified ID

Stage 3 – Invitation to bid

Stage 4 – Pay your security deposit (£6,800)

You are now ready to bid – Good luck!

If your bid is successful, the balance of the deposit monies must be transferred to our client account within 24 hours of the auction sale.

If you are unsuccessful at the auction your holding deposit will be returned within 48 hours.

SURVEYS AND VALUATIONS

If you would like to arrange a survey or mortgage valuation of this Lot BEFORE the auction, please instruct your appointed surveyor to contact Hollis Morgan and we will arrange access for them to inspect the property. Please note that buyers CANNOT attend the surveys and the surveyors are responsible for collecting and returning keys to the Hollis Morgan offices in Clifton.

AUCTION FINANCE & BRIDGING LOANS

Some properties may require specialist auction finance- please contact Hollis Morgan for access to expert advice and whole of market rates from our independent brokers.

Hollis Morgan may receive introductory fees for this service from the broker.

AUCTION BUYER'S GUIDE VIDEO

We have short video guides for both buying and selling by Public Auction on the Hollis Morgan Website. If you have any further questions regarding the process, please don't hesitate to contact Auction HQ.

2026 CHARITY OF THE YEAR

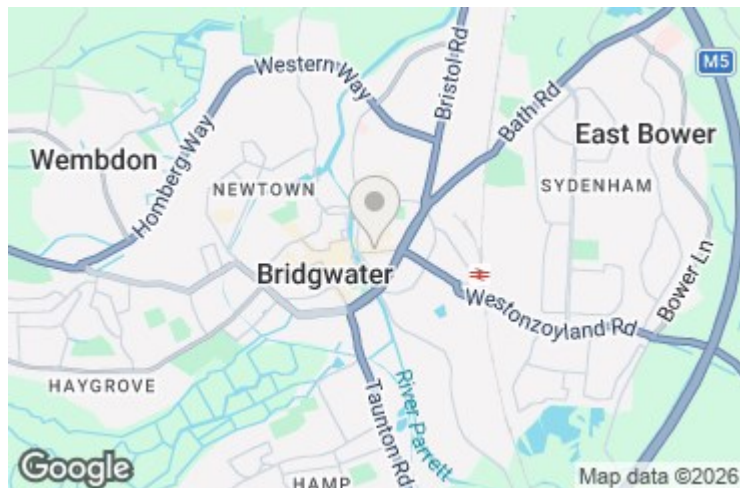
Hollis Morgan are proud to be supporting Bristol Schools Rugby Union as our 2026 Charity of the Year. BSRU (working in association with Bristol Bears) oversee and support rugby in all schools, State and Independent , in the Greater Bristol area. Bristol Schools provide School Rugby Development

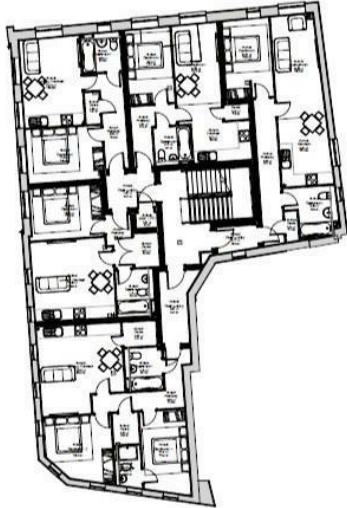
27 Eastover, Bridgwater, Somerset, TA6 5AW

opportunities and County level fixtures for secondary boys and girls. Including playing fixtures at U18s against the leading Independent Schools in our region, schools such as Clifton College, BGS, QEH, Collegiate and Millfield. For more information and details of the fixture list please follow them on Instagram.

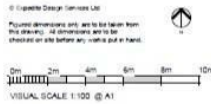
AUCTION PROPERTY DETAILS DISCLAIMER

Hollis Morgan endeavour to make our sales details clear, accurate and reliable in line with the Consumer Protection from Unfair Trading Regulations 2008 but they should not be relied on as statements or representations of fact, and they do not constitute any part of an offer or contract. All Hollis Morgan references to planning, tenants, boundaries, potential development, tenure etc is to be superseded by the information contained in the legal pack. It should not be assumed that this property has all the necessary Planning, Building Regulation, or other consents. Any services, appliances and heating system(s) listed have not been checked or tested. Please note that in some instances the photographs may have been taken using a wide-angle lens. The seller does not make any representation or give any warranty in relation to the property, and we have no authority to do so on behalf of the seller.

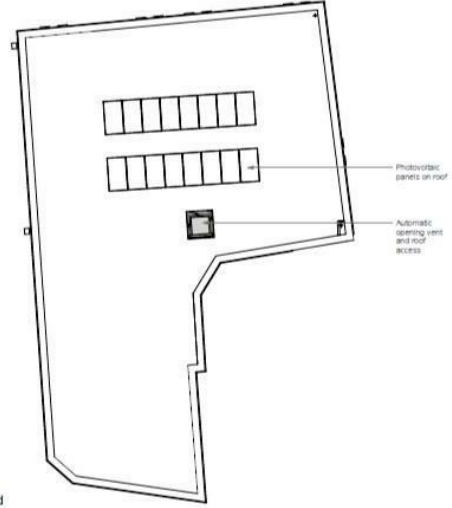




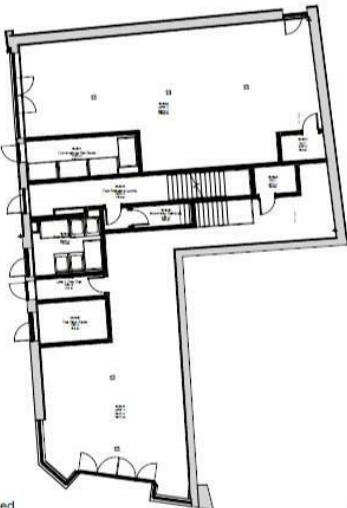
01-First floor Proposed
1:100



Commercial Units and Plots Schedule	
Class	Area
Unit 01	11.45 sqm
Unit 02	11.45 sqm
Unit 03	11.45 sqm
Unit 04	11.45 sqm
Unit 05	11.45 sqm
Unit 06	11.45 sqm
Unit 07	11.45 sqm
Unit 08	11.45 sqm
Unit 09	11.45 sqm
Unit 10	11.45 sqm
Unit 11	11.45 sqm
Unit 12	11.45 sqm
Unit 13	11.45 sqm
Unit 14	11.45 sqm
Unit 15	11.45 sqm
Unit 16	11.45 sqm
Unit 17	11.45 sqm
Unit 18	11.45 sqm
Unit 19	11.45 sqm
Unit 20	11.45 sqm
Unit 21	11.45 sqm
Unit 22	11.45 sqm
Unit 23	11.45 sqm
Unit 24	11.45 sqm
Unit 25	11.45 sqm
Unit 26	11.45 sqm
Unit 27	11.45 sqm
Unit 28	11.45 sqm
Unit 29	11.45 sqm
Unit 30	11.45 sqm
Unit 31	11.45 sqm
Unit 32	11.45 sqm
Unit 33	11.45 sqm
Unit 34	11.45 sqm
Unit 35	11.45 sqm
Unit 36	11.45 sqm
Unit 37	11.45 sqm
Unit 38	11.45 sqm
Unit 39	11.45 sqm
Unit 40	11.45 sqm
Unit 41	11.45 sqm
Unit 42	11.45 sqm
Unit 43	11.45 sqm
Unit 44	11.45 sqm
Unit 45	11.45 sqm
Unit 46	11.45 sqm
Unit 47	11.45 sqm
Unit 48	11.45 sqm
Unit 49	11.45 sqm
Unit 50	11.45 sqm
Unit 51	11.45 sqm
Unit 52	11.45 sqm
Unit 53	11.45 sqm
Unit 54	11.45 sqm
Unit 55	11.45 sqm
Unit 56	11.45 sqm
Unit 57	11.45 sqm
Unit 58	11.45 sqm
Unit 59	11.45 sqm
Unit 60	11.45 sqm
Unit 61	11.45 sqm
Unit 62	11.45 sqm
Unit 63	11.45 sqm
Unit 64	11.45 sqm
Unit 65	11.45 sqm
Unit 66	11.45 sqm
Unit 67	11.45 sqm
Unit 68	11.45 sqm
Unit 69	11.45 sqm
Unit 70	11.45 sqm
Unit 71	11.45 sqm
Unit 72	11.45 sqm
Unit 73	11.45 sqm
Unit 74	11.45 sqm
Unit 75	11.45 sqm
Unit 76	11.45 sqm
Unit 77	11.45 sqm
Unit 78	11.45 sqm
Unit 79	11.45 sqm
Unit 80	11.45 sqm
Unit 81	11.45 sqm
Unit 82	11.45 sqm
Unit 83	11.45 sqm
Unit 84	11.45 sqm
Unit 85	11.45 sqm
Unit 86	11.45 sqm
Unit 87	11.45 sqm
Unit 88	11.45 sqm
Unit 89	11.45 sqm
Unit 90	11.45 sqm
Unit 91	11.45 sqm
Unit 92	11.45 sqm
Unit 93	11.45 sqm
Unit 94	11.45 sqm
Unit 95	11.45 sqm
Unit 96	11.45 sqm
Unit 97	11.45 sqm
Unit 98	11.45 sqm
Unit 99	11.45 sqm
Unit 100	11.45 sqm



03-Roof Level Proposed
1:100



00-Ground Floor Proposed
1:100

Refer to site plan for external works.



02-Second Floor Proposed
1:100