

5, 1 Woodbine Place, Oxford, OX1 1JS

Property Type: Studio apartment available for the 2026/27 academic year.

Location: Woodbine Place, just a short walk from Oxford train station and the City Centre.

Key Features:

Occupancy: Available to students only and suitable for single occupancy.

Kitchen: Access to a large, brand new high-specification shared kitchen.

Bathroom: Modern bathroom suite.

Outdoor Space: Rear courtyard garden ideal for relaxing or studying outdoors.

Storage: Secure bike storage available.

Transport Links: Approximately two minutes' walk from the train station with excellent access across Oxford and beyond.

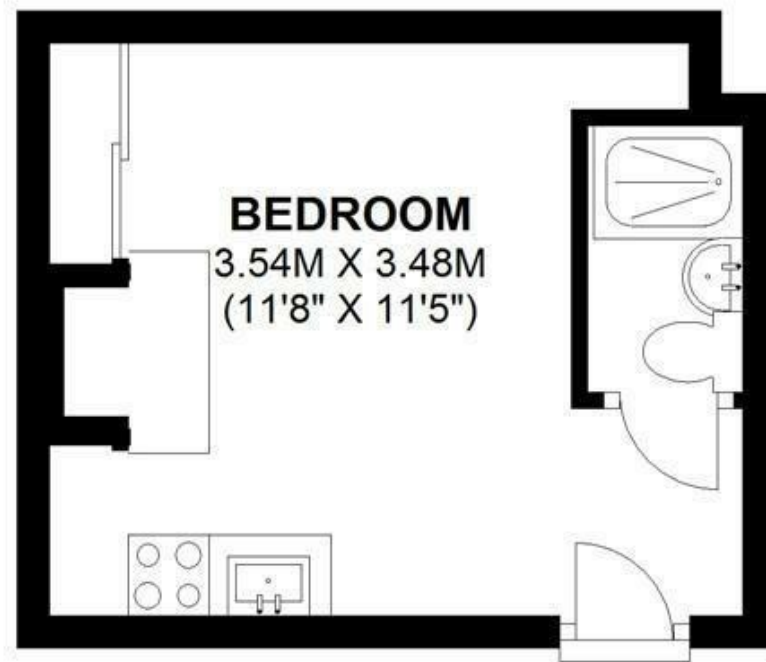
- Oxford City Centre
- 1 Bedroom
- 1 Bathroom
- Furnished Property

This charming studio apartment in the desirable Woodbine Place development offers comfortable and convenient student accommodation for the 2026/27 academic year. The property benefits from a bright living and sleeping space, modern bathroom, and access to a newly fitted high-specification communal kitchen, perfect for cooking and

£1,075 Per Month

GROUND FLOOR

APPROX. 15.4 SQ. METRES (165.8 SQ. FEET)



TOTAL AREA: APPROX. 15.4 SQ. METRES (165.8 SQ. FEET)

Energy Efficiency Rating		Current	Potential
Very energy efficient - lower running costs			
(92 plus) A			
(81-91) B			
(69-80) C			
(55-68) D			
(39-54) E			
(21-38) F			
(1-20) G			
Not energy efficient - higher running costs			
		66	74
England & Wales		EU Directive 2002/91/EC	

Environmental Impact (CO ₂) Rating		Current	Potential
Very environmentally friendly - lower CO ₂ emissions			
(92 plus) A			
(81-91) B			
(69-80) C			
(55-68) D			
(39-54) E			
(21-38) F			
(1-20) G			
Not environmentally friendly - higher CO ₂ emissions			
		49	51
England & Wales		EU Directive 2002/91/EC	