



Broad Lane | Heswall | Wirral | CH60 9LE

£3,500 Per Month

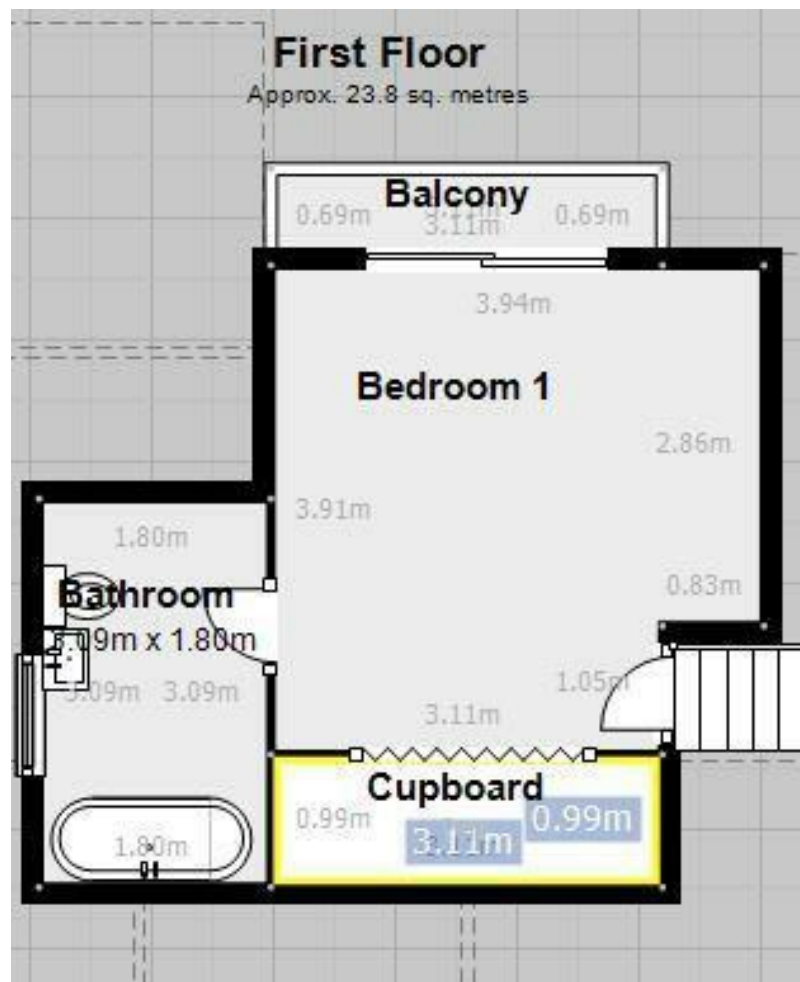


Broad Lane | Heswall
Wirral | CH60 9LE
£3,500 Per Month

Nestled in the charming area of Broad Lane, Heswall, this delightful house offers a perfect blend of comfort and leisure. Spanning an impressive 1,173 square feet, the property boasts two spacious reception rooms, ideal for both relaxation and entertaining guests. With three well-appointed bedrooms, there is ample space for families or those seeking a home office.

The house features two modern bathrooms, ensuring convenience for all residents. It combines classic design with contemporary living, making it a wonderful place to call home. For those with vehicles, the property provides parking for two cars, adding to the ease of daily life.

- AVAILABLE IMMEDIATELY !!!!!
- 2 modern bathrooms
- 2 cosy reception rooms
- Fully equipped Gym
- 1,173 sq ft of space
- Located in Heswall, Wirral
- Close to local amenities
- Within walking distance to beach
- Viewing recommended
- 2 Man sauna



Energy Efficiency Rating		Current	Potential
<i>Very energy efficient - lower running costs</i>			
(92 plus)	A		
(81-91)	B		
(69-80)	C		
(55-68)	D	62	
(39-54)	E		
(21-38)	F		
(1-20)	G		
<i>Not energy efficient - higher running costs</i>			
England & Wales		EU Directive 2002/91/EC	

Council Tax Band D
EPC Rating D

14 Park Brow Drive
Kirkby
Merseyside
L32 6QP
0151 289 8585
jodie@dorankennedy.co.uk