



29 Hockham Street, King's Lynn PE30 5LZ

£120,000

2 1 1

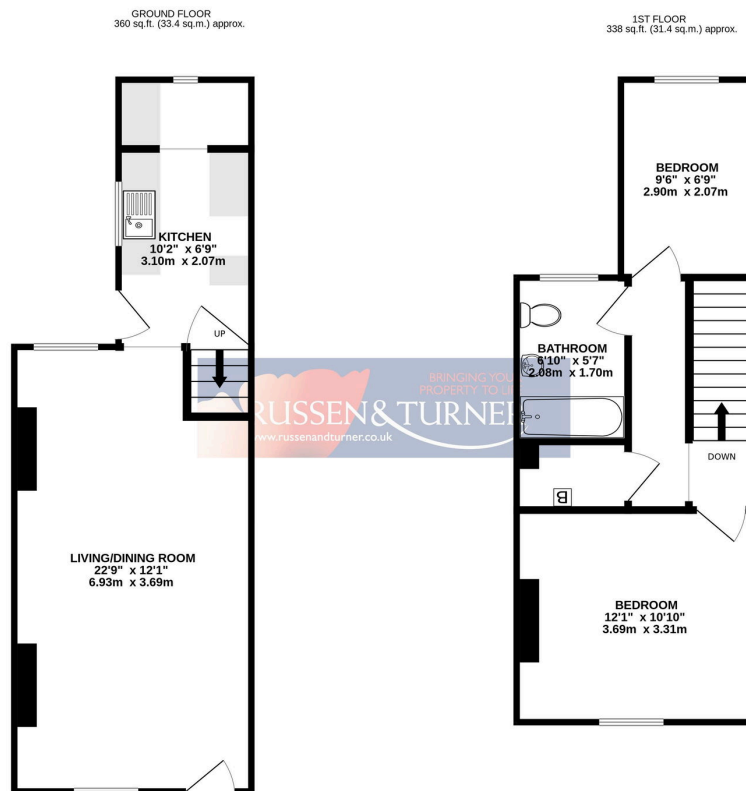


Ideally located just a short walk from both the town centre and the train station, this two-bedroom mid-terraced home is packed with potential and ready for you to make your mark. Offered to the market with no onward chain, it features bright, airy accommodation, a private courtyard garden, and gas central heating—making it an excellent first home or a smart investment opportunity.



Key Features

- Mid Terraced House
- No Onward Chain
- Gas Central Heating
- Ideal First Home
- Potential Investment Opportunity
- Two Bedrooms
- Close to Town Centre - Walking Distance
- Courtyard Garden
- Blank Canvas for you to make your own
- Generous 22ft Living/Dining Room



TOTAL FLOOR AREA - 698 sq.ft. (64.8 sq.m.) approx.
Whilst every attempt has been made to ensure the accuracy of the floorplan contained here, measurements of doors, windows, rooms and any other items are approximate and no responsibility is taken for any error, omission or mis-statement. This plan is for illustrative purposes only and should be used as such by any prospective purchaser. The services, systems and appliances shown have not been tested and no guarantee as to their operability or efficiency can be given.
Made with Metropix ©2025

