



## Fairholme Road, W14

£2,850 Per calendar month

This two bedroom apartment offers equal size bedrooms, a spacious open plan living space and private garden to the rear. The property is ideal for professionals or a couple who are looking for additional space.

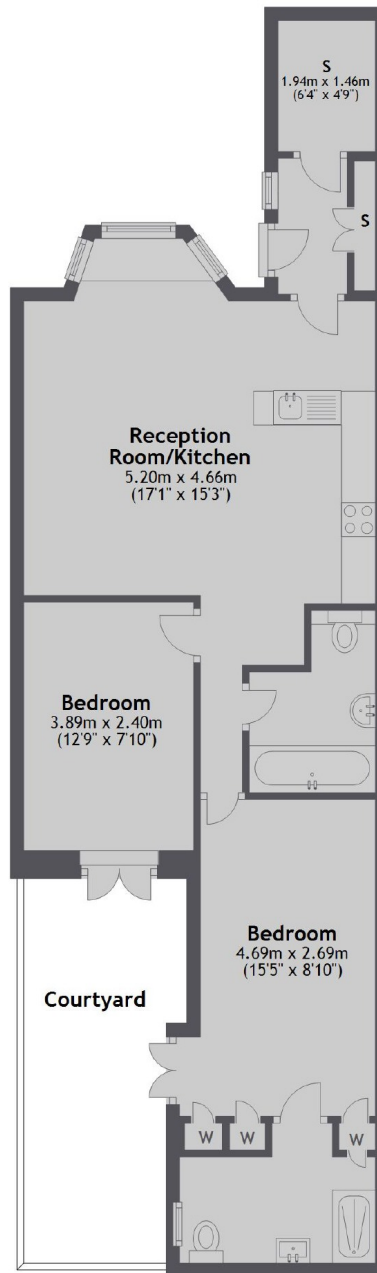
Fairholme Road is a highly sought after street, situated within close proximity to a variety of local shops and amenities. The Property is within close proximity to the A4 and walking distance from both West Kensington and Barons Court tube stations.

### Features

- Two Bedroom
- Two Bathroom
- Furnished
- Private Entrance
- Private Gardens
- Open Plan Living

Fairholme Road,  
London, W14

Lower Ground Floor



Total area: approx. 67.2 sq. metres (723.0 sq. feet)